

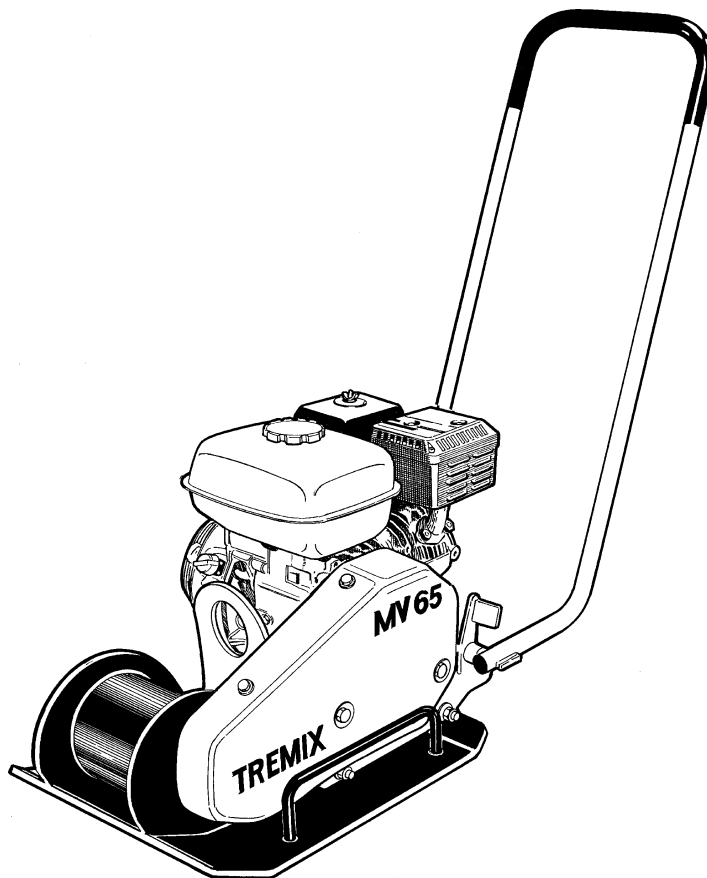
TREMIX

Soil compactor

MV 65

SPARE PARTS CATALOGUE

SMV065-1EN1



TREMIX®

Metso Construction Equipment AB
Stensättravägen 9, Box226
SE- 127 24 Skärholmen, Sweden
Tel: +46 8 603 32 00 Telefax: +46 8 646 72 61

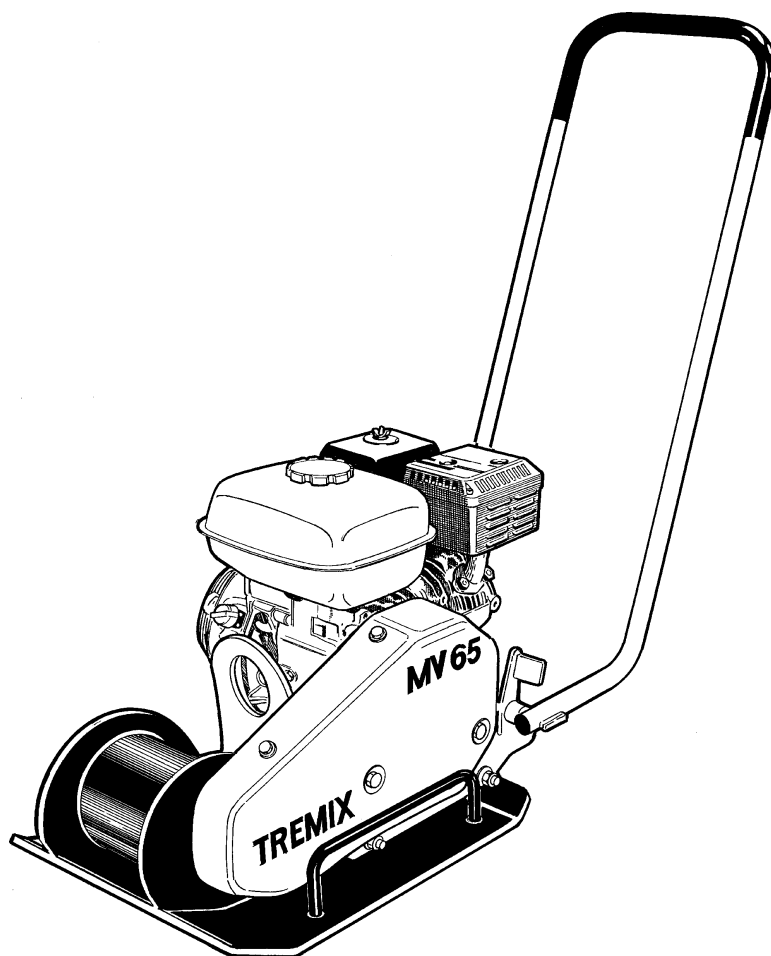
**Soil compactor
MV 65
Spare Parts Catalogue
SMV065 -1EN1**

Engines:

Honda GX120

Published catalogue issues valid for these compactors:

<i>Catalogue</i>	<i>Issue date</i>
<i>SMV065-1EN1</i>	<i>2002-02</i>



RESERVDLSBESTÄLLNING

Följande uppgifter ska lämnas vid beställning av reservdelar för att undvika leveransfel:

1. Maskintyp.
2. Vältensserienummer.
3. Antal av önskad reservdel.
4. Reserdelens artikelnummer.
5. Reservdelens benämning.
6. Måttuppgifter vid beställning av metervara.

ERSATZTEILBESTELLUNG

Zur Vermeidung von Fehllieferungen sind bei der Bestellung von Ersatzteilen folgende Angaben zu machen:

1. Maschinentyp.
2. Herstellungsnummer.
3. Bestellmenge. (Quantity)
4. Ersatzteilnummer. (Part N^o)
5. Ersatzteilbenennung. (Denomination)
6. Massangaben bei Bestellung von Meterware.

PEDIDO DE RECAMBIOS

Para evitar errores en las entregas, deberán indicarse los siguientes datos al hacer un pedido de recambios:

1. Tipo de máquina.
2. Número de serie.
3. Cantidad de piezas deseadas. (Quantity)
4. Número de artículo de la pieza de recambio. (Part N^o)
5. Denominación de la pieza. (Denomination)
6. Indíquese la medida al solicitar un artículo que se expide por metros.

ORDERING SPARE PARTS

To avoid errors in delivery, please give the following information when ordering spare parts:

1. Type of machine.
2. Roller serial number.
3. Quantity required.
4. Part number.
5. Parts denomination.
6. Dimensions when ordering per length.

ORDINI DI RICAMBI

Per evitare errori nelle consegne di ricambi, Vi preghiamo di comunicarci le seguenti informazioni al momento dell'ordinazione:

1. Tipo di macchina.
2. Numero di serie della macchina.
3. Quantità dei pezzi desiderati. (Quantity)
4. Numero di codice del pezzo. (Part N^o)
5. Descrizione del pezzo di ricambio. (Denomination)
6. Misura, in caso di ordine per metro.

COMMANDE DE PIÈCES DE RECHANGE

Les indications suivantes doivent être fournies lors de la commande de pièces de rechange, afin d'éviter toute erreur de livraison:

1. Type de machine.
2. Numéro de série.
3. Quantité désirée de pièce de rechange. (Quantity)
4. Numéro de la pièce de rechange. (Part N^o)
5. Dénomination de la pièce de rechange. (Denomination)
6. Longueur en cas de commande au mètre.

YOUR AGENT/DEALER:

PÄRMETIKETT

För att undvika fel vid reservdelsbeställning finns här nedan två etiketter som passar i fickorna på pärmarnas ryggar. På dessa kan man se från vilket vältnummer av aktuell maskin reservdelskatalogen gäller. Gör så här:

1. Tag denna sida ur pärmen.
2. Klipp ut etiketten till VÄNSTER (1) och sätt in den i fickan på DENNA pärmens rygg.
3. Finns det en etikett till HÖGER (2), kan denna användas på pärmen för FÖREGÅENDE utgåva av denna katalog.
4. Kasta detta papper.

KATALOG-BESCHRIFTUNG

Zur Vermeidung von Fehlen bei der Ersatzteilbestellung benutzen Sie bitte die unteren Beschriftungen, um die Kataloge auf der Rückseite zu kennzeichnen. Auf der Beschriftung ist angegeben, für welche Maschinennummern der jeweilige Katalog gültig ist. Ablauf:

1. Nehmen Sie dieses Blatt aus dem Katalog.
2. Schneiden Sie die LINKE Beschriftung (1) aus. Schieben Sie die Beschriftung in die tasche auf DEM Katalogrücke.
3. Sollte die Beschriftung unten RECHTS (2) mitgeliefert werden, kennzeichnen Sie damit bitte die ÄLTERE Ausführung dieses Kataloges.
4. Den Rest dieses Blattes bitte vernichten.

ETIQUETA PARA LA CARPETA

Para evitar errores al pedir repuestos utilicen las etiquetas abajo descritas para identificar los catálogos en la parte trasera de la carpeta. En la etiqueta se ven los números de referencia de la serie para la cual es válido el catálogo. Instrucciones:

1. Quitar esta página de la carpeta.
2. Corta la etiqueta IZQUIERDA (1) y ponerla en la parte trasera de la carpeta.
3. Si hay una etiqueta en la parte DERECHA (2) se puede utilizar en la carpeta para el catálogo que PRECEDE a esta.
4. Tirar esta hoja.

BINDER LABEL

To avoid errors when ordering spare parts use the labels below to identify the catalogues on the back of the binder. The label contain the serial number range for which the catalogue is valid. Do like this:

1. Remove this page from the binder.
2. Cut out the LEFT label (1) and put it on THIS binders back.
3. If there is a label to the RIGHT (2), it can be used on the binder for PRECEDING issue of this catalogue.
4. Throw away this paper.

ETICHETTA POSTA SUL RACCOGLITORE

Per evitare errori quando ordinate pezzi di ricambio, usate le etichette in calce che servono ad identificare i cataloghi sul retro del raccoglitore. L'etichetta indica il numero di matricola delle macchine prese in considerazione nel catalogo.

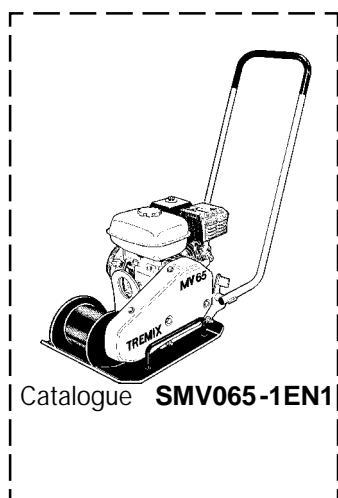
1. Rimuovete questa pagina dal raccoglitore.
2. Ritagliate l'etichetta posta a SINISTRA (1) e ponetela sul retro DEL raccoglitore.
3. Se trovate anche un'etichetta sulla DESTRA (2), ritagliatela e ponetela sul raccoglitore relativo alla PRECEDENTE edizione del catalogo.
4. Distruggete questo foglio.

ETIQUETAGE DU CATALOGUE

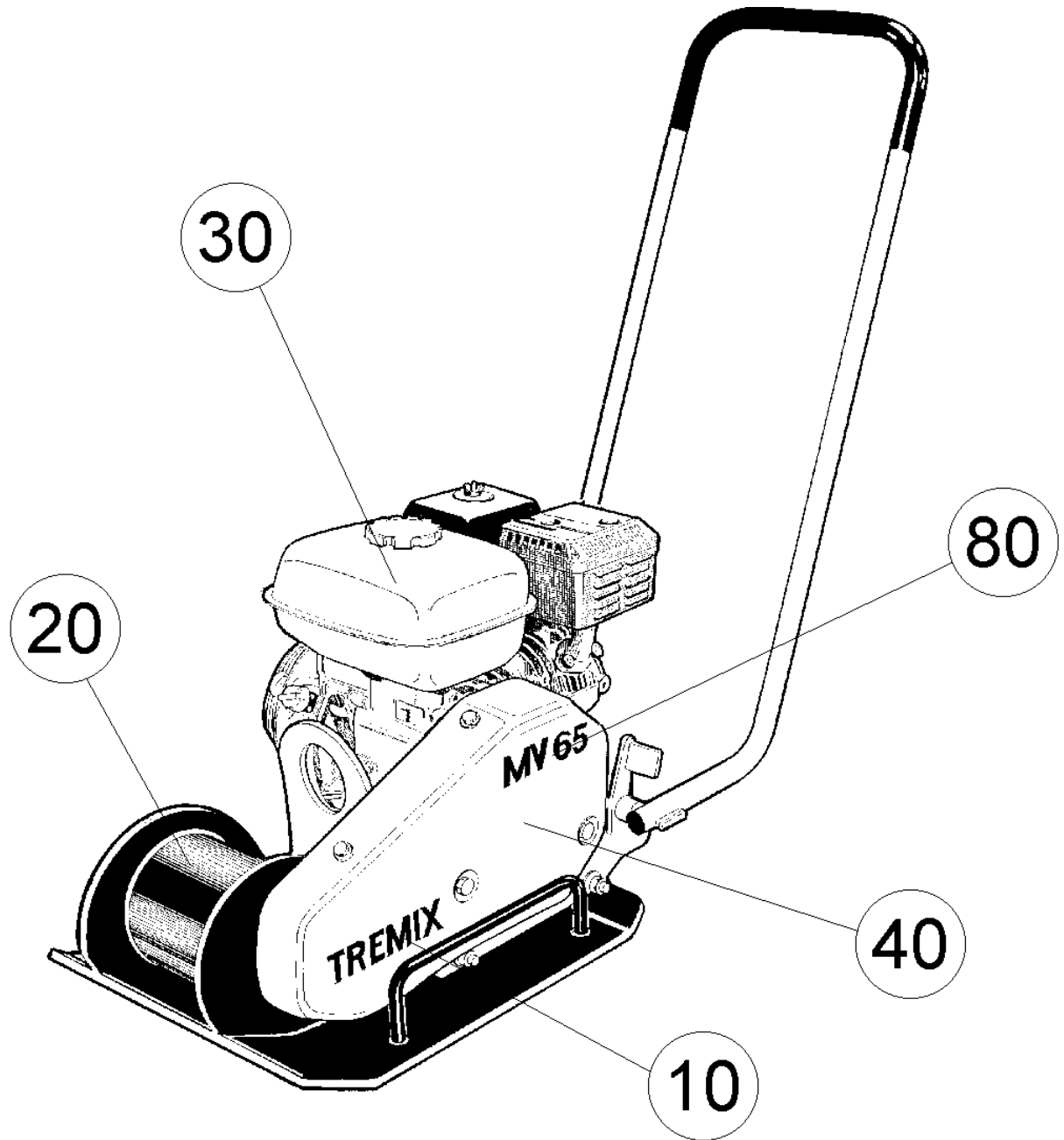
Afin d'éviter des erreurs lors de commandes de pièces de rechange, nous vous conseillons d'apposer les marquages ci-dessous à l'arrière du classeur, pour identifier les catalogues. Ce marquage indique les numéros de série pour lesquels le catalogue est adapté. Il convient de procéder de la façon suivante:

1. Retirez cette page du classeur.
2. Découpez l'étiquette de GAUCHE (1), et apposez-la à l'arrière de CE catalogue.
3. Si il y a une étiquette à DROITE (2), vous pourrez l'apposer sur le classeur de l'edition PRECEDENTE du catalogue.
4. Détruire cette feuille.

1.



MV65	2
Ground plate and engine plate	4
Ground plate and engine plate	6
Sprinkler system	8
Option, transport device	10
Eccentric element	12
Eccentric element	14
Engine	16
Engine Honda GX120 K1SX	18
Transmission	20
Power transmission	22
Decals and documenttion	24
Decals and documentation	26



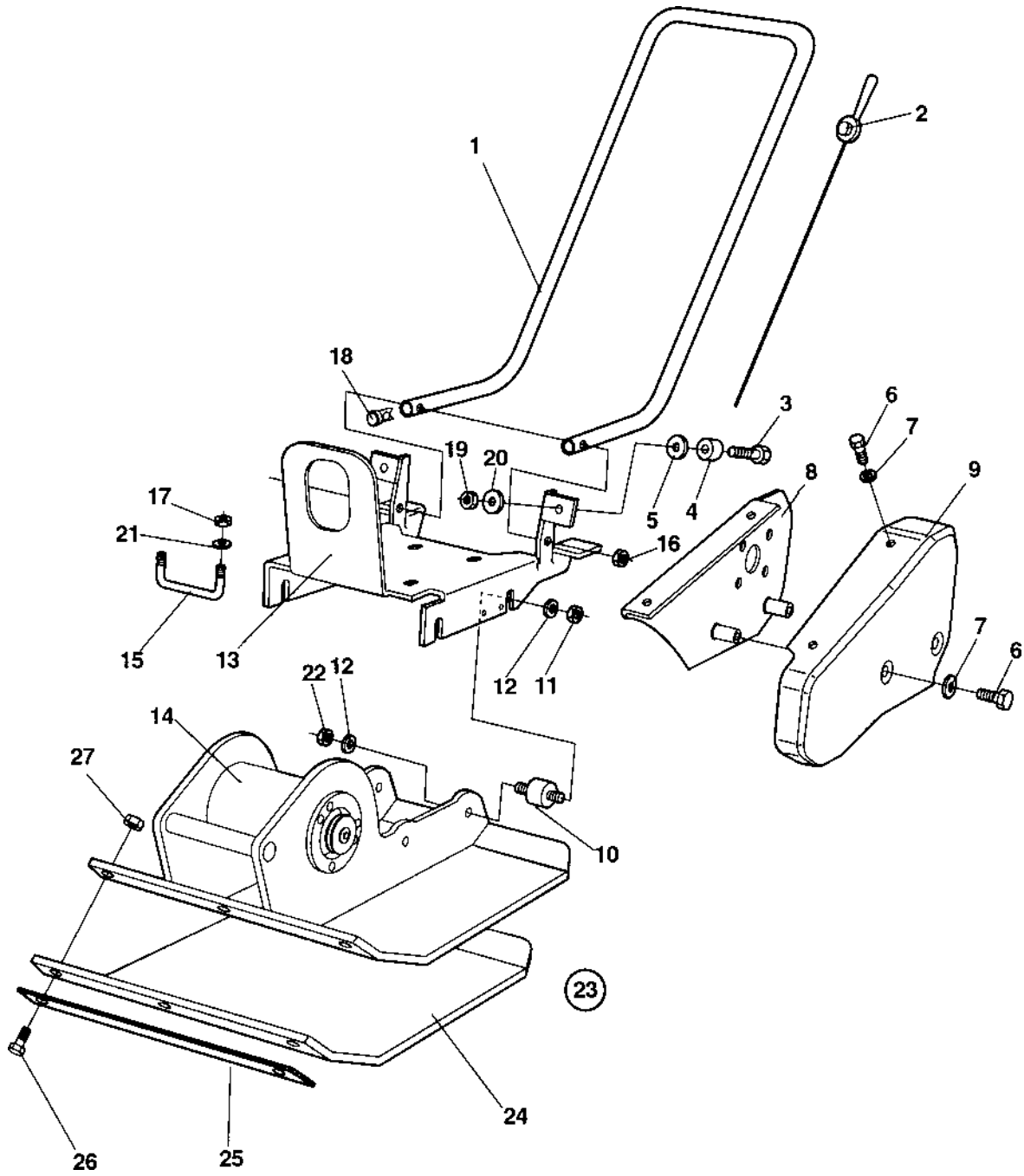
Ref. No.	Part No.	Rem.	Qty	Description	Code
10				Ground plate and engine plate (Page 4)	
20				Eccentric element (Page 12)	
30				Engine (Page 16)	
40				Transmission (Page 20)	
80				Decals and documenttion (Page 24)	



Ground plate and engine plate

Ground plate and engine plate

Ref. No.	Part No.	Rem.	Qty	Description	Code
10				Ground plate and engine plate (Page 6)	
20				Sprinkler system (Page 8)	
30				Option, transport device (Page 10)	



Ground plate and engine plate

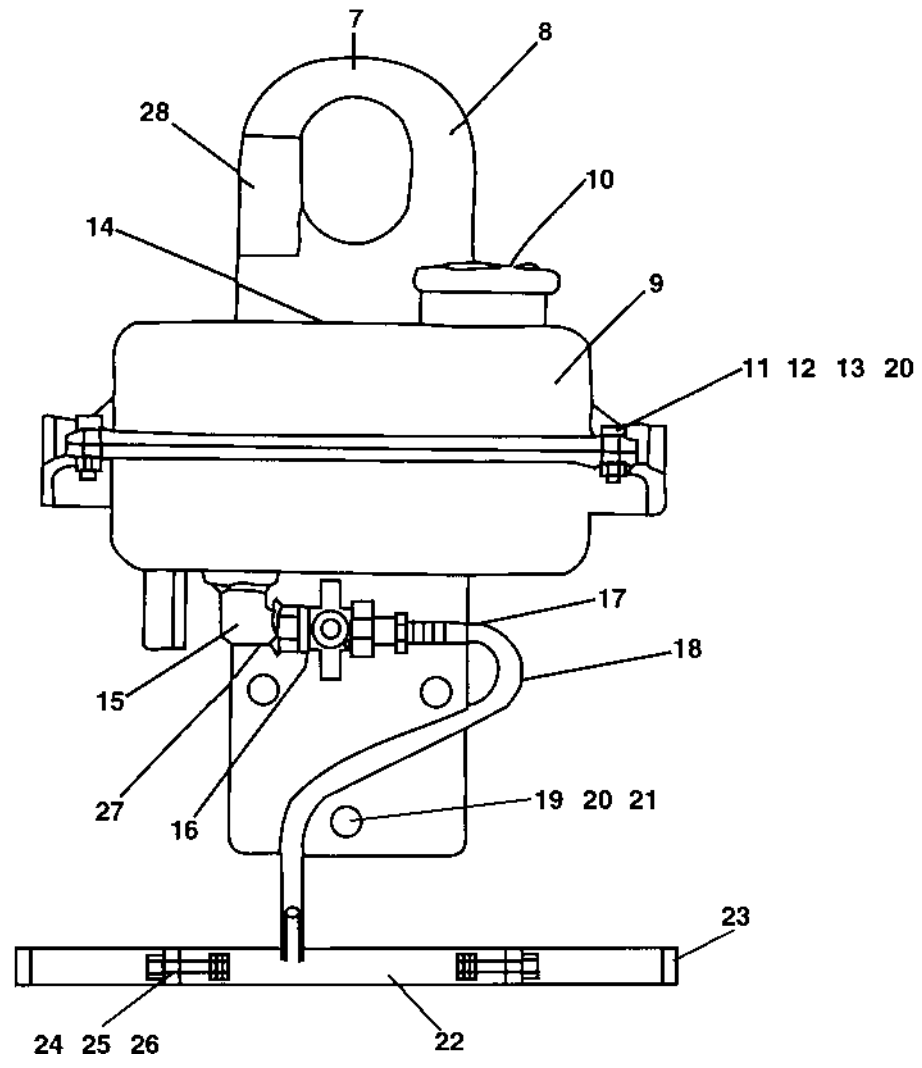
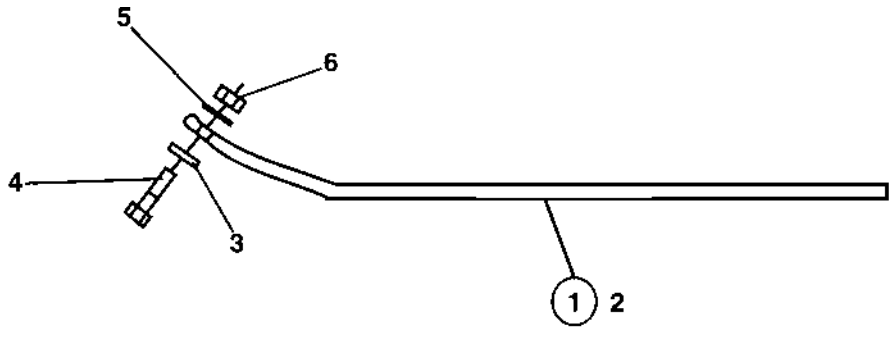
Ref. No.	Part No.	Rem.	Qty	Description	Code
1	282541		1	Handle	
2			1	Not used on this model	
3	508012		2	Screw	
4	282561		2	Spacer	
5	904567		2	Washer 10,5x28x6	
6	500019		4	Screw M8-1,25x16 8,8	
7	904229		4	Washer 8,4x16x1,5	
8	282543		1	Belt guard, inner	
9	282544-10		1	V-belt guard	
10	282547		4	Shock absorber	
11	586018		4	Lock nut M10	
12	904230		8	Washer 10,5x22x2	
13	282545-10		1	Engine plate	
14		A	1	Ground plate	
15	282078		2	Governor yoke	
16	282516		2	Bushing	
17	586003		4	.Lock nut M8	
18	282079		2	Bushing	
19	586002		2	Lock nut M6	
20	904228		2	Washer 6,4x12x1,5	
21	904640		4	Washer 8.4x22x3	
22	791172		4	Nut	
23		B	1	Polyurethane plate, cpl	
24	282552		1	.Polyurethane plate	
25	282553	D	1	.Bracket	
	381953	C	1	.Bracket	
26	904341		3	.Screw	
	500003	D	3	.Screw	
27	902287		3	.Nut	

A) See section eccentric element

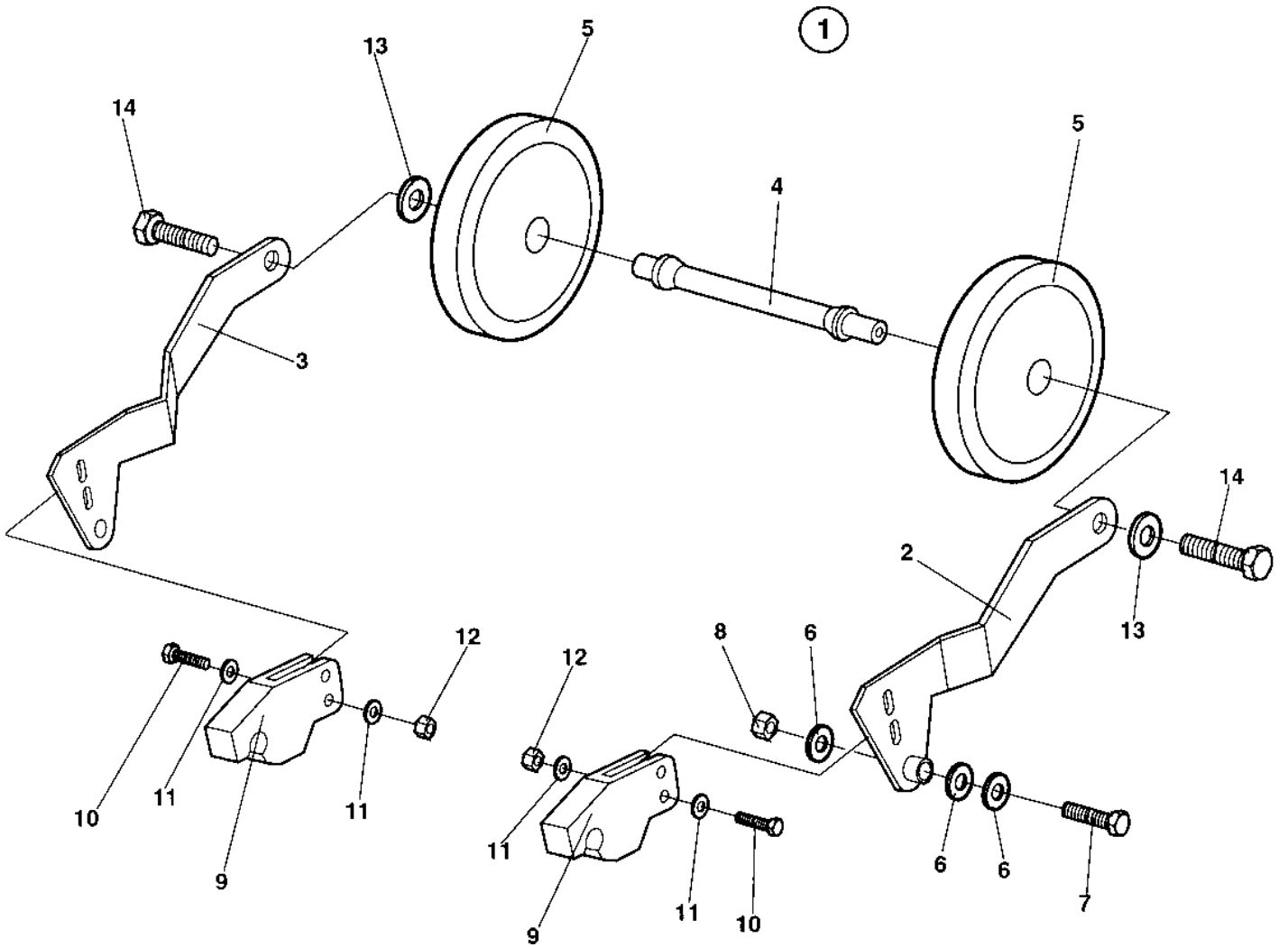
B) Option

C) New version, interchangeable together with screw 904341

D) Old version



Ref. No.	Part No.	Rem.	Qty	Description	Code
1	282551		1	Polyurethane plate, cpl	
2	282552		1	Polyurethane plate	
3	282553		1	Bracket	
4	500031		3	Screw M10-1,5x40 8,8	
5	570006		3	Nut M10	
6	615044		3	Conical spring washer	D
7	282556		1	Sprinkler system	
8	282558		1	Bracket	
9	283685		1	Tank, cpl	
10	239823		1	Filler cap	
11	500022		2	Screw M8-1,25x30 8,8	
12	600006		2	Washer	
13	586003		2	Lock nut M8	
14	271419		1	Decal "WATER"	
15	282569		1	Connector	
16	282570		1	Ball valve	
17	901650		1	Nipple	
18	902160		1	Plastic hose	
19	500021		3	Screw M8-1,25x25 8,8	
20	615043		5	Conical spring washer 8,4x18x2	
21	586003		3	Lock nut M8	
22	282566		1	Sprinkler tube	
23	287370		2	Plug	
24	500075		4	Screw	
25	600004		8	Washer	
26	586002		4	Lock nut M6	
27	232150		1	Nut	
28	281269		1	Decal "LIFT"	

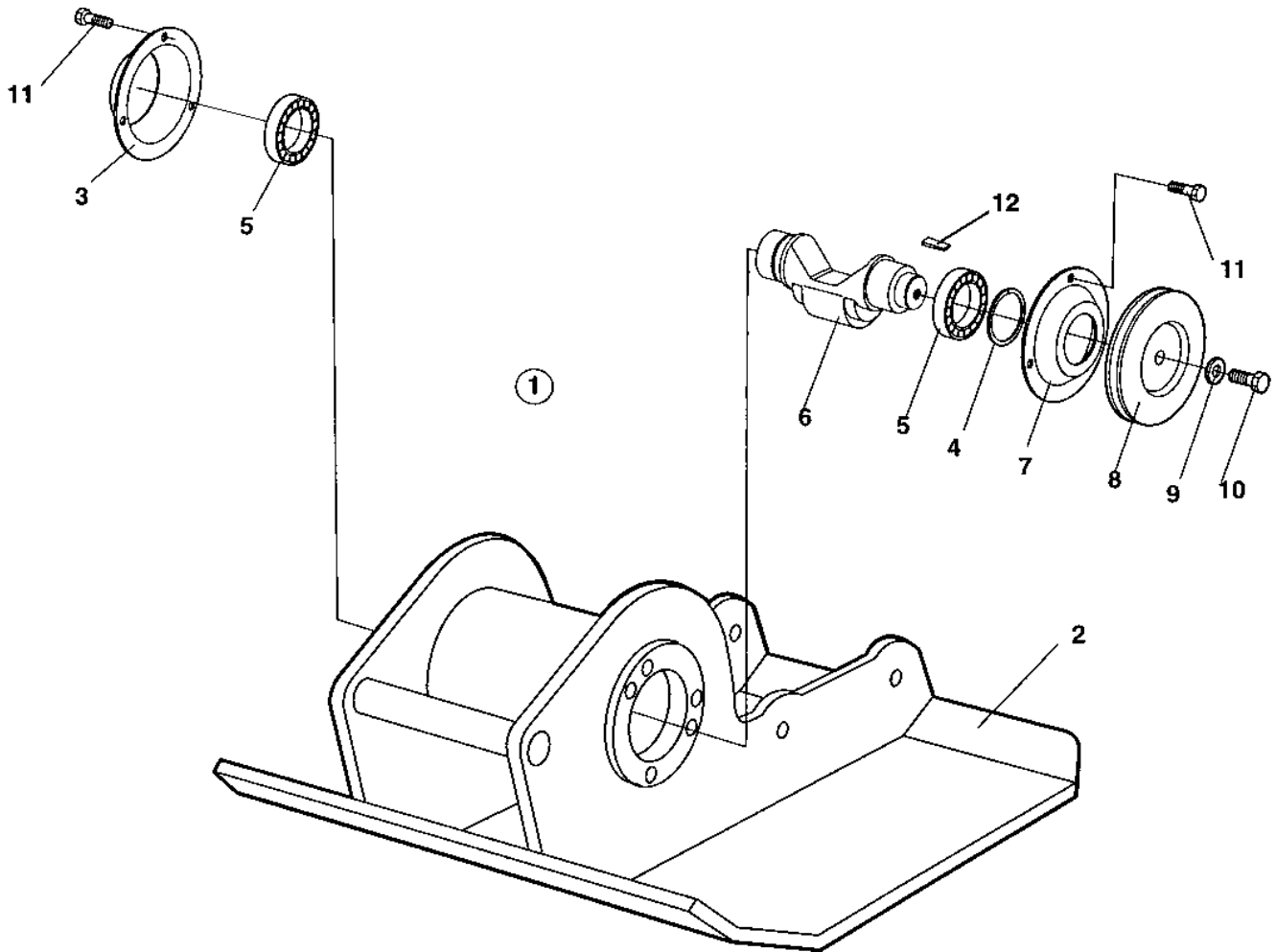


Option, transport device

Ref. No.	Part No.	Rem.	Qty	Description	Code
1			1	Transport device, cpl	
2	383578		1	.Arm left	
3	383583		1	.Arm right	
4	384812		1	.Shaft	
5	383582		2	.Wheel	
6	904230		6	.Washer 10,5x22x2	
7	500161		2	.Screw	
8	586018		2	.Lock nut M10	
9	383584		2	.Clip	
10	500087		4	.Screw	
11	904281		8	.Washer	
12	586001		4	.Lock nut M5	
13	904229		2	.Washer 8,4x16x1,5	
14	500021		2	.Screw M8-1,25x25 8,8	

Ref. No.	Part No.	Rem.	Qty	Description	Code
10				Eccentric element (Page 14)	

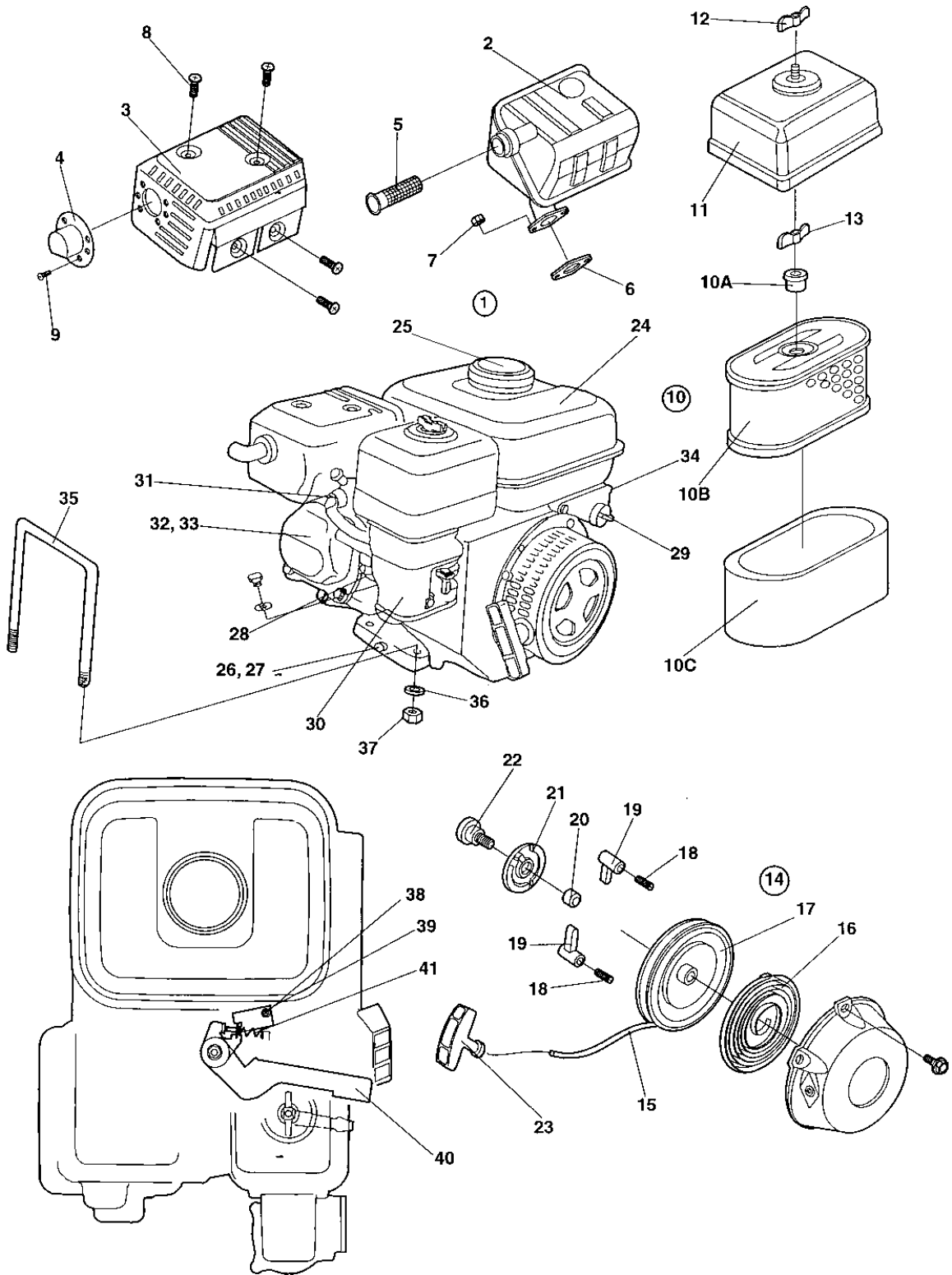
TREMIX®
Eccentric element
17412



Ref. No.	Part No.	Rem.	Qty	Description	Code
1			1	Ground plate with eccentric element	
2	383902		1	.Ground plate, cpl	
3	282536		1	.Cover	
4	167041		1	.Sealing	D
5	903639		2	.Bearing	
6	282538		1	.Eccentric shaft	
7	282537		1	.Cover	
8	280064		1	.V-belt pulley	
9	901688		1	.Washer	
10	500053		1	.Screw M8-1,25x20 8,8	
11	902989		6	.Screw	
12	350028		1	Key	

Engine

Ref. No.	Part No.	Rem.	Qty	Description	Code
10				Engine Robin EY15 D	
20				Engine Honda GX120 K1SX (Page 18)	

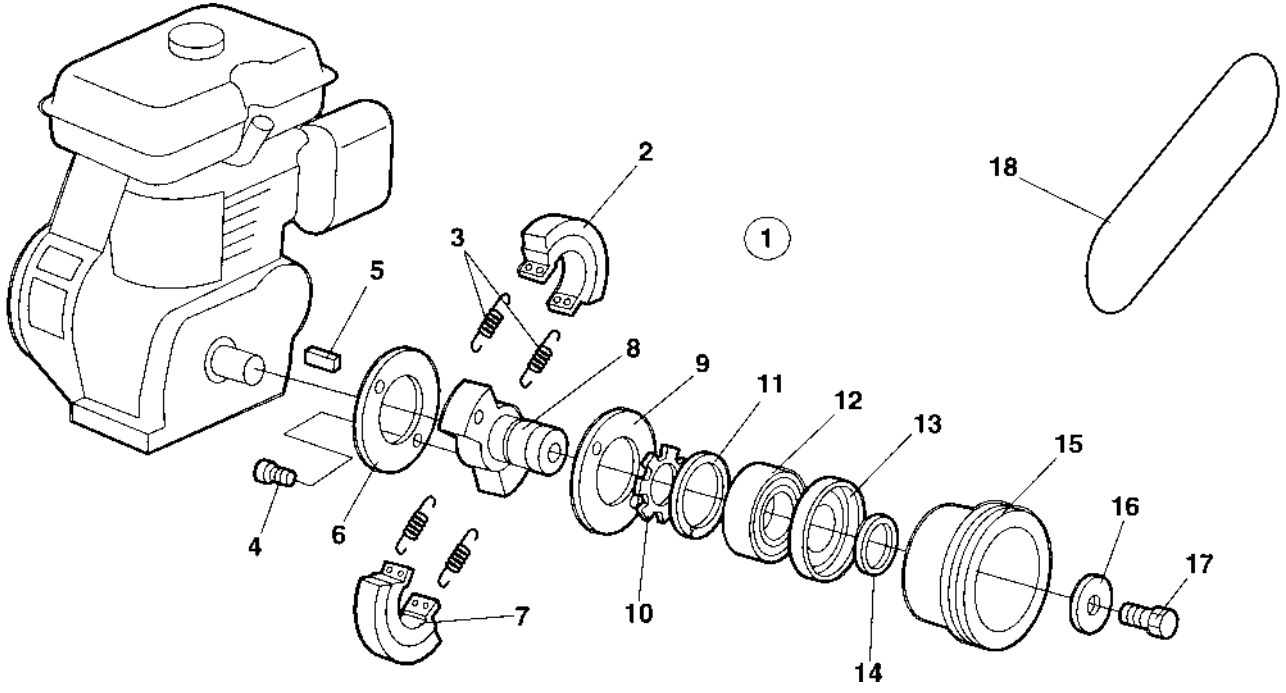


Ref. No.	Part No.	Rem.	Qty	Description	Code
1			1	Engine	
2	383031	A,B	1	Catalyser	
	239059		1	.Muffler	
3	239060		1	.Muffler cover, upper	
4	239062		1	.Exhaust pipe	
5	238322		1	.Arrester, spark	
6	239063		1	.Gasket, muffler	
7	570005		2	.Nut M8	
8	533023		4	.Screw	
9	100900105		1	.Screw	
10	239064		1	.Air cleaner element, cpl	A
10-A	239772		1	..Grommet	
10-B			1	..Air filter	
10-C	938229		1	..Air filter, outer	
11	239685		1	.Cover	
12	238314		1	.Nut	
13	239771		1	.Nut	
14	239065		1	.Recoil starter, cpl	D
15	239374		1	..Starter rope	B
16	239375		1	..Spring	B
17	239376		1	..Reel	
18	239377		1	..Spring	
19	239378		2	..Ratchet	
20	239379		2	..Friction spring	
21	239380		1	..Guide	
22	239381		1	..Screw	
23	239391		1	..Handle	B
24	239066		1	.Fuel tank	
25	239324		1	..Fuel tank cap	D
26	239682		2	.Plug	D
27	238303		2	.Gasket	D
28	238306		1	.Oil plug	D
29	238298		1	.Stop button	
30	239061		1	.Carburettor	
31	924842		1	.Spark plug	
32	238301		1	.Gasket	D
33	239854		1	.Gasket	D
34	239680		1	.Oil alert sensor	
35	282078		2	Governor yoke	
36	904229		4	Washer 8,4x16x1,5	
37	586003		4	Lock nut M8	
38	382111		1	Lock washer	
39	508073		1	Screw	
40	382714		1	Throttle control arm	
41	282371		1	Spring	

A) Option

B) Replacable with muffler

Ref. No.	Part No.	Rem.	Qty	Description	Code
10				Power transmission (Page 22)	



Ref. No.	Part No.	Rem.	Qty	Description	Code
1	282191		1	Centrifugal clutch, cpl	
2	928379		1	.Clutch lining	B
3	912498	B	2	.Spring	D
	912481	C	2	.Spring	B
4	535002		2	.Screw	
5			1	Key	
6	912480		1	.Cover	
7	912477		1	.Centrifugal weight	D
8	239855		1	.Hub	
9	239857		1	.Cover	
10	239539		1	.Retaining ring	
11	151023		2	.Retaining ring	
12	111178		1	.Ball bearing	D
13	134056		1	.Sealing ring	
14	150015		2	.Snap ring	
15	938076		1	.V-belt pulley	
16	904734		1	Washer 8,4x26x4	
17	500053		1	Screw M8-1,25x20 8,8	
18	282562		1	V-belt	

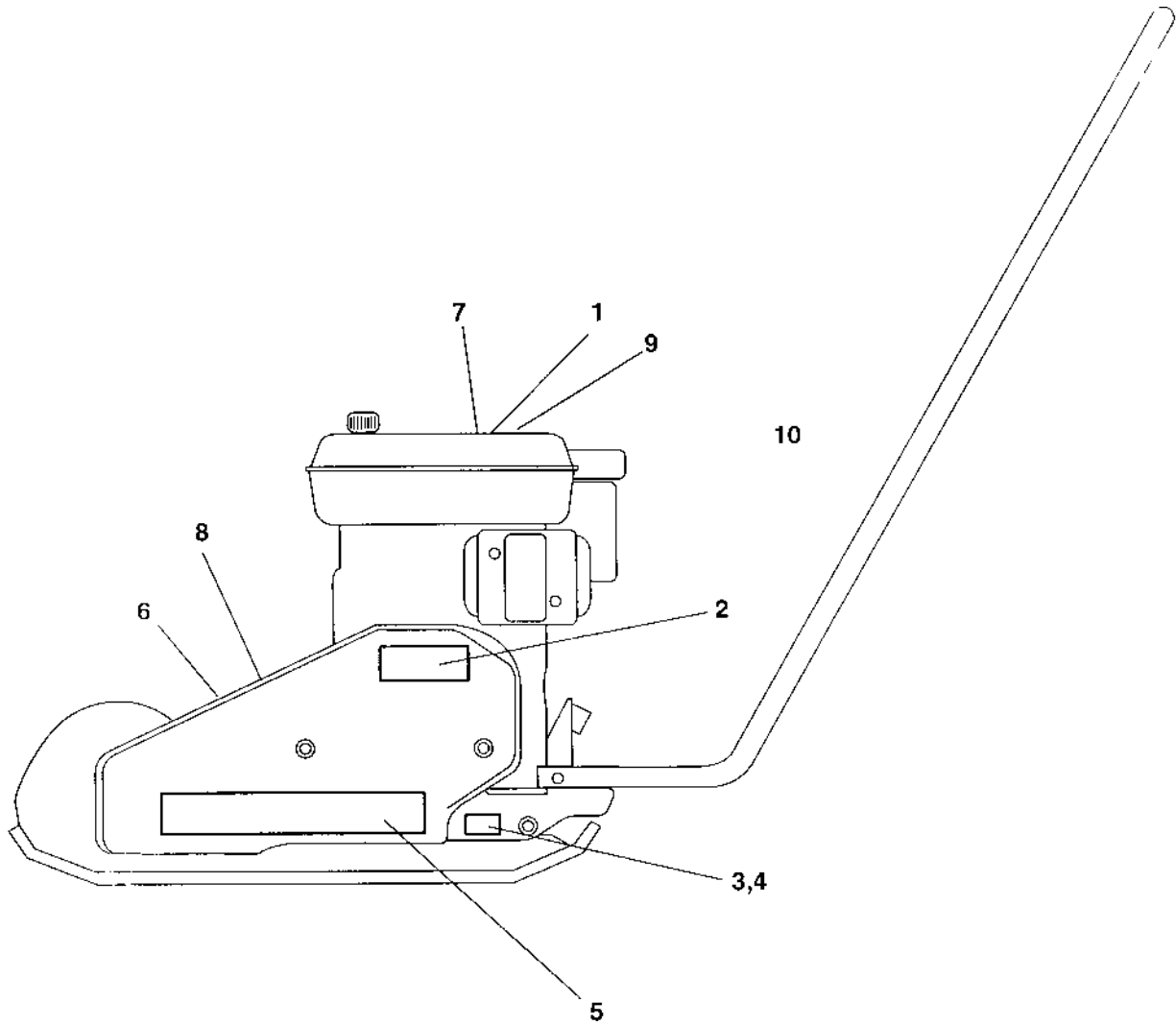
B) Assembly cross to 912481

C) Assembly cross to 912498



Decals and documenttion

Ref. No.	Part No.	Rem.	Qty	Description	Code
10				Decals and documentation (Page 26)	



Decals and documentation

Ref. No.	Part No.	Rem.	Qty	Description	Code
1	281898		1	Decal, ear protection	
2	100501295		1	Decal	
3	385135SE		1	Identification plate	
4	527002		4	Drive screw	
5	100501290		1	Decal	
6	903832		1	Safety decal	
7	904680		1	Decal "Read instruction manual"	
8	281269		1	Decal "LIFT"	
9	791291		1	Decal "Sound power level"	
10			1	Documentation	
			1	.Spare parts catalogue SMV065	
			1	.Instruction book, engine Honda	
			1	.Operation and maintenance IMV065	
			1	.Warrenty registration certificate	
			1	.Warranty conditions	

NUMERICAL INDEX

Part Number	Page	Part Number	Page	Part Number	Page
100501290	27	383578	11		
100501295	27	383582	11		
100900105	19	383583	11		
111178	23	383584	11		
134056	23	383902	15		
150015	23	384812	11		
151023	23	385135SE	27		
167041	15	500003	7		
232150	9	500019	7		
238298	19	500021	9,11		
238301	19	500022	9		
238303	19	500031	9		
238306	19	500053	15,23		
238314	19	500075	9		
238322	19	500087	11		
239059	19	500161	11		
239060	19	508012	7		
239061	19	508073	19		
239062	19	527002	27		
239063	19	533023	19		
239064	19	535002	23		
239065	19	570005	19		
239066	19	570006	9		
239324	19	586001	11		
239374	19	586002	7,9		
239375	19	586003	7,9,19		
239376	19	586018	7,11		
239377	19	600004	9		
239378	19	600006	9		
239379	19	615043	9		
239380	19	615044	9		
239381	19	791172	7		
239391	19	791291	27		
239539	23	901650	9		
239680	19	901688	15		
239682	19	902160	9		
239685	19	902287	7		
239771	19	902989	15		
239772	19	903639	15		
239823	9	903832	27		
239854	19	904228	7		
239855	23	904229	7,11,19		
239857	23	904230	7,11		
271419	9	904281	11		
280064	15	904341	7		
281269	9,27	904567	7		
281898	27	904640	7		
282078	7,19	904680	27		
282079	7	904734	23		
282191	23	912477	23		
282371	19	912480	23		
282516	7	912481	23		
282536	15	912498	23		
282537	15	924842	19		
282538	15	928379	23		
282541	7	938076	23		
282543	7	938229	19		
282544-10	7				
282545-10	7				
282547	7				
282551	9				
282552	7,9				
282553	7,9				
282556	9				
282558	9				
282561	7				
282562	23				
282566	9				
282569	9				
282570	9				
283685	9				
287370	9				
350028	15				
381953	7				
382111	19				
382714	19				
383031	19				

