

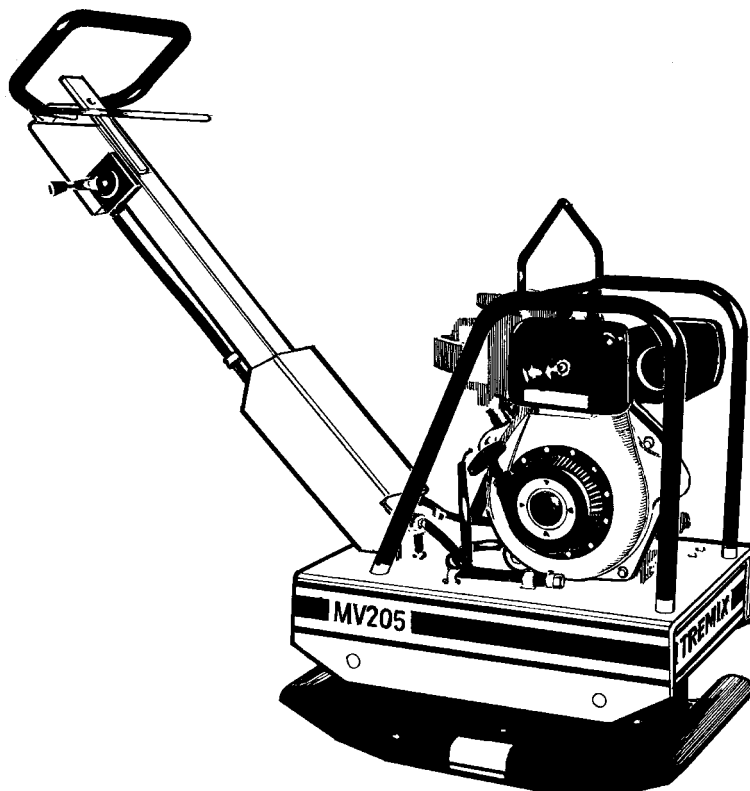
TREMIX

Forward and reverse soil compactor

MV 205

SPARE PARTS CATALOGUE

SMV205-1EN1



TREMIX®

Metso Construction Equipment AB
Stensättravägen 9, Box226
SE- 127 24 Skärholmen, Sweden
Tel: +46 8 603 32 00 Telefax: +46 8 646 72 61

Forward and reverse soil compactor MV 205

Spare Parts Catalogue

SMV205 -1EN1

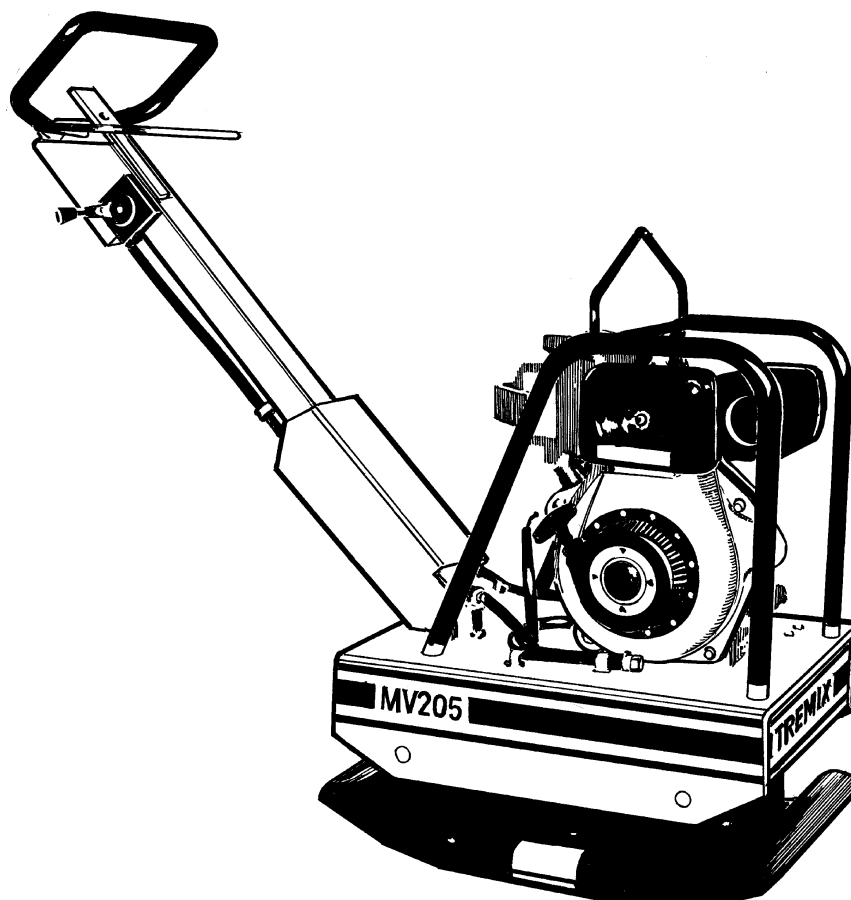
Engines:

Yanmar L40AE

Published catalogue issues valid for these compactors:

<i>Catalogue</i>	<i>Issue date</i>
------------------	-------------------

<i>SMV205-1EN1</i>	<i>2002-03</i>
--------------------	----------------





RESERVDLSBESTÄLLNING

Följande uppgifter ska lämnas vid beställning av reservdelar för att undvika leveransfel:

1. Maskintyp.
2. Vältensserienummer.
3. Antal av önskad reservdel.
4. Reserdelens artikelnummer.
5. Reservdelens benämning.
6. Måttuppgifter vid beställning av metervara.

ERSATZTEILBESTELLUNG

Zur Vermeidung von Fehllieferungen sind bei der Bestellung von Ersatzteilen folgende Angaben zu machen:

1. Maschinentyp.
2. Herstellungsnummer.
3. Bestellmenge. (Quantity)
4. Ersatzteilnummer. (Part N°)
5. Ersatzteilbenennung. (Denomination)
6. Massangaben bei Bestellung von Meterware.

PEDIDO DE RECAMBIOS

Para evitar errores en las entregas, deberán indicarse los siguientes datos al hacer un pedido de recambios:

1. Tipo de máquina.
2. Número de serie.
3. Cantidad de piezas deseadas. (Quantity)
4. Número de artículo de la pieza de recambio. (Part N°)
5. Denominación de la pieza. (Denomination)
6. Indíquese la medida al solicitar un artículo que se expide por metros.

ORDERING SPARE PARTS

To avoid errors in delivery, please give the following information when ordering spare parts:

1. Type of machine.
2. Roller serial number.
3. Quantity required.
4. Part number.
5. Parts denomination.
6. Dimensions when ordering per length.

ORDINI DI RICAMBI

Per evitare errori nelle consegne di ricambi, Vi preghiamo di comunicarci le seguenti informazioni al momento dell'ordinazione:

1. Tipo di macchina.
2. Numero di serie della macchina.
3. Quantità dei pezzi desiderati. (Quantity)
4. Numero di codice del pezzo. (Part N°)
5. Descrizione del pezzo di ricambio. (Denomination)
6. Misura, in caso di ordine per metro.

COMMANDE DE PIÈCES DE RECHANGE

Les indications suivantes doivent être fournies lors de la commande de pièces de rechange, afin d'éviter toute erreur de livraison:

1. Type de machine.
2. Numéro de série.
3. Quantité désirée de pièce de rechange. (Quantity)
4. Numéro de la pièce de rechange. (Part N°)
5. Dénomination de la pièce de rechange. (Denomination)
6. Longueur en cas de commande au mètre.

YOUR AGENT/DEALER:

PÄRMETIKETT

För att undvika fel vid reservdelsbeställning finns här nedan två etiketter som passar i fickorna på pärmarnas ryggar. På dessa kan man se från vilket vältnummer av aktuell maskin reservdelskatalogen gäller. Gör så här:

1. Tag denna sida ur pärmern.
2. Klipp ut etiketten till VÄNSTER (1) och sätt in den i fickan på DENNA pärmens rygg.
3. Finns det en etikett till HÖGER (2), kan denna användas på pärmern för FÖREGÅENDE utgåva av denna katalog.
4. Kasta detta papper.

KATALOG-BESCHRIFTUNG

Zur Vermeidung von Fehlen bei der Ersatzteilbestellung benutzen Sie bitte die unteren Beschriftungen, um die Kataloge auf der Rückseite zu kennzeichnen. Auf der Beschriftung ist angegeben, für welche Maschinennummern der jeweilige Katalog gültig ist. Ablauf:

1. Nehmen Sie dieses Blatt aus dem Katalog.
2. Schneiden Sie die LINKE Beschriftung (1) aus. Schieben Sie die Beschriftung in die tasche auf DEM Katalogrücke.
3. Sollte die Beschriftung unten RECHTS (2) mitgeliefert werden, kennzeichnen Sie damit bitte die ÄLTERE Ausführung dieses Kataloges.
4. Den Rest dieses Blattes bitte vernichten.

ETIQUETA PARA LA CARPETA

Para evitar errores al pedir repuestos utilicen las etiquetas abajo descritas para identificar los catálogos en la parte trasera de la carpeta. En la etiqueta se ven los números de referencia de la serie para la cual es válido el catálogo. Instrucciones:

1. Quitar esta página de la carpeta.
2. Corta la etiqueta IZQUIERDA (1) y ponerla en esta carpeta en la parte trasera.
3. Si hay una etiqueta en la parte DERECHA (2) se puede utilizar en la carpeta para el catálogo que PRECEDE a esta.
4. Tirar esta hoja.

BINDER LABEL

To avoid errors when ordering spare parts use the labels below to identify the catalogues on the back of the binder. The label contain the serial number range for which the catalogue is valid. Do like this:

1. Remove this page from the binder.
2. Cut out the LEFT label (1) and put it on THIS binders back.
3. If there is a label to the RIGHT (2), it can be used on the binder for PRECEDING issue of this catalogue.
4. Throw away this paper.

ETICHETTA POSTA SUL RACCOGLITORE

Per evitare errori quando ordinate pezzi di ricambio, usate le etichette in calce che servono ad identificare i cataloghi sul retro del raccoglitore. L'etichetta indica il numero di matricola delle macchine prese in considerazione nel catalogo.

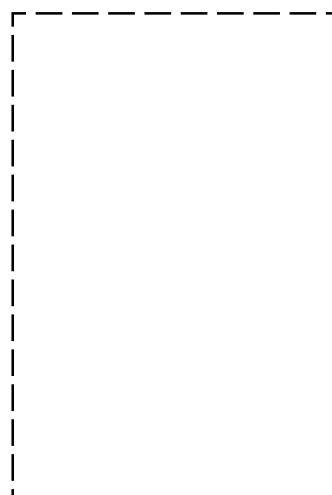
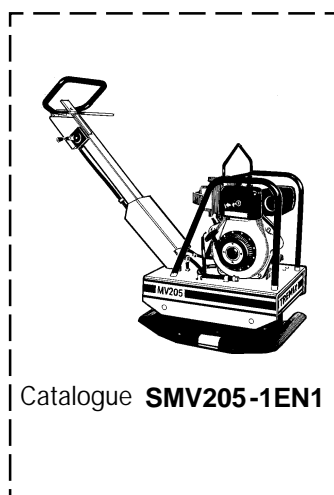
1. Rimuovete questa pagina dal raccoglitore.
2. Ritagliate l'etichetta posta a SINISTRA (1) e ponetela sul retro DEL raccoglitore.
3. Se trovate anche un'etichetta sulla DESTRA (2), ritagliatela e ponetela sul raccoglitore relativo alla PRECEDENTE edizione del catalogo.
4. Distruggete questo foglio.

ETIQUETAGE DU CATALOGUE

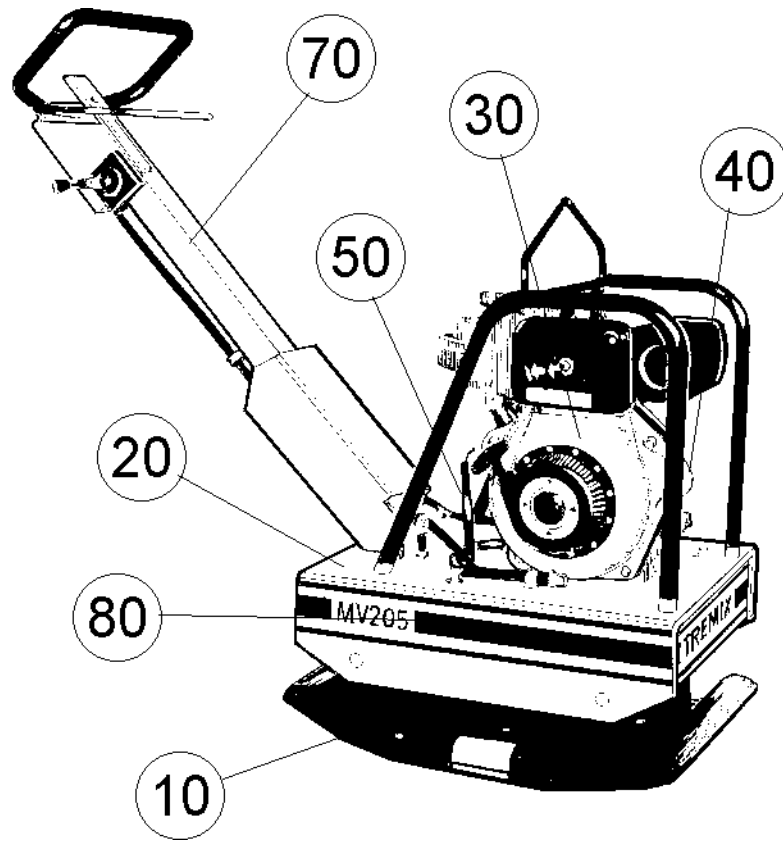
Afin d'éviter des erreurs lors de commandes de pièces de rechange, nous vous conseillons d'apposer les marquages ci-dessous à l'arrière du classeur, pour identifier les catalogues. Ce marquage indique les numéros de série pour lesquels le catalogue est adapté. Il convient de procéder de la façon suivante:

1. Retirez cette page du classeur.
2. Découpez l'étiquette de GAUCHE (1), et apposez-la à l'arrière de CE catalogue.
3. Si il y a une étiquette à DROITE (2), vous pourrez l'apposer sur le classeur de l'édition PRECEDENTE du catalogue.
4. Détruire cette feuille.

1.



MV205	2
Ground plate and engine plate	4
Ground plate and engine plate	6
Eccentric element	8
Eccentric element	10
Engine	12
Engine Yanmar L40 AE	14
Power transmisson	18
Centrifugal clutch	20
Hydraulic system	22
Hydraulic system	24
Handle	26
Handle	28
Decals and documentation	30
Decals and documentation	32

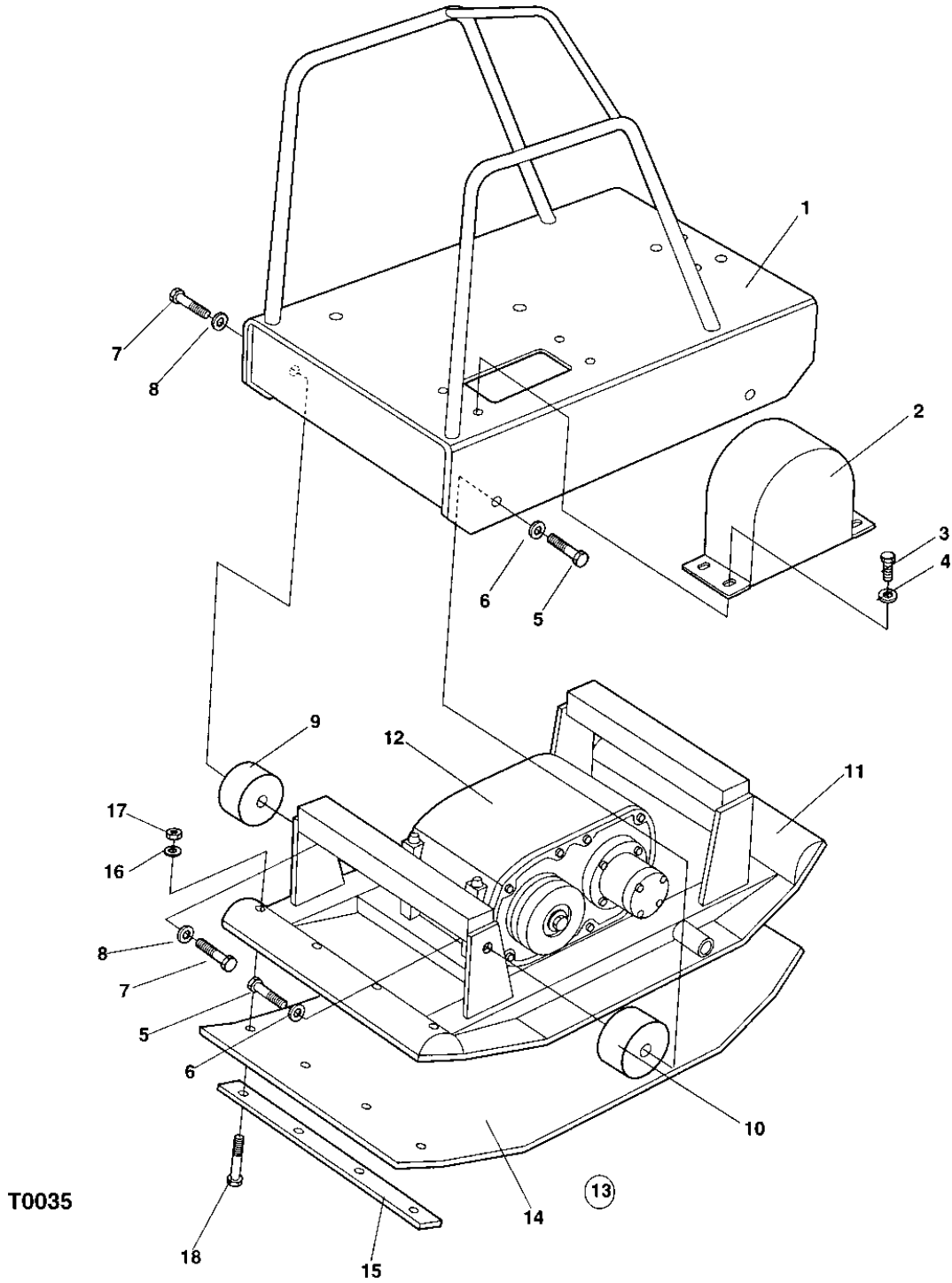


Ref. No.	Part No.	Rem.	Qty	Description	Code
10				Ground plate and engine plate (Page 4)	
20				Eccentric element (Page 8)	
30				Engine (Page 12)	
40				Power transmisson (Page 18)	
50				Hydraulic system (Page 22)	
70				Handle (Page 26)	
80				Decals and documentation (Page 30)	



Ground plate and engine plate

Ref. No.	Part No.	Rem.	Qty	Description	Code
10				Ground plate and engine plate (Page 6)	



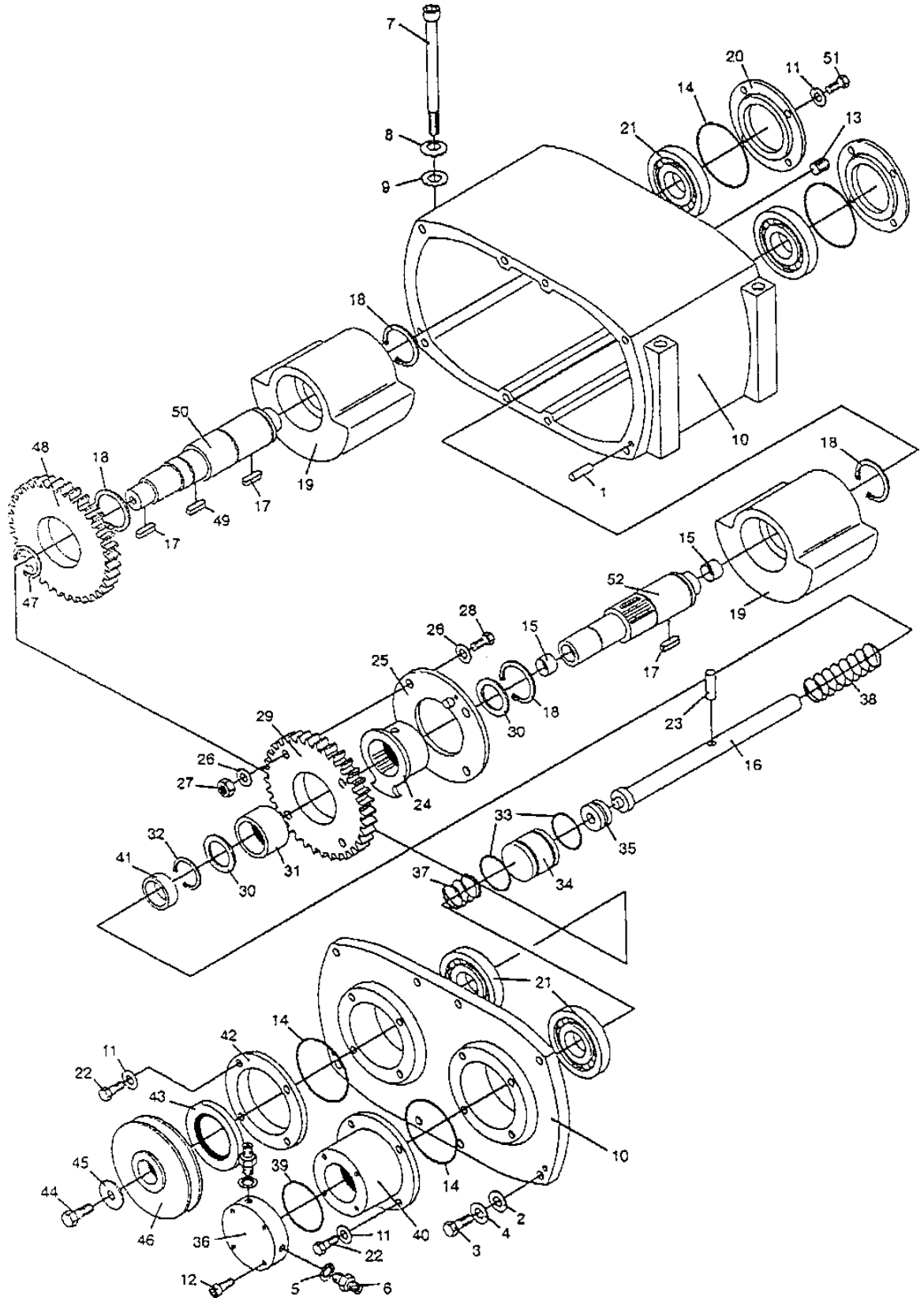
T0035

Ground plate and engine plate

Ref. No.	Part No.	Rem.	Qty	Description	Code
1	100508039		1	Upper part	
2	100507040		1	Belt guard	
3	500019		4	Screw M8-1,25x16 8,8	
4	904229		4	Washer 8,4x16x1,5	
5	500035		2	Screw	
6	904231		2	Washer 13x24x2	
7	100910146		6	Screw	
8	904230		6	Washer 10,5x22x2	
9	100900807		3	Shock absorber	
10	100900811		1	Shock absorber	
11	100508036		1	Ground plate	
12		A	1	Eccentric element, cpl	
13			1	Polyurethane plate, cpl	
14	100508055		1	.Polyurethane plate	
15	280897		1	.Bracket	
16	615045		4	.Conical spring washer	
17	570007		4	.Nut	
18	500117		4	.Screw	

A) See section eccentric element

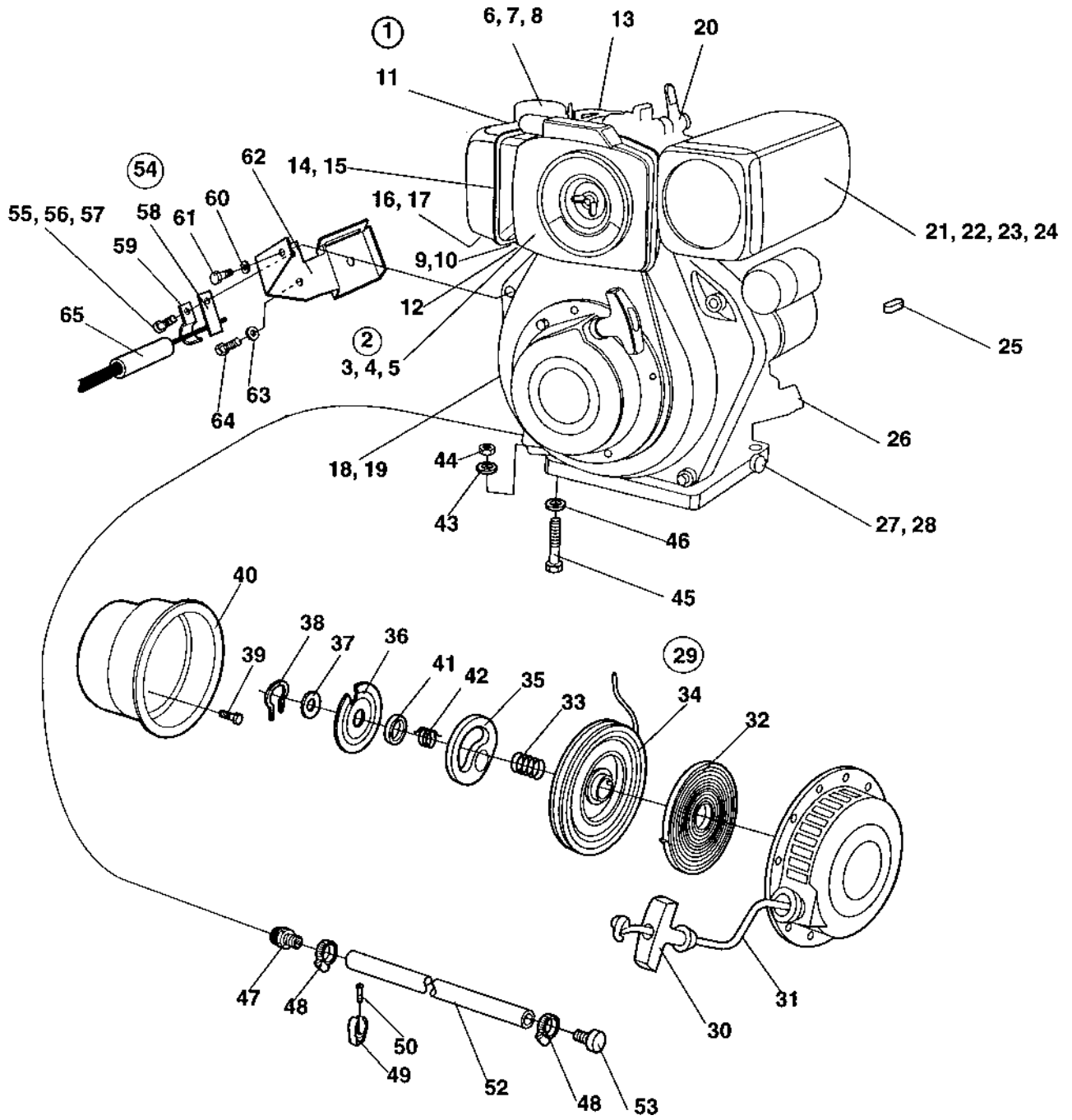
Ref. No.	Part No.	Rem.	Qty	Description	Code
10				Eccentric element (Page 10)	



Ref. No.	Part No.	Rem.	Qty	Description	Code
1	900331		2	Cylinder pin	
2	100900302		8	Washer	
3	100900187		8	Screw	
4	100900311		8	Washer	
5	100901524	A	2	Washer	
6	100901525	A	2	Connector	
7	100910169		4	Screw	
8	100900312		8	Washer	
9	904231		4	Washer 13x24x2	
10	100507001		1	Eccentric housing	
11	100900300		16	Washer	
12	100910155		4	Screw	
13	100901522		1	Plug	
14	100900721		4	O-ring	
15	100900629		2	Bushing	
16	100507021		1	Control rod	
17	100900507		4	Key	
18	100900436		4	Retainer ring	
19	100507004		2	Eccentric	
20	100507024		2	Cover	
21	100900628		4	Bearing	
22	100900114		8	Screw	
23	100900332		1	Cylinder pin	
24	100507012		1	Retainer	
25	100507017		1	Disc	
26	100900301		8	Washer	
27	100900203		4	Nut	
28	100900125		4	Screw	
29	100507015		1	Gear	
30	100507013		2	Washer	
31	100901011		1	Roller clutch	
32	100900401		1	Retaining ring	
33	100900722		2	O-ring	
34	100507020		1	Piston	
35	100900630		1	Bearing	
36	100507019		1	Cover	
37	100900902		1	Spring	
38	100900901		1	Spring	
39	100900723		1	O-ring	
40	100507018		1	Cylinder	
41	100507014		1	Spacer ring	
42	100507022		1	Cover	
43	100900727		1	Sealing	
44	100900123		1	Screw	
45	100502016		1	Washer	
46	100508005		1	V-belt disk	
47	100900437		1	Retaining ring	
48	100507023		1	Gear	
49	100900507		1	Key	
50	100507010		1	Shaft	
51	100900116		8	Screw	
52	100507011		1	Shaft	

A) See hydraulic system

Ref. No.	Part No.	Rem.	Qty	Description	Code
10				Engine Yanmar L40 AE (Page 14)	



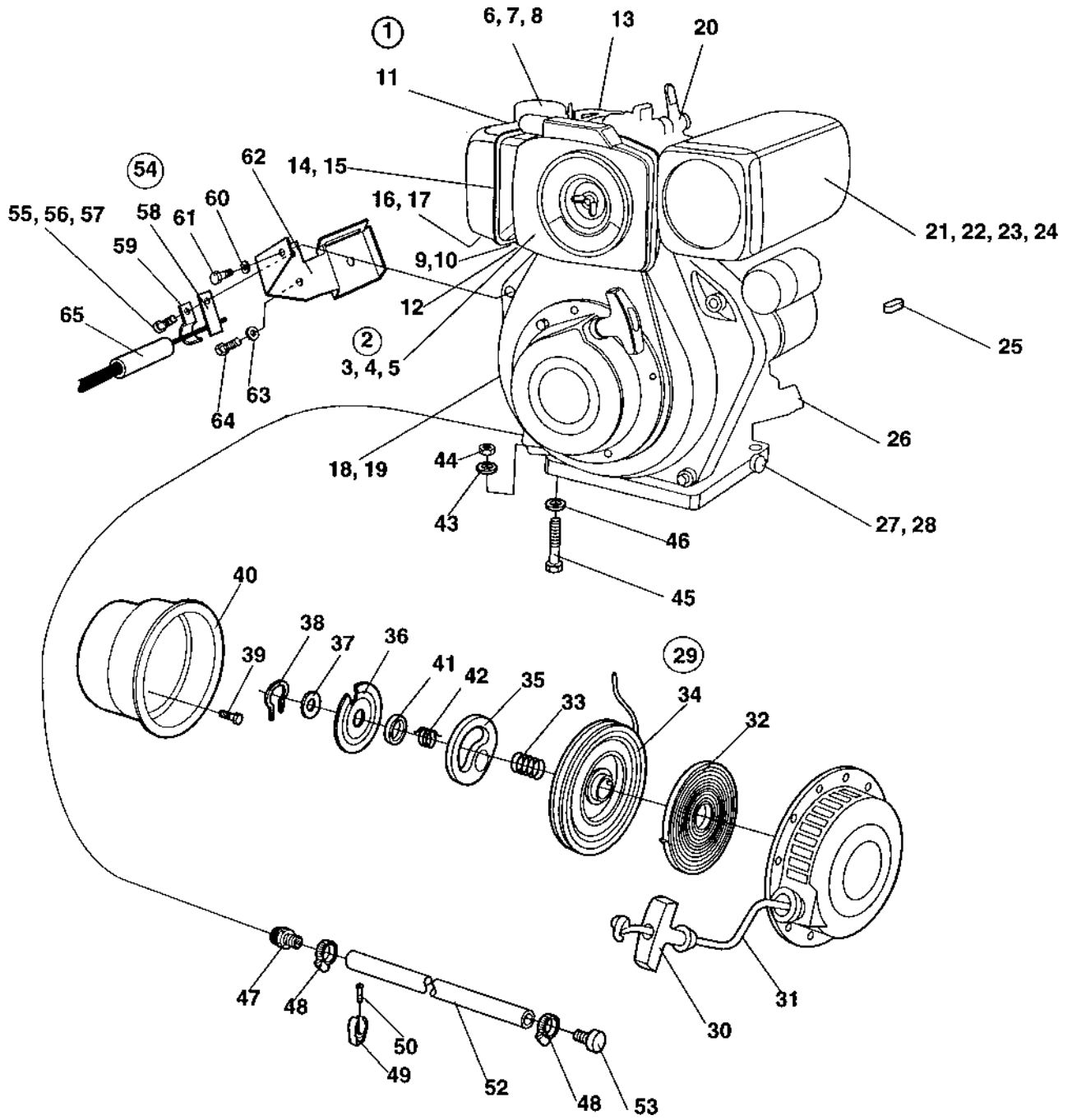
Ref. No.	Part No.	Rem.	Qty	Description	Code
1			1	Engine	
2	239722		1	.Air cleaner assembly	
3	100901722		1	..Filter element	
4	239295		1	..Gasket	
5	239276		1	..Wing nut	
6	239198		1	.Fuel tank	
7	238457		1	..Filler cap	D
8	238458		1	..Fuel strainer	D
9	239307		1	..Sealing	
10	239308		1	..Screw	
11	239156		4	..Rubber protection	
12	239196		1	.Bracket	
13	239187		1	.Tank bracket, upper	
14	238459		1	.Fuel filter	A
15	239360		1	..Gasket, fuel filter	
16	239193		1	.Fuel cock cpl	
17	238460		1	..O-ring	
18	238454		1	.Oil filter	A
19	238455		1	..O-ring	A
20	238446		1	.Gasket, valve cap	D
21	239723		1	.Muffler	
22	239365		6	.Screw cover	
23	239366		1	.Gasket, muffler	
24	239724		1	.Muffler cap	
25	350015		1	.Flat key	
26	239362		2	.Oil dipstick	
27	238447		1	.Oil drain plug	
28	238448		1	.Sealing washer	
29	239005		1	.Starter assy, recoil	D
30	238450		1	..Knob recoil stater	B
31	238449		1	..Starter rope	B
32	238451		1	..Return spring	B
33	238453		1	..Spring	B
34	239352		1	..Reel	
35	238452		1	..Ratchet	
36	239355		1	..Friction plate	
37	239356		1	..Washer	
38	239357		1	..Circlip	
39	239361		3	..Screw	
40	239358		1	..Pulley	
41		B	1	..Spring	
42		B	1	..Spring	
43	904229		4	Washer 8,4x16x1,5	
44	570005		4	Nut M8	
45		A	4	Screw	
46	904230		12	Washer 10,5x22x2	
47	100504811		1	Hose connection	
48	313001		2	Hose clamp	
49	281234		1	Ryw-clips	
50	281115		1	Screw	
52	100901382		1	Hose	
53	100504609		1	Plug	
54	465013		1	Clamp	D
55		C	2	.Screw	D
56		C	2	.Washer	D
57		C	2	.Nut	D
58		C	1	.Bracket	D
59		C	1	.Bracket	D
60		D	1	Washer	D
61		D	1	Screw	D
62	100508051		1	Bracket	

A) Welded with engine plate

B) Not used in this model

C) Included in 465013

D) Included in engine

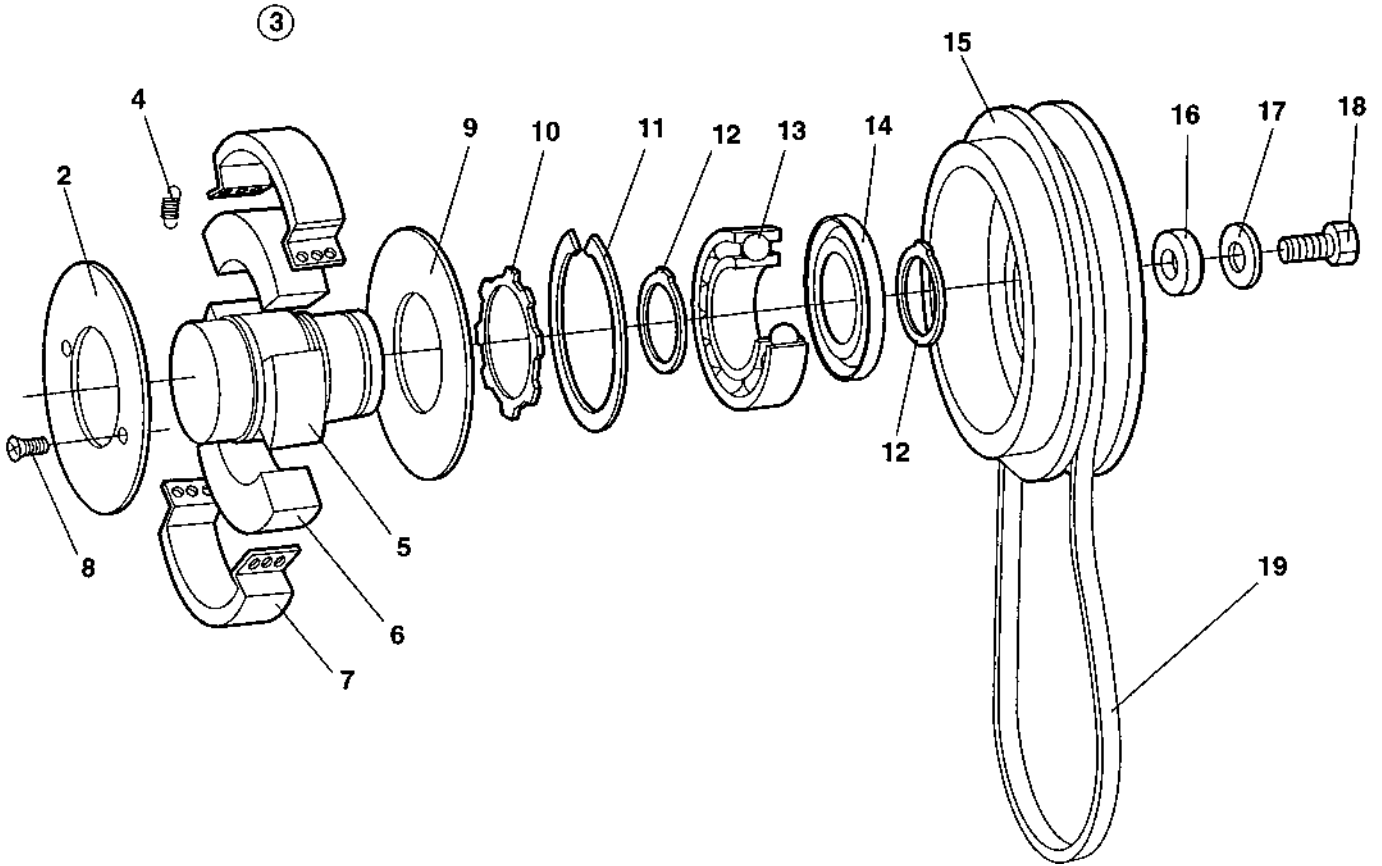


Ref. No.	Part No.	Rem.	Qty	Description	Code
63		D	1	Washer	
64		D	1	Screw	
65	100901611		1	Control cable	
D) Included in engine					

Ref. No.	Part No.	Rem.	Qty	Description	Code
10				Centrifugal clutch (Page 20)	

TREMIX®
Centrifugal clutch
17326

①

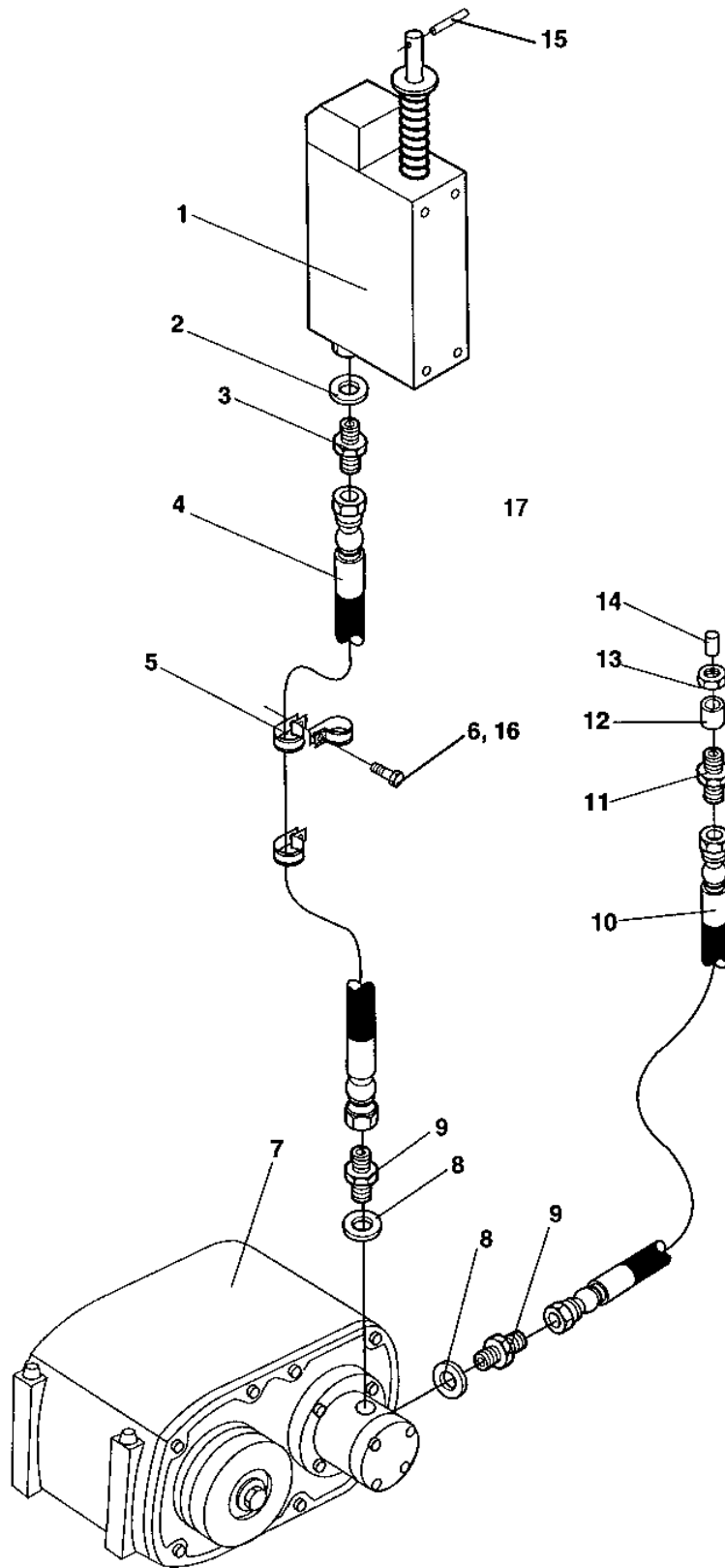


Centrifugal clutch

Ref. No.	Part No.	Rem.	Qty	Description	Code
1	100901010		1	Centrifugal clutch cpl	
2	239857		1	.Cover	
3			1	.Clutch lining set	
4	936902		4	..Spring	
5	239856		1	..Hub	
6	100901032		2	..Centrifugal weight	
7	100901018		2	..Clutch lining	
8	535002		2	.Screw	
9	100901024		1	.Cover	
10	938532		1	.Retaining ring	
11	938725		1	.Snap ring	
12	150015		2	.Snap ring	
13	938724		1	.Ball bearing	
14	938727		1	.Nilos ring	
15	939081		1	.V-belt pulley	
16		A	1	Washer	
17	100501029		1	Washer	
18	513003		1	Screw	
19	100901015		1	V-belt	

A) Not used in this model

Ref. No.	Part No.	Rem.	Qty	Description	Code
10				Hydraulic system (Page 24)	



Ref. No.	Part No.	Rem.	Qty	Description	Code
1		A	1	Hydraulic control	
2	100901524		1	Washer	
3	100901525		1	Connector	
4	100507043		1	Hydraulic hose	
5	921039		2	Pipe clamp	
6	100900147		2	Screw	
7		B	1	Eccentric element	
8	100901524		2	Washer	
9	100901525		2	Connector	
10	100507039		1	Hydraulic hose	
11	100507033		1	Adapter	
12	100901523		1	Nipple	
13	100900218		1	Nut	
14	100901522		1	Plug	
15		A	1	Tension pin	
16	100900300		2	Washer	
17	100901431		1	Handle pump	

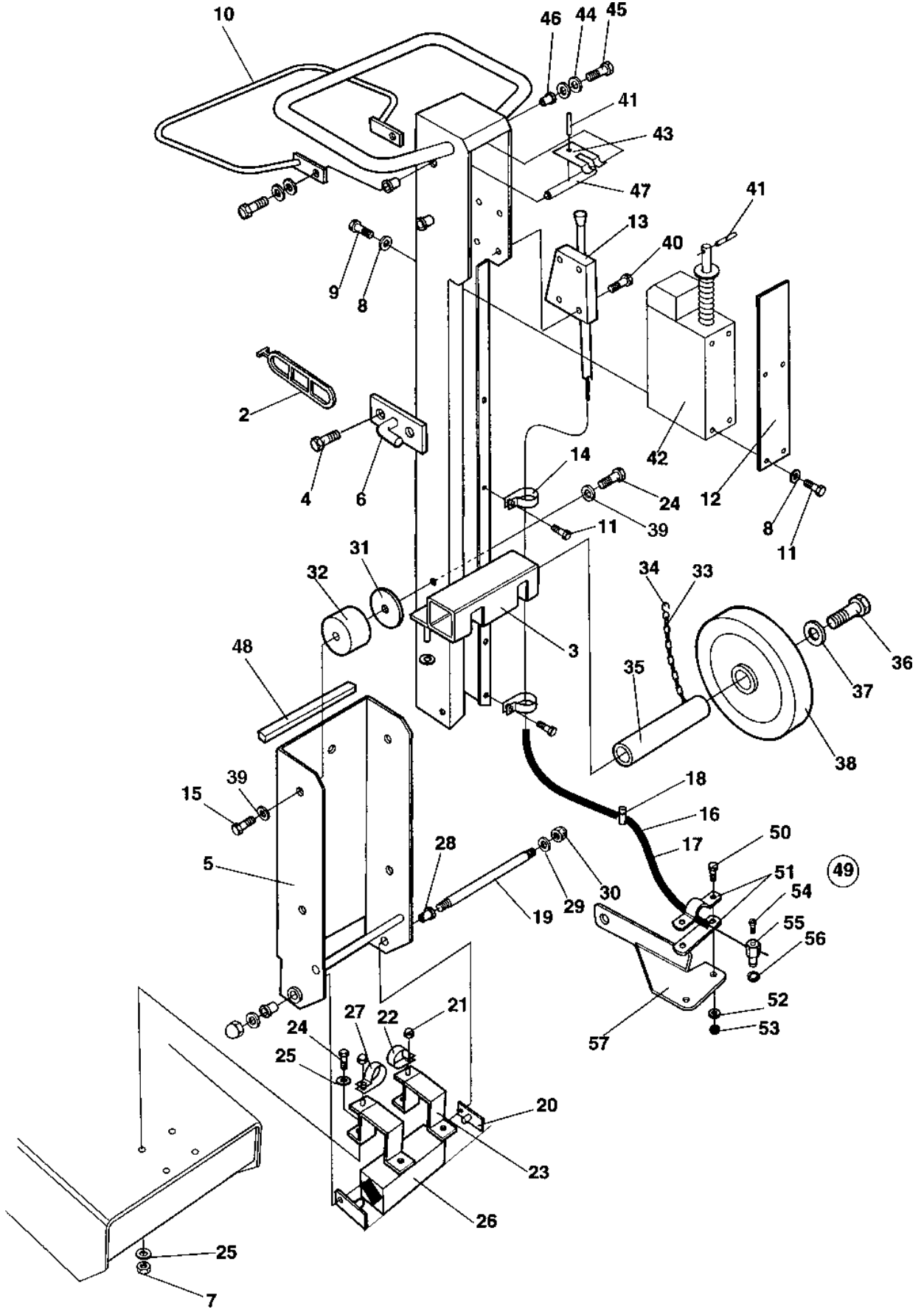
A) See section handle

B) See section eccentric element



Handle

Ref. No.	Part No.	Rem.	Qty	Description	Code
10				Handle (Page 28)	



Handle

Ref. No.	Part No.	Rem.	Qty	Description	Code
1	100507026		1	Operating handle	
2	100901622		1	Strap	
3	100508032		1	Wheel stand	
	100508034	A	2	Locking screw	
	100508035	A	2	Clamp	
	100900302	A	2	Washer	
	100900323	A	2	Split pin	
4	513008		2	Screw	
5	100507034		1	Handle bracket	
6	100508060		1	Fixing hook	
7	570006		4	Nut M10	
8	100900300		9	Washer	
9	100900148		4	Screw	
10	100507031		1	Retainer	
11	100900147		6	Screw	
12	100507046		1	Cover plate	
13	100901610		1	Control	
14	921039		2	Pipe clamp	
15	500043		4	Screw M10x16H 8,8	
16	929109		1	Hose	D
17	100901611		1	Control cable	
18	100507049		1	Nipple	
19	100507038		1	Stud	
20	100507036		2	Retainer	
21	581018		2	Nut	
22	100900445		1	Clamp	
23	100507042		2	Clamp	
24	500048		4	Screw M10-1,5x20 8,8	
25	904229		8	Washer 8,4x16x1,5	
26	100900812		1	Shock absorber	
27	100900435		1	Clamp	
28	100507037		2	Sleeve	
29	100900330		2	Washer	
30	100900211		2	Nut	
31	100507029		4	Washer	
32	100900808		4	Shock absorber	
33	100901338		2	Plastic hose	
34	100900426		2	S-hook	
35	100908053		2	Shaft	
36	513025		2	Screw	
37	100501347		2	Washer	
38	100901607		2	Wheel	
39	904230		8	Washer 10,5x22x2	
40	100910107		4	Screw	
41	100800328		2	Tension pin	
42	100901429		1	Hydraulic control	
43	100507028		1	Fork	
44	100900329		2	Washer	
45	100900151		2	Screw	
46	100900632		2	Slide bearing	
47	100507030		1	Shaft	
48	100507055		1	Rubber protection	
49		B,C	1	Control bracket, cpl	
50		B,C	1	Screw	
51		B,C	1	Bracket	
52		B,C	1	Washer	
53		B,C	1	Nut	
54		B,C	1	Screw	
55		B,C	1	Nipple	
56		B,C	1	Clamp	
57		B,C	1	Bracket	

A) Used in old version

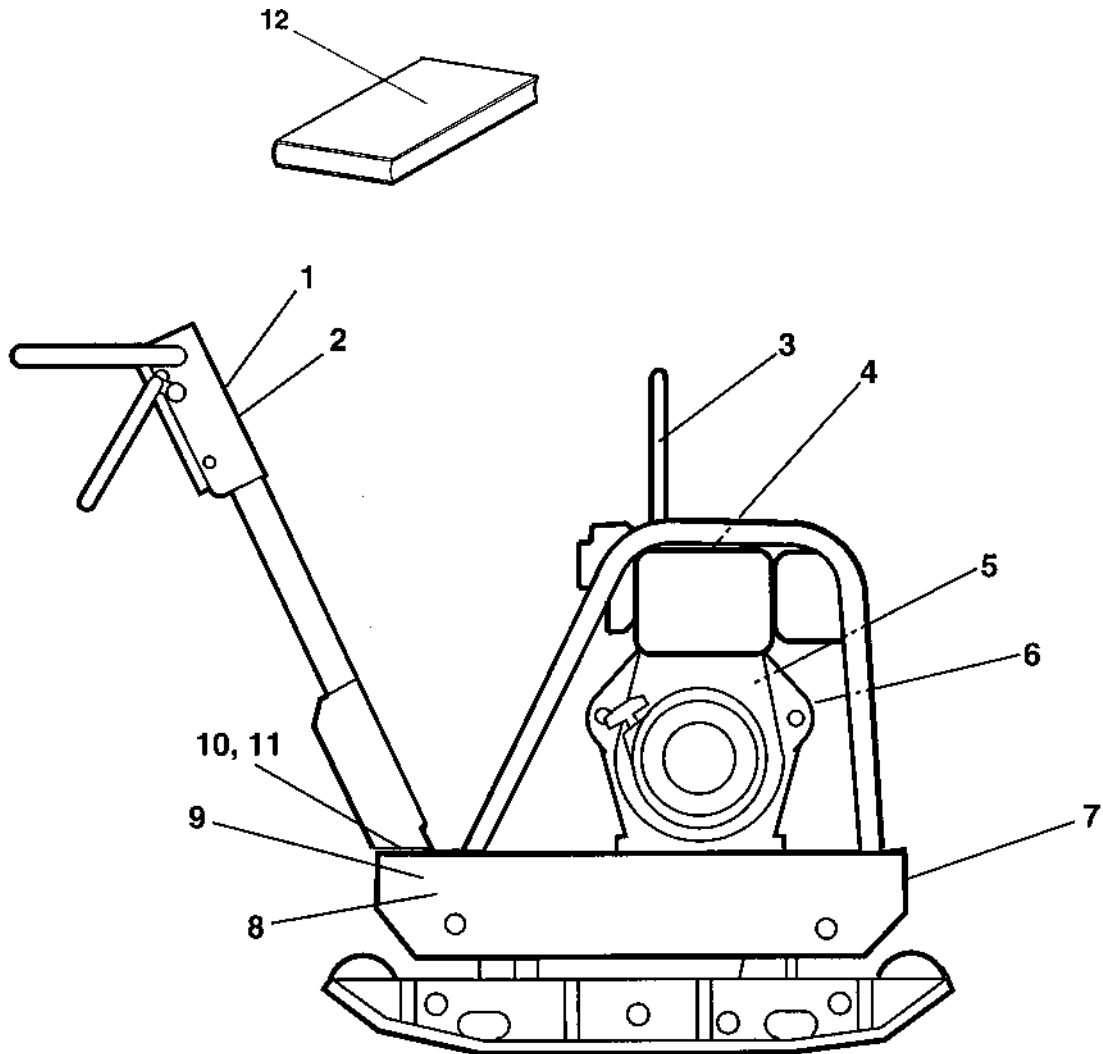
B) Not used in this model

C) See section engine



Decals and documentation

Ref. No.	Part No.	Rem.	Qty	Description	Code
10				Decals and documentation (Page 32)	



Decals and documentation

Ref. No.	Part No.	Rem.	Qty	Description	Code
1	100504272		1	Decal, driving direction	
2	904680		1	Decal "Read instruction manual"	
3	281269		2	Decal "LIFT"	
4	281898		1	Decal, ear protection	
5	100501275		1	Decal, Tremix	
6	903832		1	Safety decal	
7	100501276		1	Decal, Tremix	
8	287871		1	Decal	
9	287872		1	Decal	
10	385135		1	Identification plate	
11	527002		4	Drive screw	
12			1	Instruction handbook, cpl	
			1	.Instruction book, engine	
			1	.Operation IMV205	
			1	.Spareparts catalogue SMV205	

NUMERICAL INDEX

Part Number	Page	Part Number	Page	Part Number	Page
100501029	21	100900445	29	239723	15
100501275	33	100900507	11	239724	15
100501276	33	100900628	11	239856	21
100501347	29	100900629	11	239857	21
100502016	11	100900630	11	280897	7
100504272	33	100900632	29	281115	15
100504609	15	100900721	11	281234	15
100504811	15	100900722	11	281269	33
100507001	11	100900723	11	281898	33
100507004	11	100900727	11	287871	33
100507010	11	100900807	7	287872	33
100507011	11	100900808	29	313001	15
100507012	11	100900811	7	350015	15
100507013	11	100900812	29	385135	33
100507014	11	100900901	11	465013	15
100507015	11	100900902	11	500019	7
100507017	11	100901010	21	500035	7
100507018	11	100901011	11	500043	29
100507019	11	100901015	21	500048	29
100507020	11	100901018	21	500117	7
100507021	11	100901024	21	513003	21
100507022	11	100901032	21	513008	29
100507023	11	100901338	29	513025	29
100507024	11	100901382	15	527002	33
100507026	29	100901429	29	535002	21
100507028	29	100901431	25	570005	15
100507029	29	100901522	11,25	570006	29
100507030	29	100901523	25	570007	7
100507031	29	100901524	11,25	581018	29
100507033	25	100901525	11,25	615045	7
100507034	29	100901607	29	900331	11
100507036	29	100901610	29	903832	33
100507037	29	100901611	15,17	904229	7,15,29
100507038	29		,29	904230	7,15,29
100507039	25	100901622	29	904231	7,11
100507040	7	100901722	15	904680	33
100507042	29	100908053	29	921039	25,29
100507043	25	100910107	29	929109	29
100507046	29	100910146	7	936902	21
100507049	29	100910155	11	938532	21
100507055	29	100910169	11	938724	21
100508005	11	150015	21	938725	21
100508032	29	238446	15	938727	21
100508034	29	238447	15	939081	21
100508035	29	238448	15		
100508036	7	238449	15		
100508039	7	238450	15		
100508051	15	238451	15		
100508055	7	238452	15		
100508060	29	238453	15		
100800328	29	238454	15		
100900114	11	238455	15		
100900116	11	238457	15		
100900123	11	238458	15		
100900125	11	238459	15		
100900147	25,29	238460	15		
100900148	29	239005	15		
100900151	29	239156	15		
100900187	11	239187	15		
100900203	11	239193	15		
100900211	29	239196	15		
100900218	25	239198	15		
100900300	11,25	239276	15		
	,29	239295	15		
100900301	11	239307	15		
100900302	11,29	239308	15		
100900311	11	239352	15		
100900312	11	239355	15		
100900323	29	239356	15		
100900329	29	239357	15		
100900330	29	239358	15		
100900332	11	239360	15		
100900401	11	239361	15		
100900426	29	239362	15		
100900435	29	239365	15		
100900436	11	239366	15		
100900437	11	239722	15		

