

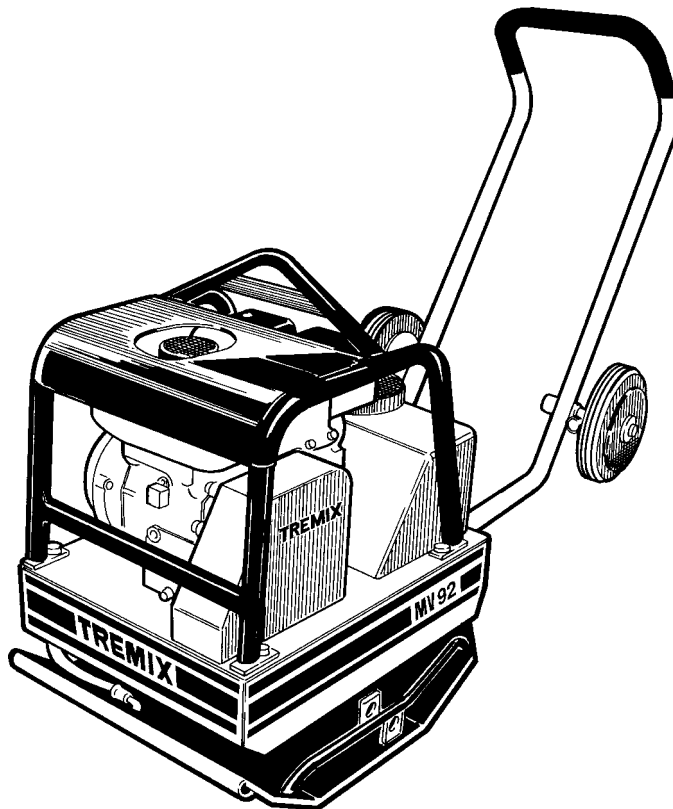
TREMIX

Asphalt and soil compactor

MV 92

SPARE PARTS CATALOGUE

SMV092-1EN1



TREMIX[®]

Metso Construction Equipment AB

Stensåtravägen 9, Box226

SE- 127 24 Skärholmen, Sweden

Tel: +46 8 603 32 00 Telefax: +46 8 646 72 61



**Asphalt and soil compactor
MV 92**

Spare Parts Catalogue

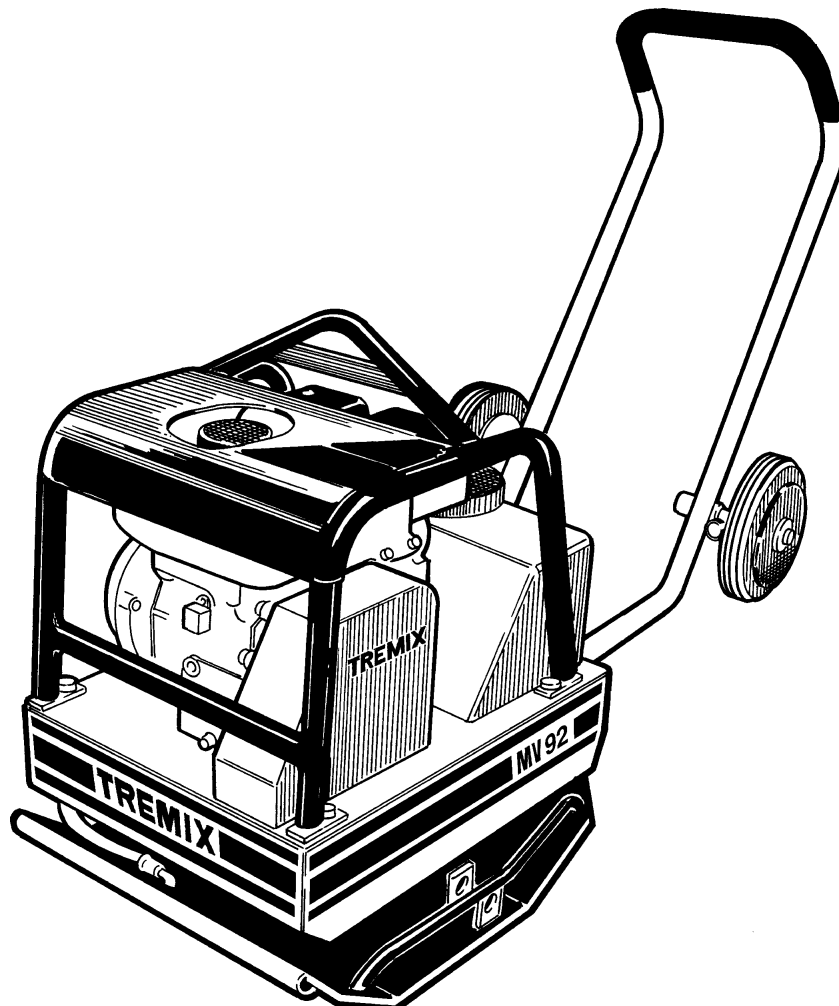
SMV092 -1EN1

Engines:

Honda GX120

Published catalogue issues valid for these compactors

<i>Catalogue</i>	<i>Issue date</i>	<i>Valid for serial numbers</i>
SMV092-1EN1	2002-02	



RESERVDLSBESTÄLLNING

Följande uppgifter ska lämnas vid beställning av reservdelar för att undvika leveransfel:

1. Maskintyp.
2. Vältensserienummer.
3. Antal av önskad reservdel.
4. Reserdelens artikelnummer.
5. Reservdelens benämning.
6. Måttuppgifter vid beställning av metervara.

ERSATZTEILBESTELLUNG

Zur Vermeidung von Fehllieferungen sind bei der Bestellung von Ersatzteilen folgende Angaben zu machen:

1. Maschinentyp.
2. Herstellungsnummer.
3. Bestellmenge. (Quantity)
4. Ersatzteilnummer. (Part N°)
5. Ersatzteilbenennung. (Denomination)
6. Massangaben bei Bestellung von Meterware.

PEDIDO DE RECAMBIOS

Para evitar errores en las entregas, deberán indicarse los siguientes datos al hacer un pedido de recambios:

1. Tipo de máquina.
2. Número de serie.
3. Cantidad de piezas deseadas. (Quantity)
4. Número de artículo de la pieza de recambio. (Part N°)
5. Denominación de la pieza. (Denomination)
6. Indíquese la medida al solicitar un artículo que se expide por metros.

ORDERING SPARE PARTS

To avoid errors in delivery, please give the following information when ordering spare parts:

1. Type of machine.
2. Roller serial number.
3. Quantity required.
4. Part number.
5. Parts denomination.
6. Dimensions when ordering per length.

ORDINI DI RICAMBI

Per evitare errori nelle consegne di ricambi, Vi preghiamo di comunicarci le seguenti informazioni al momento dell'ordinazione:

1. Tipo di macchina.
2. Numero di serie della macchina.
3. Quantità dei pezzi desiderati. (Quantity)
4. Numero di codice del pezzo. (Part N°)
5. Descrizione del pezzo di ricambio. (Denomination)
6. Misura, in caso di ordine per metro.

COMMANDE DE PIÈCES DE RECHANGE

Les indications suivantes doivent être fournies lors de la commande de pièces de rechange, afin d'éviter toute erreur de livraison:

1. Type de machine.
2. Numéro de série.
3. Quantité désirée de pièce de rechange. (Quantity)
4. Numéro de la pièce de rechange. (Part N°)
5. Dénomination de la pièce de rechange. (Denomination)
6. Longueur en cas de commande au mètre.

YOUR AGENT/DEALER:

PÄRMETIKETT

För att undvika fel vid reservdelsbeställning finns här nedan två etiketter som passar i fickorna på pärmarnas ryggar. På dessa kan man se från vilket vältnummer av aktuell maskin reservdelskatalogen gäller. Gör så här:

1. Tag denna sida ur pärmern.
2. Klipp ut etiketten till VÄNSTER (1) och sätt in den i fickan på DENNA pärmens rygg.
3. Finns det en etikett till HÖGER (2), kan denna användas på pärmern för FÖREGÅENDE utgåva av denna katalog.
4. Kasta detta papper.

KATALOG-BESCHRIFTUNG

Zur Vermeidung von Fehlern bei der Ersatzteilbestellung benutzen Sie bitte die unteren Beschriftungen, um die Kataloge auf der Rückseite zu kennzeichnen. Auf der Beschriftung ist angegeben, für welche Maschinennummern der jeweilige Katalog gültig ist. Ablauf:

1. Nehmen Sie dieses Blatt aus dem Katalog.
2. Schneiden Sie die LINKE Beschriftung (1) aus. Schieben Sie die Beschriftung in die tasche auf DEM Katalogrücke.
3. Sollte die Beschriftung unten RECHTS (2) mitgeliefert werden, kennzeichnen Sie damit bitte die ÄLTERE Ausführung dieses Kataloges.
4. Den Rest dieses Blattes bitte vernichten.

ETIQUETA PARA LA CARPETA

Para evitar errores al pedir repuestos utilicen las etiquetas abajo descritas para identificar los catálogos en la parte trasera de la carpeta. En la etiqueta se ven los números de referencia de la serie para la cual es válido el catálogo. Instrucciones:

1. Quitar esta página de la carpeta.
2. Corta la etiqueta IZQUIERDA (1) y ponerla en esta carpeta en la parte trasera.
3. Si hay una etiqueta en la parte DERECHA (2) se puede utilizar en la carpeta para el catálogo que PRECEDE a esta.
4. Tirar esta hoja.

BINDER LABEL

To avoid errors when ordering spare parts use the labels below to identify the catalogues on the back of the binder. The label contain the serial number range for which the catalogue is valid. Do like this:

1. Remove this page from the binder.
2. Cut out the LEFT label (1) and put it on THIS binders back.
3. If there is a label to the RIGHT (2), it can be used on the binder for PRECEDING issue of this catalogue.
4. Throw away this paper.

ETICHETTA POSTA SUL RACCOGLITORE

Per evitare errori quando ordinate pezzi di ricambio, usate le etichette in calce che servono ad identificare i cataloghi sul retro del raccoglitore. L'etichetta indica il numero di matricola delle macchine prese in considerazione nel catalogo.

1. Rimuovete questa pagina dal raccoglitore.
2. Ritagliate l'etichetta posta a SINISTRA (1) e ponetela sul retro DEL raccoglitore.
3. Se trovate anche un'etichetta sulla DESTRA (2), ritagliatela e ponetela sul raccoglitore relativo alla PRECEDENTE edizione del catalogo.
4. Distruggete questo foglio.

ETIQUETAGE DU CATALOGUE

Afin d'éviter des erreurs lors de commandes de pièces de rechange, nous vous conseillons d'apposer les marquages ci-dessous à l'arrière du classeur, pour identifier les catalogues. Ce marquage indique les numéros de série pour lesquels le catalogue est adapté. Il convient de procéder de la façon suivante:

1. Retirez cette page du classeur.
2. Découpez l'étiquette de GAUCHE (1), et apposez-la à l'arrière de CE catalogue.
3. Si il y a une étiquette à DROITE (2), vous pourrez l'apposer sur le classeur de l'édition PRECEDENTE du catalogue.
4. Détruire cette feuille.

1.

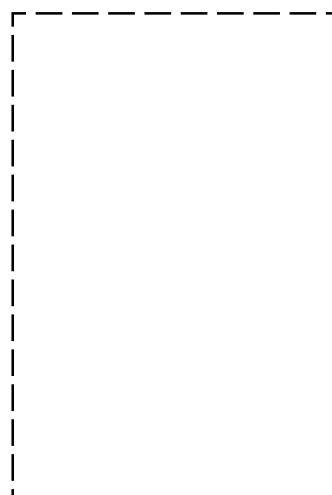
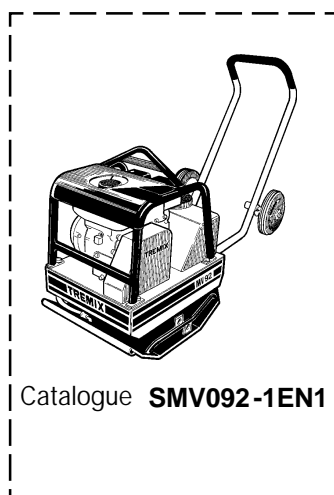
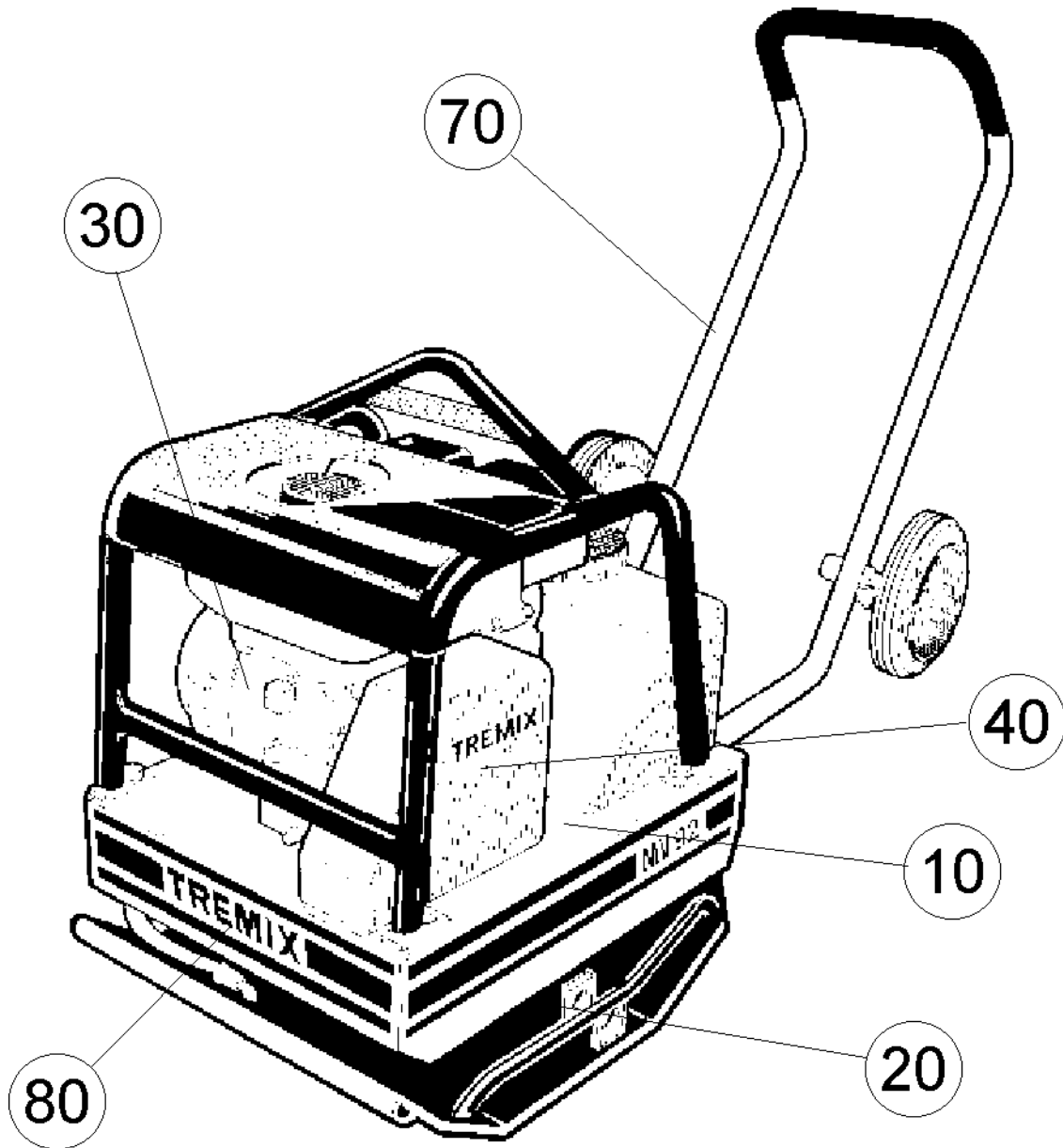


TABLE OF CONTENTS	MV92	Page
MV92		2
Ground plate and engine plate		4
Ground plate and engine plate		6
Sprinkler system		8
Eccentric element		10
Eccentric element		12
Engine		14
Engine, Honda GX120K1SX4		16
Engine installation		18
Transmission		20
Centrifugal clutch		22
Belt tightener Up to S/N 29200571		24
Handle		26
Handle		28
Decals and documentation		30
Decals and documentation		32

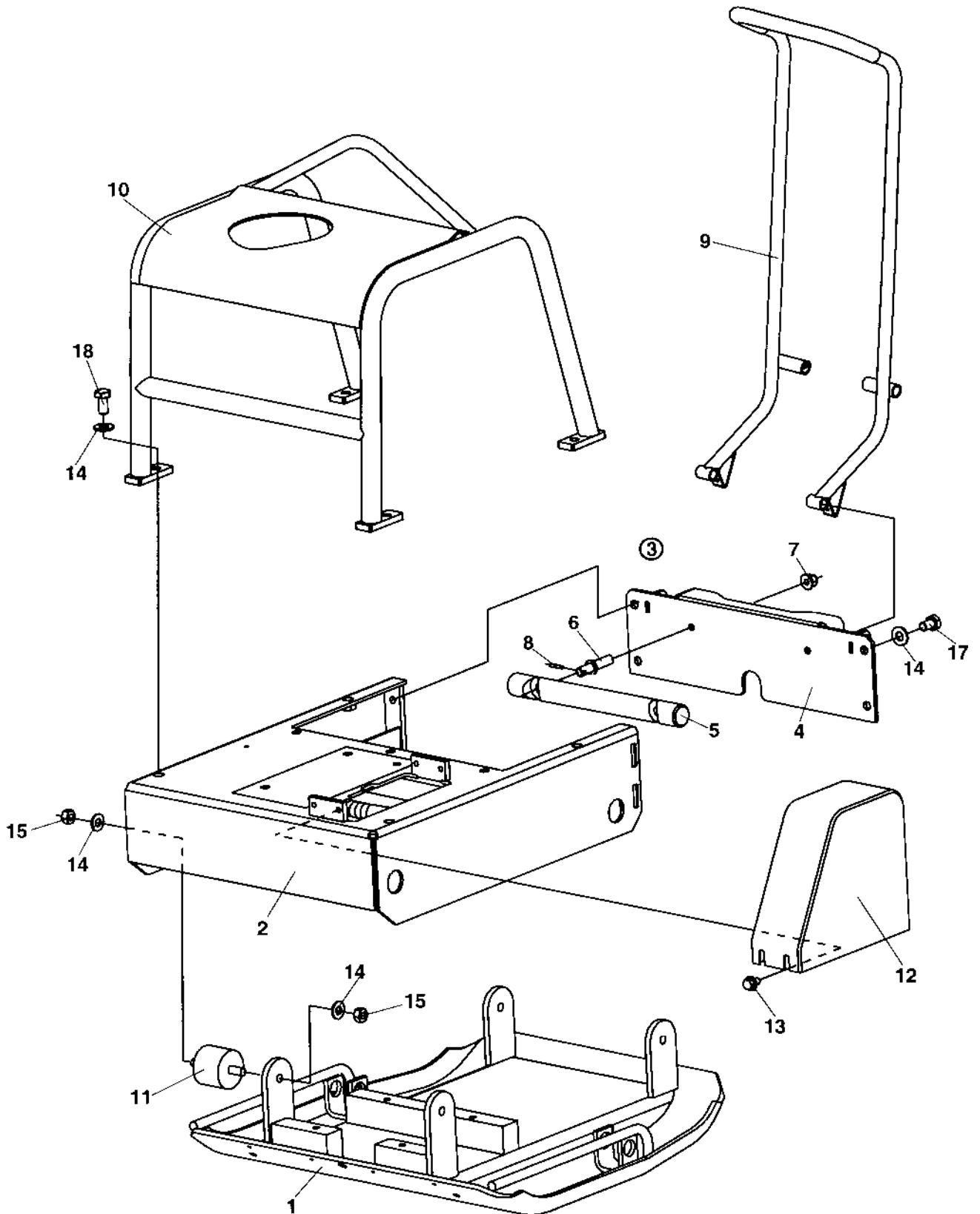


Ref. No.	Part No.	Rem.	Qty	Description	Code
10				Ground plate and engine plate (Page 4)	
20				Eccentric element (Page 10)	
30				Engine (Page 14)	
40				Transmission (Page 20)	
70				Handle (Page 26)	
80				Decals and documentation (Page 30)	



Ground plate and engine plate

Ref. No.	Part No.	Rem.	Qty	Description	Code
10				Ground plate and engine plate (Page 6)	
20				Sprinkler system (Page 8)	

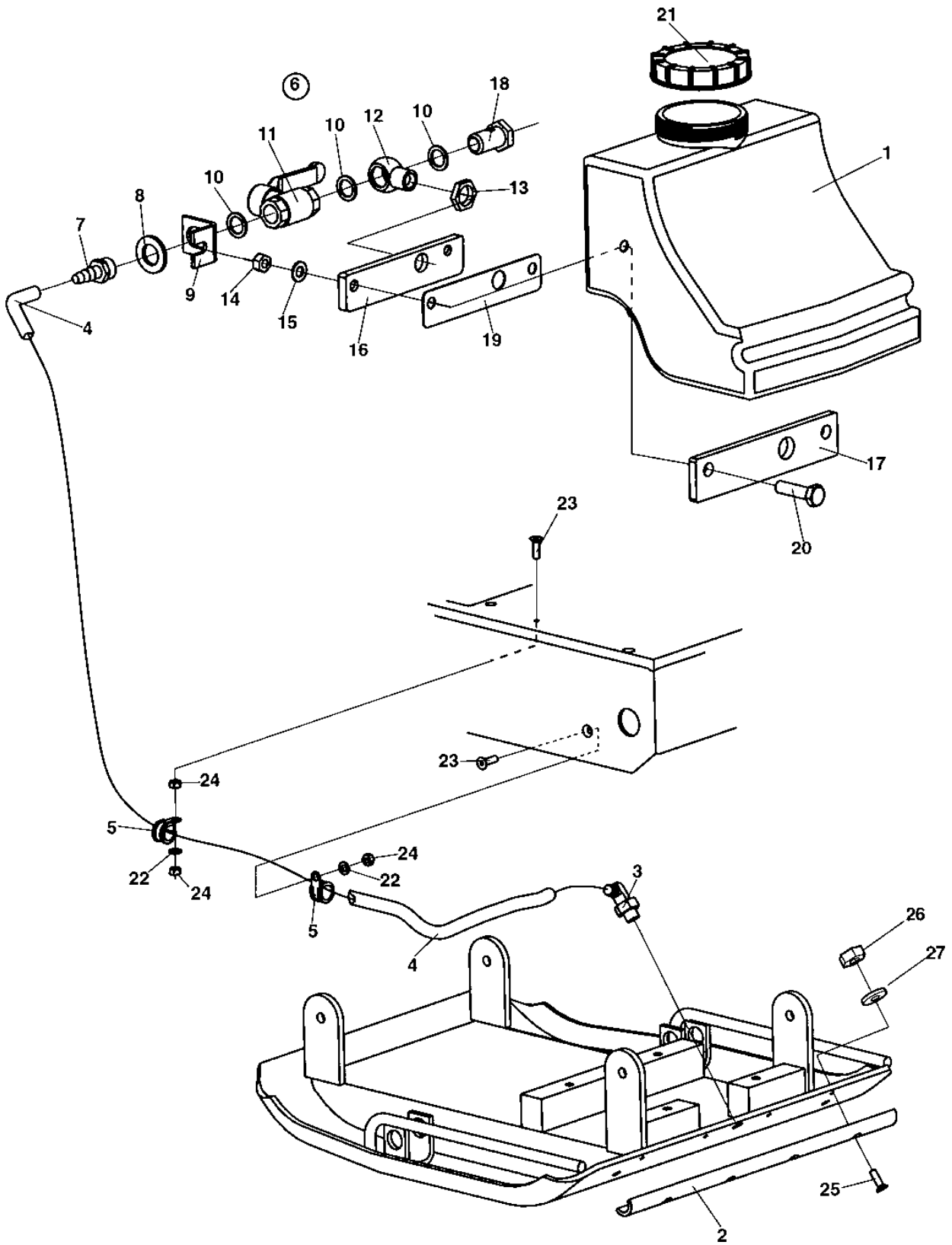


Ground plate and engine plate

Ref. No.	Part No.	Rem.	Qty	Description	Code
1	381041		1	Ground plate Up to 29200582	
	385988		1	Ground plate From 29200583	
	385149	A	1	Ground plate	
2	381042-10		1	Engine plate	
3			1	Rear cover, cpl	
4	381050-10		1	.Rear cover	
5	283150		1	.Rod	
6	283178		2	.Lock screw	
7	902287		2	.Nut	
8	924856		2	.Spirol pin	
9		B	1	Handle	
10	381135		1	Protection frame	
11	904762		4	Shock absorber	
12	381045-10		1	Belt guard	
13	904755		4	Screw	
14	904230		16	Washer 10,5x22x2	
15	570006		8	Nut M10	
17	500043		4	Screw M10x16H 8,8	
18	500048		4	Screw M10-1,5x20 8,8	

A) Option

B) See section handle

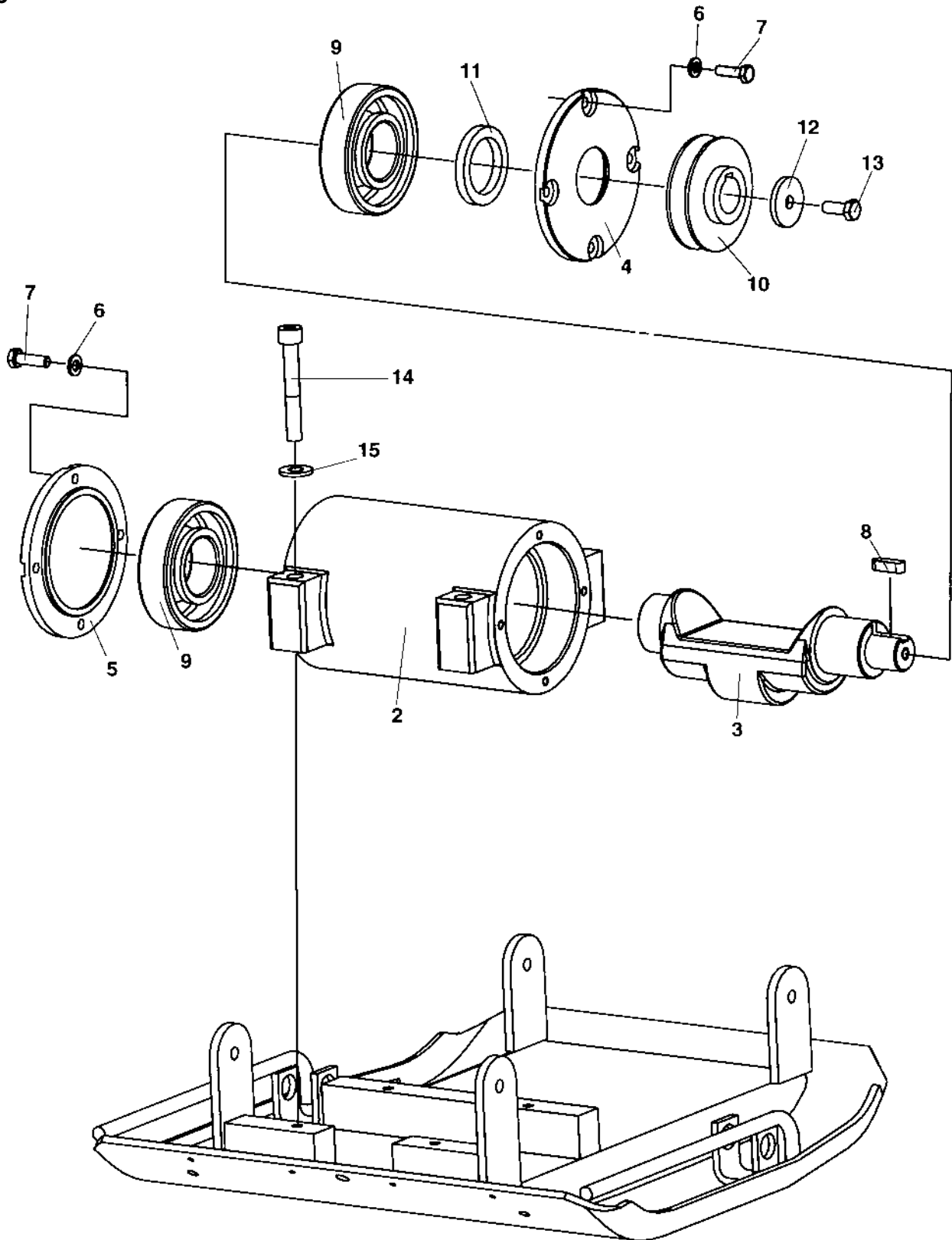


Ref. No.	Part No.	Rem.	Qty	Description	Code
1	381044		1	Sprinkling tank	
2	280173		1	Sprinkler tube	
3	902990		1	Adapter	
4	244055	A	1XL	Plastic hose	D
5	921039		2	Pipe clamp	
6			1	Holder, cpl	
7	100901518		1	.Nipple	
8	904232		1	.Washer 17x30x3	
9	381053		1	.Bracket	
10	330331		2	.Washer	
11	100901416		1	.Ball valve	
12	380499		1	.Banjo coupling	
13	232150		1	.Nut	
14	570005		2	.Nut M8	
15	904229		2	.Washer 8,4x16x1,5	
16	380498		1	.Bracket	
17	381054		1	.Bracket	
18	380500		1	.Banjo bolt	
19	381059		1	.Gasket	
20	500022		2	Screw M8-1,25x30 8,8	
21	920819		1	Filler cap	D
22	904228		2	Washer 6,4x12x1,5	
23	513017		2	Screw	
24	586002		3	Lock nut M6	
25	513017		4	Screw	
26	904639		4	Washer	
27	586002		4	Lock nut M6	

A) L=0,750m

Ref. No.	Part No.	Rem.	Qty	Description	Code
10				Eccentric element (Page 12)	

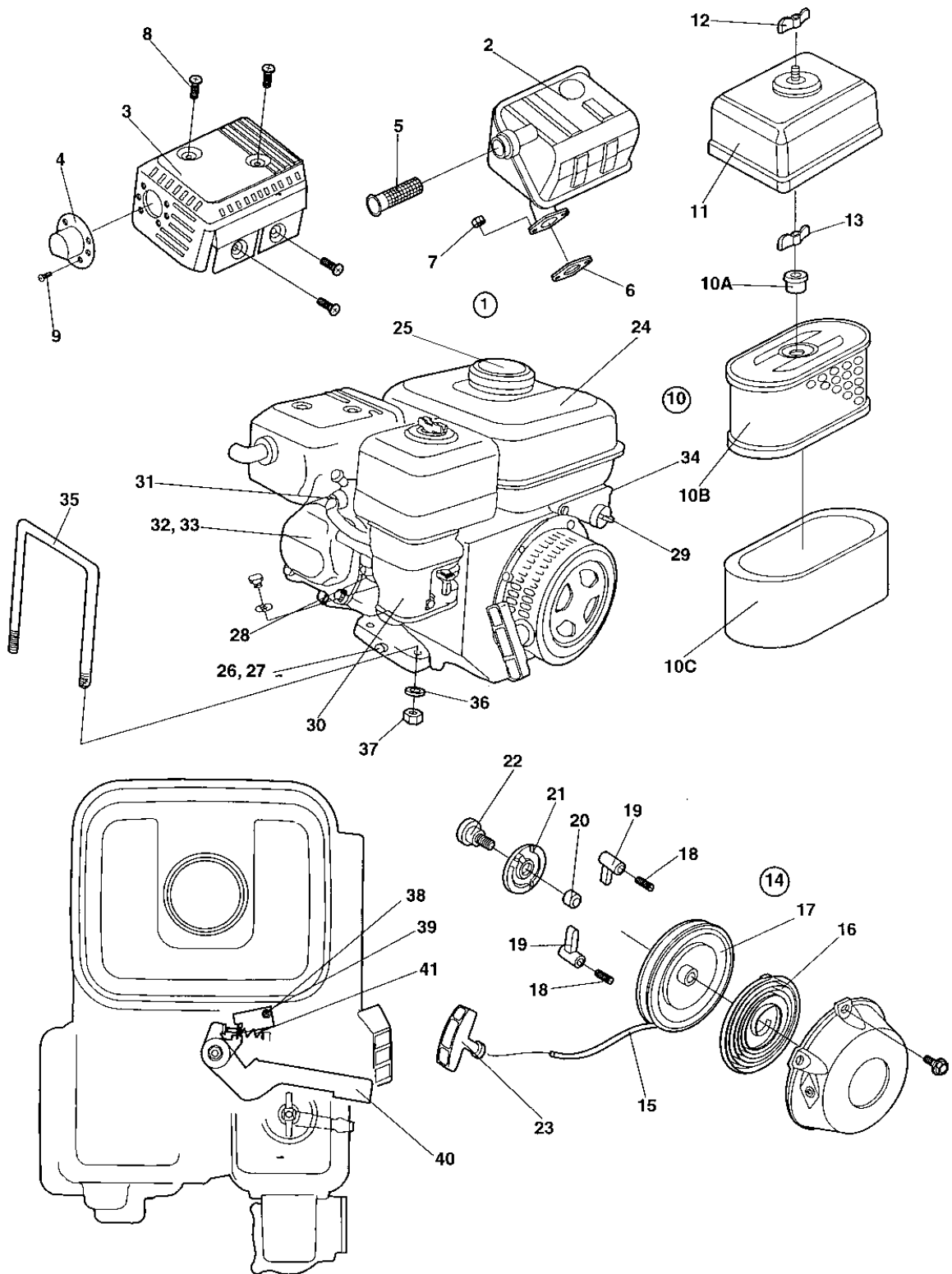
TREMIX
Eccentric element
17003



Ref. No.	Part No.	Rem.	Qty	Description	Code
1			1	Eccentric element, cpl	
2	150050801		1	.Housing	
3	381047		1	.Eccentric shaft	
4	381048		1	.Bearing cover	
5	381049		1	.Bearing cover	
6	904228		8	.Washer 6,4x12x1,5	
7	500040		8	.Screw M6-1x20 8,8	
8	350029		1	.Key	
9	902005		2	.Bearing	D
10	380418		1	.Pulley	
11	282377		1	.Sealing	
12	100502016		1	.Washer	
13	500053		1	.Screw M8-1,25x20 8,8	
14	904682		4	Screw	
15	904230		4	Washer 10,5x22x2	

Engine

Ref. No.	Part No.	Rem.	Qty	Description	Code
10				Engine, Honda GX120K1SX4 (Page 16)	
20				Engine installation (Page 18)	

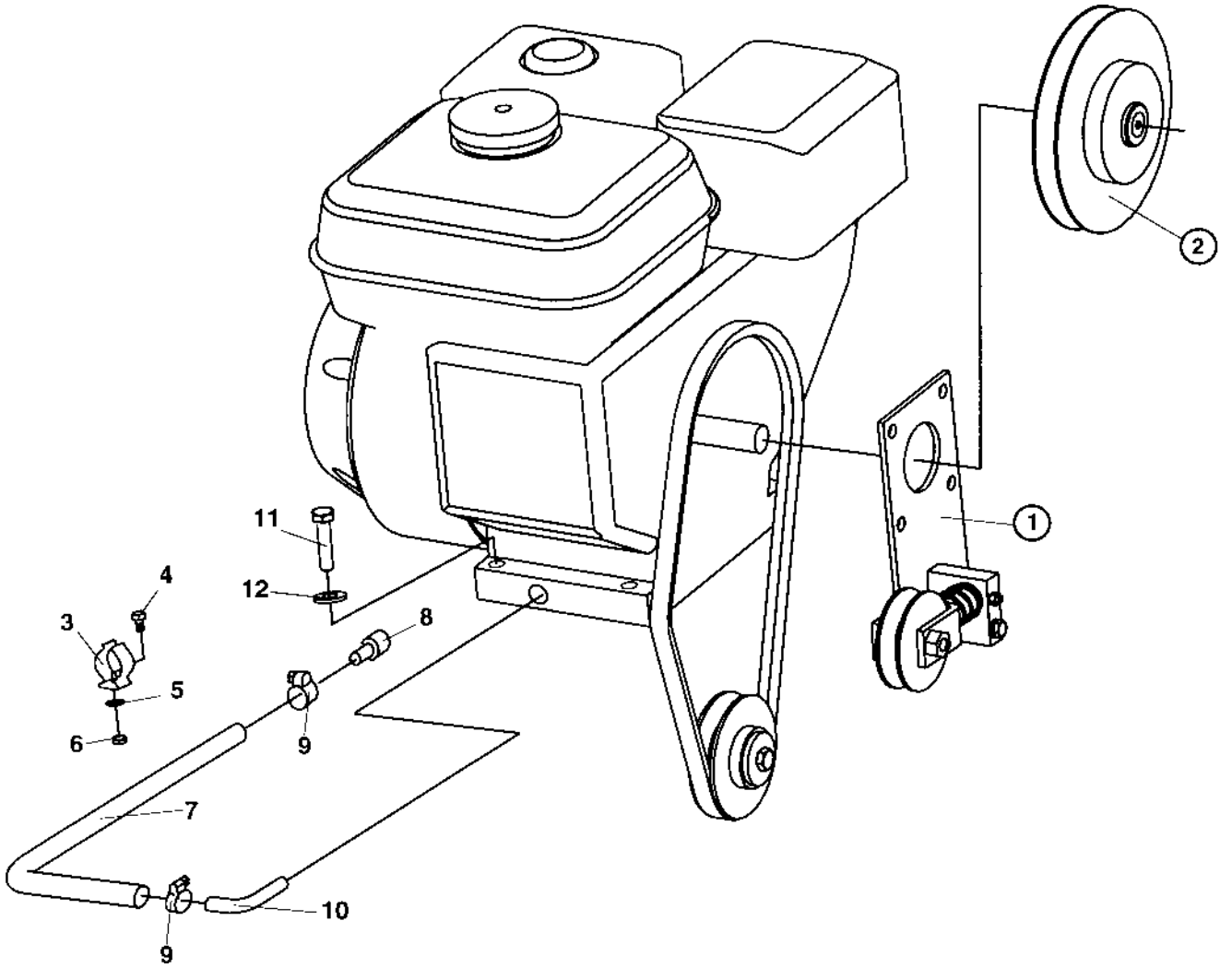


Ref. No.	Part No.	Rem.	Qty	Description	Code
1	282190		1	Engine	
2	239059		1	.Muffler	
	383031	B,C	1	Catalyser	
3	239060		1	.Muffler cover, upper	
4	239062		1	.Exhaust pipe	
5	238322		1	.Arrester, spark	
6	239063		1	.Gasket, muffler	
7	533023		2	.Screw	
8	533023		4	.Screw	
9	100900105		1	.Screw	
10	239064		1	.Air cleaner element, cpl	A
10-A	239772		1	..Grommet	
10-B			1	..Air filter	
10-C	938229		1	..Air filter, outer	
11	239685		1	.Cover	
12	238314		1	.Nut	
13	239771		1	.Nut	
14	239065		1	.Recoil starter, cpl	D
15	239374		1	..Starter rope	B
16	239375		1	..Spring	B
17	239376		1	..Reel	
18	239377		1	..Spring	
19	239378		2	..Ratchet	
20	239379		2	..Friction spring	
21	239380		1	..Guide	
22	239381		1	..Screw	
23	239391		1	..Handle	B
24	239066		1	.Fuel tank	
25	239324		1	..Fuel tank cap	D
26	239682		2	.Plug	D
27	238303		2	.Gasket	D
28	238306		1	.Oil plug	D
29	238298		1	.Stop button	
30	239061		1	.Carburettor	
31	924842		1	.Spark plug	
32	238301		1	.Gasket	D
33	239854		1	.Gasket	D
34	239680		1	.Oil alert sensor	
35				Not used on this model	
36		A	1	Washer	
37		A	1	Nut	
38	382111		1	.Lock washer	
39	508073		1	.Screw	
40	382714		1	.Throttle control arm	
41	282371		1	.Spring	

A) See section engine installation

B) Option

C) Replacable with muffler



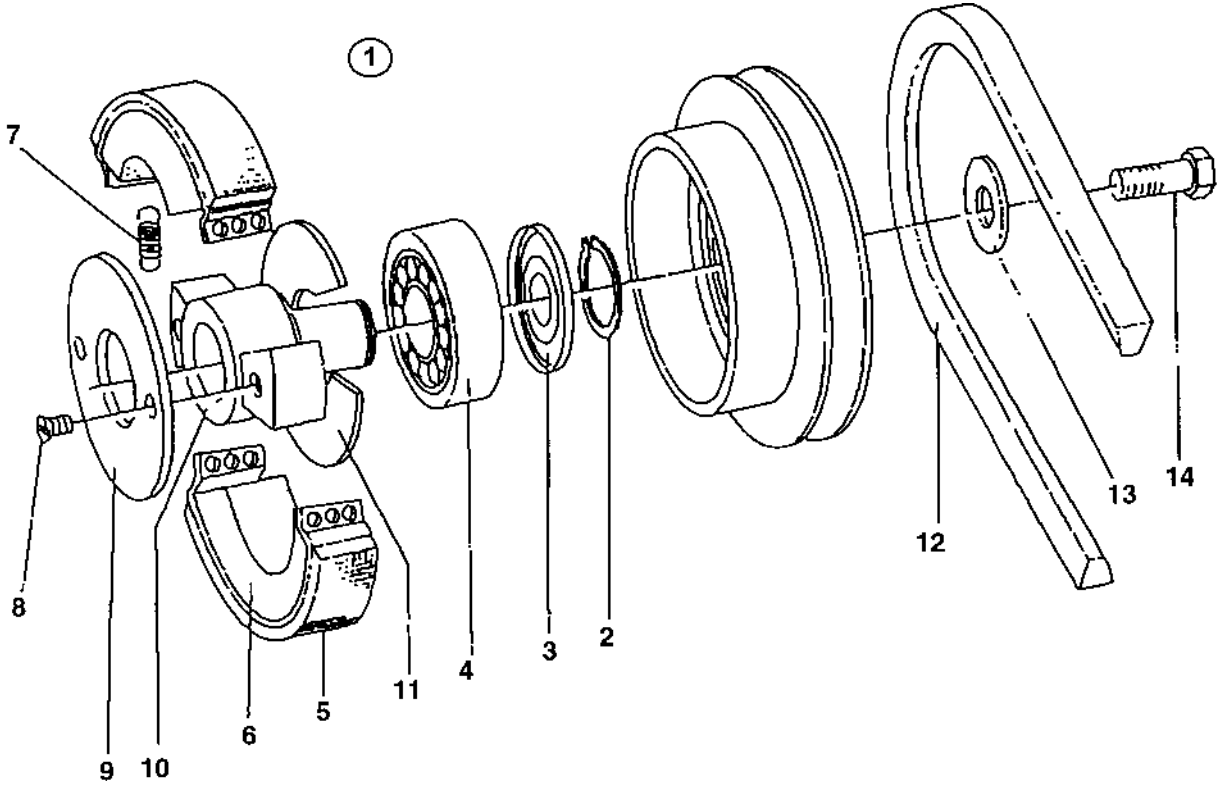
Ref. No.	Part No.	Rem.	Qty	Description	Code
1		A,C	1	Belt tightener Up to 29200570	
		B	1	Centrifugal clutch	
3	281234		1	Ryw-clips	
4	903386	A	1	Screw	
	281115		1	Screw	
5	904698	A	1	Washer 4,3x8x0,8	
6	570002	A	1	Nut M4	
7	100901382		1	Hose	
8	100504609		1	Plug	
9	313001		2	Hose clamp	
10	381057		1	Connector	
11	500047		4	Screw M8-1,25x35 8,8	
12	904229		4	Washer 8,4x16x1,5	

A) Used in old model

B) See section centrifugal clutch

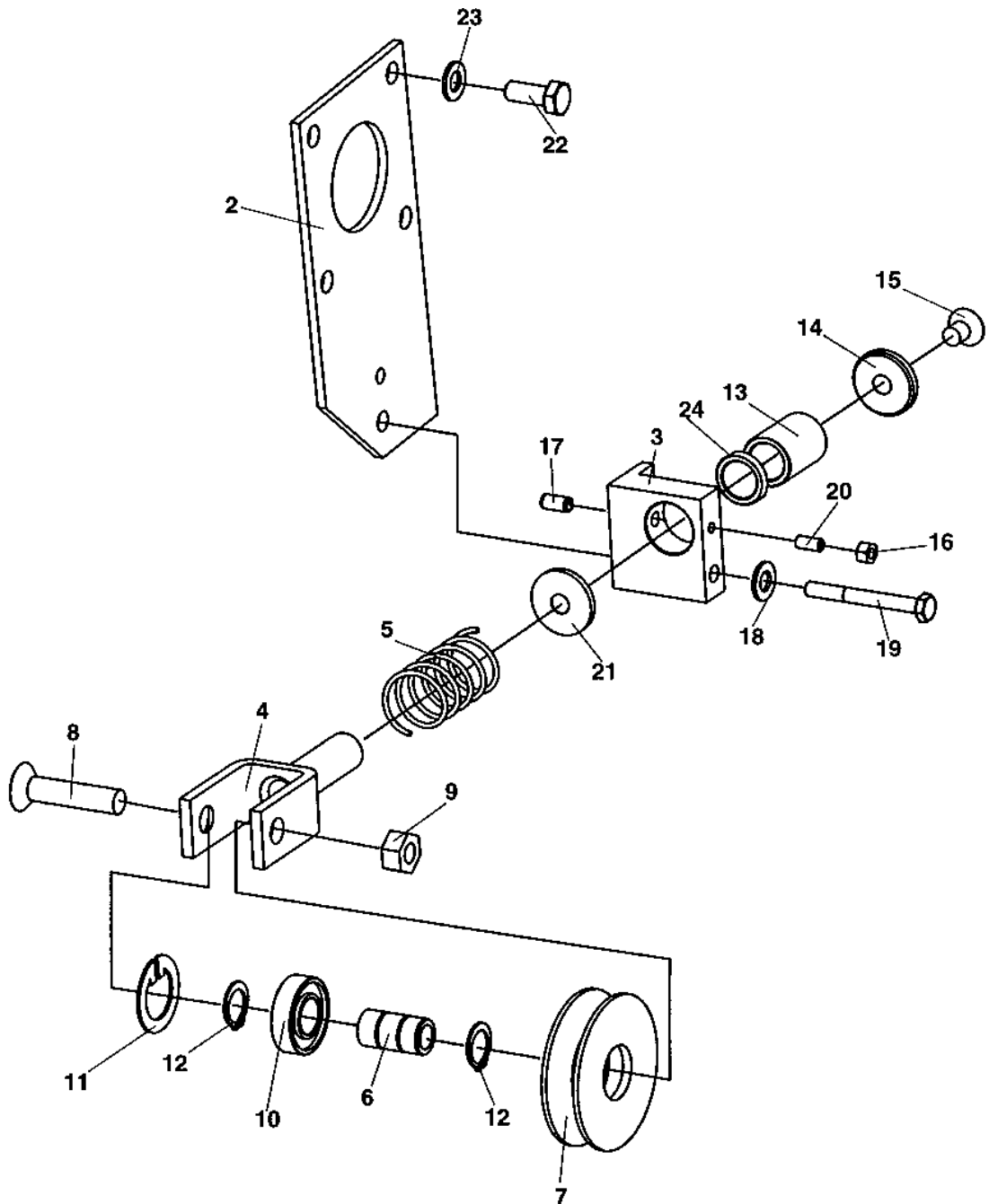
C) See section belt tightener

Ref. No.	Part No.	Rem.	Qty	Description	Code
10				Centrifugal clutch (Page 22)	D
20				Belt tightener Up to S/N 29200571 (Page 24)	



Centrifugal clutch

Ref. No.	Part No.	Rem.	Qty	Description	Code
1	282076		1	Centrifugal clutch	D
2	935635		1	.Retaining ring	
3	935636		1	.Nilos ring	
4	111183		1	.Ball bearing	D
5	929360		2	.Clutch lining	B
6	239290		2	.Weight	D
7	912498		2	.Spring	D
8	935638		4	.Screw	
9	912480		1	.Cover	
10	935637		1	.Hub	
11	912479		1	.Cover	
12	380504		1	V-belt Up to 29200570	
	929071		1	V-belt From 29200571	
13	100501029		1	Washer	
14	513003		1	Screw	

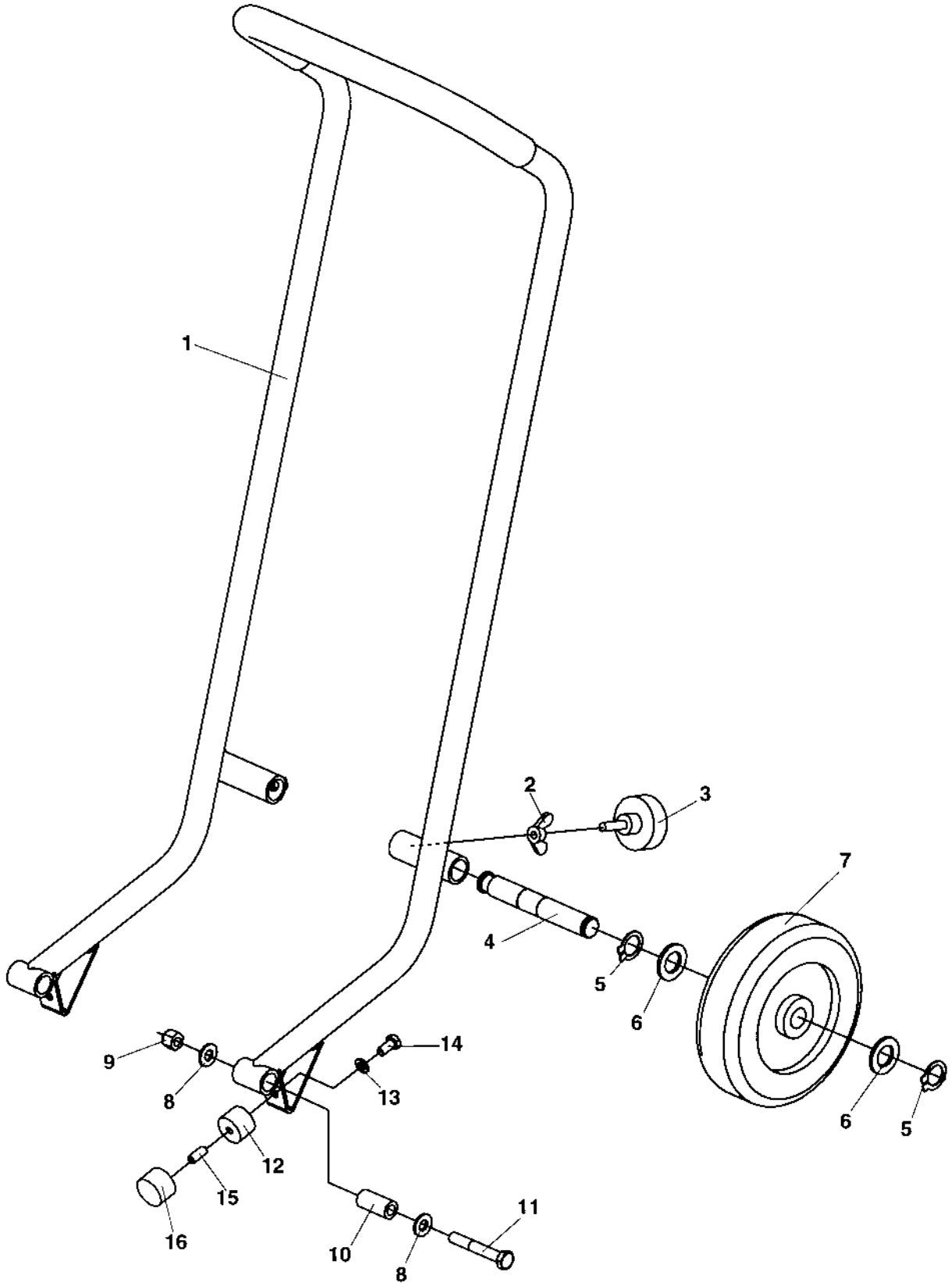


Ref. No.	Part No.	Rem.	Qty	Description	Code
1			1	Belt tightener	
2	381774		1	.Bracket	
3	381772		1	.Sleeve Up to 29200400	
	383003		1	.Sleeve From 29200401	
4	381052		1	.Fork	
5	904804		1	.Spring	
6	283179		1	.Shaft	
7	282638		1	.V-belt pulley	
8	513023		1	.Screw	
9	928847		1	.Nut	
10	903815		1	.Ball bearing	D
11	151035		1	.Snap ring	
12	150004		2	.Retainer ring	
13	380501		1	.Sleeve bearing	
14	100501029		1	.Washer	
15	929164		1	.Screw	
16	516011		1	.Screw	
17	629066		1	.Spirol pin	
18	904229		1	.Washer 8,4x16x1,5	
19	500067		1	.Screw	
20	570004		1	.Nut M6	
21	381412		1	.Spacer ring Up to 29200400	
22	500053		4	Screw M8-1,25x20 8,8	
23	904229		4	Washer 8,4x16x1,5	
24	160080		1	.O-ring From 29200401	



Handle

Ref. No.	Part No.	Rem.	Qty	Description	Code
10				Handle (Page 28)	



Handle

Ref. No.	Part No.	Rem.	Qty	Description	Code
1	381043		1	Handle	
2	582007		2	Wing nut	
3	282209		2	Knob	
4	282203		2	Shaft	
5	150008		4	Snap ring	
6	904233		6	Washer 21x36x3	
7	282213		2	Wheel	D
8	904230		4	Washer 10,5x22x2	
9	586018		2	Lock nut M10	
10	282594		2	Plain bearing	
11	500109		2	Screw M10-1,5x65 8,8	
12	281392		2	Stud	
13	904229		2	Washer 8,4x16x1,5	
14	500018		2	Screw M8X12	
15	516013		2	Set screw	
16	282152		2	Shock absorber	B



Decals and documentation

Ref. No.	Part No.	Rem.	Qty	Description	Code
10				Decals and documentation (Page 32)	

Decals and documentation

Ref. No.	Part No.	Rem.	Qty	Description	Code
1	100504810	A	1	Identification plate	
	385135SE		1	Identification plate	
2	527002		1	Drive screw	
3	100500556		1	Decal "WATER ON/OFF"	
4	380502		3	Decal, model code	
5	380503		1	Decal, model code	
6	100501276		1	Decal, Tremix	
7	100501275		1	Decal, Tremix	
8	281898		1	Decal, ear protection	
9	904680		1	Decal "Read instruction manual"	
10	281269		2	Decal "LIFT"	
11	903832		1	Safety decal	
12			1	Documentation	
			1	.Instruction book, engine	
			1	.Operation IMV092	
			1	.Spare parts catalogue SMV092	

A) Old version

NUMERICAL INDEX

Part Number	Page	Part Number	Page	Part Number	Page
100500556	33	380502	33	924842	17
100501029	23,25	380503	33	924856	7
100501275	33	380504	23	928847	25
100501276	33	381041	7	929071	23
100502016	13	381042-10	7	929164	25
100504609	19	381043	29	929360	23
100504810	33	381044	9	935635	23
100900105	17	381045-10	7	935636	23
100901382	19	381047	13	935637	23
100901416	9	381048	13	935638	23
100901518	9	381049	13	938229	17
111183	23	381050-10	7		
150004	25	381052	25		
150008	29	381053	9		
150050801	13	381054	9		
151035	25	381057	19		
160080	25	381059	9		
232150	9	381135	7		
238298	17	381412	25		
238301	17	381772	25		
238303	17	381774	25		
238306	17	382111	17		
238314	17	382714	17		
238322	17	383003	25		
239059	17	383031	17		
239060	17	385135SE	33		
239061	17	385149	7		
239062	17	385988	7		
239063	17	500018	29		
239064	17	500022	9		
239065	17	500040	13		
239066	17	500043	7		
239290	23	500047	19		
239324	17	500048	7		
239374	17	500053	13,25		
239375	17	500067	25		
239376	17	500109	29		
239377	17	508073	17		
239378	17	513003	23		
239379	17	513017	9		
239380	17	513023	25		
239381	17	516011	25		
239391	17	516013	29		
239680	17	527002	33		
239682	17	533023	17		
239685	17	570002	19		
239771	17	570004	25		
239772	17	570005	9		
239854	17	570006	7		
244055	9	582007	29		
280173	9	586002	9		
281115	19	586018	29		
281234	19	629066	25		
281269	33	902005	13		
281392	29	902287	7		
281898	33	902990	9		
282076	23	903386	19		
282152	29	903815	25		
282190	17	903832	33		
282203	29	904228	9,13		
282209	29	904229	9,19,25		
282213	29		,29		
282371	17	904230	7,13,29		
282377	13	904232	9		
282594	29	904233	29		
282638	25	904639	9		
283150	7	904680	33		
283178	7	904682	13		
283179	25	904698	19		
313001	19	904755	7		
330331	9	904762	7		
350029	13	904804	25		
380418	13	912479	23		
380498	9	912480	23		
380499	9	912498	23		
380500	9	920819	9		
380501	25	921039	9		

