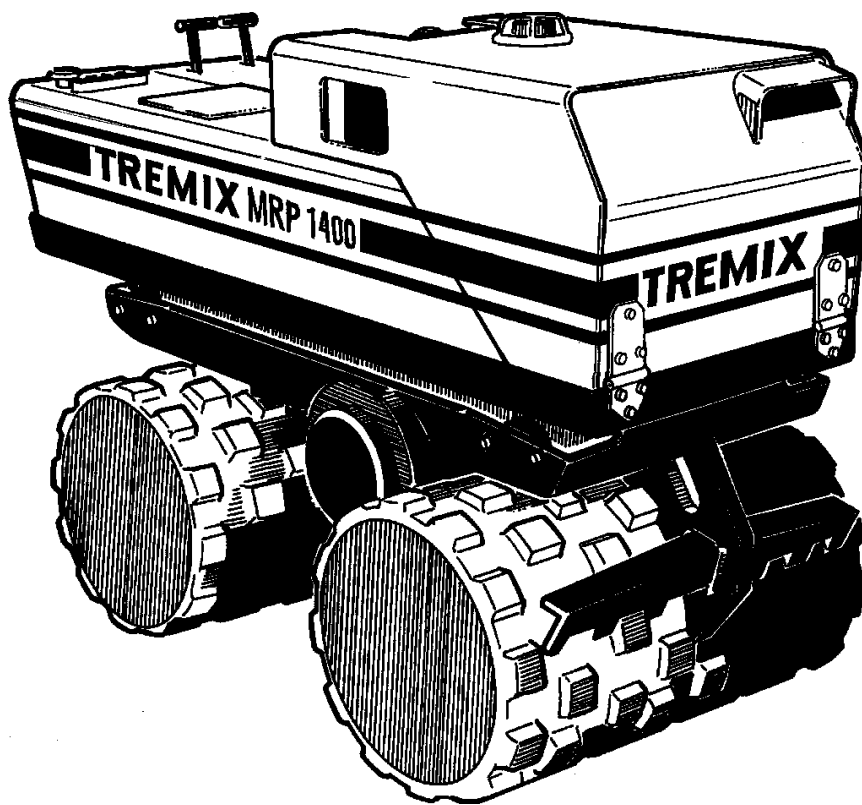


**TREMIX**  
**Trench Compactor**  
**MRP1400**  
**SPARE PARTS**  
**CATALOGUE**  
**SMRP1400-1EN1**



**TREMIX<sup>®</sup>**

Metso Construction Equipment AB  
Stensättravägen 9, Box226  
SE- 127 24 Skärholmen, Sweden  
Tel: +46 8 603 32 00    Telefax: +46 8 646 72 61



## Trench Compactor MRP 1400 Spare Parts Catalogue

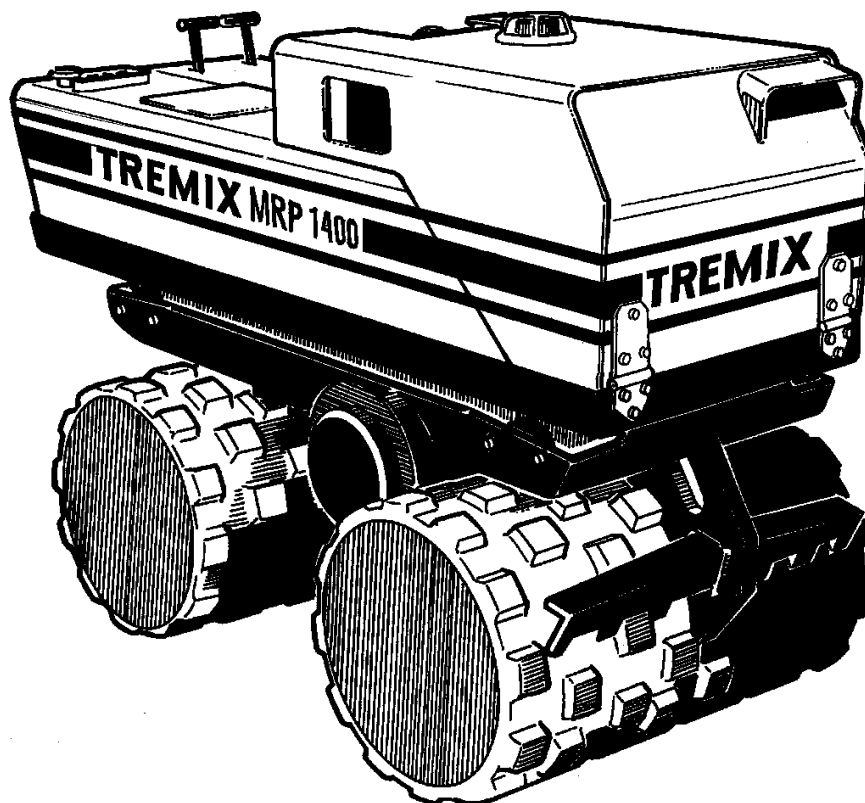
### SMRP1400-1EN1

*Engines:*

*Hatz 2G40*

*Published catalogue issues valid for these compactors:*

<i>Catalogue</i>	<i>Issue date</i>
<i>SMRP14000-1EN0</i>	<i>2003-02</i>



## RESERVDLSBESTÄLLNING

Följande uppgifter ska lämnas vid beställning av reservdelar för att undvika leveransfel:

1. Maskintyp.
2. Vältensserienummer.
3. Antal av önskad reservdel.
4. Reserdelens artikelnummer.
5. Reservdelens benämning.
6. Måttuppgifter vid beställning av metervara.

## ERSATZTEILBESTELLUNG

Zur Vermeidung von Fehllieferungen sind bei der Bestellung von Ersatzteilen folgende Angaben zu machen:

1. Maschinentyp.
2. Herstellungsnummer.
3. Bestellmenge. (Quantity)
4. Ersatzteilnummer. (Part N°)
5. Ersatzteilbenennung. (Denomination)
6. Massangaben bei Bestellung von Meterware.

## PEDIDO DE RECAMBIOS

Para evitar errores en las entregas, deberán indicarse los siguientes datos al hacer un pedido de recambios:

1. Tipo de máquina.
2. Número de serie.
3. Cantidad de piezas deseadas. (Quantity)
4. Número de artículo de la pieza de recambio. (Part N°)
5. Denominación de la pieza. (Denomination)
6. Indíquese la medida al solicitar un artículo que se expide por metros.

## ORDERING SPARE PARTS

To avoid errors in delivery, please give the following information when ordering spare parts:

1. Type of machine.
2. Roller serial number.
3. Quantity required.
4. Part number.
5. Parts denomination.
6. Dimensions when ordering per length.

## ORDINI DI RICAMBI

Per evitare errori nelle consegne di ricambi, Vi preghiamo di comunicarci le seguenti informazioni al momento dell'ordinazione:

1. Tipo di macchina.
2. Numero di serie della macchina.
3. Quantità dei pezzi desiderati. (Quantity)
4. Numero di codice del pezzo. (Part N°)
5. Descrizione del pezzo di ricambio. (Denomination)
6. Misura, in caso di ordine per metro.

## COMMANDE DE PIÈCES DE RECHANGE

Les indications suivantes doivent être fournies lors de la commande de pièces de rechange, afin d'éviter toute erreur de livraison:

1. Type de machine.
2. Numéro de série.
3. Quantité désirée de pièce de rechange. (Quantity)
4. Numéro de la pièce de rechange. (Part N°)
5. Dénomination de la pièce de rechange. (Denomination)
6. Longueur en cas de commande au mètre.

**YOUR AGENT/DEALER:**





## PÄRMETIKETT

För att undvika fel vid reservdelsbeställning finns här nedan två etiketter som passar i fickorna på pärmarnas ryggar. På dessa kan man se från vilket vältnummer av aktuell maskin reservdelskatalogen gäller. Gör så här:

1. Tag denna sida ur pärmen.
2. Klipp ut etiketten till **VÄNSTER** (1) och sätt in den i fickan på **DENNA** pärmens rygg.
3. Finns det en etikett till **HÖGER** (2), kan denna användas på pärmen för **FÖREGÅENDE** utgåva av denna katalog.
4. Kasta detta papper.

## KATALOG-BESCHRIFTUNG

Zur Vermeidung von Fehlern bei der Ersatzteilbestellung benutzen Sie bitte die unteren Beschriftungen, um die Kataloge auf der Rückseite zu kennzeichnen. Auf der Beschriftung ist angegeben, für welche Maschinennummern der jeweilige Katalog gültig ist. Ablauf:

1. Nehmen Sie dieses Blatt aus dem Katalog.
2. Schneiden Sie die **LINKE** Beschriftung (1) aus. Schieben Sie die Beschriftung in die tasche auf **DEM** Katalogrücke.
3. Sollte die Beschriftung unten **RECHTS** (2) mitgeliefert werden, kennzeichnen Sie damit bitte die **ÄLTERE** Ausführung dieses Kataloges.
4. Den Rest dieses Blattes bitte vernichten.

## ETIQUETA PARA LA CARPETA

Para evitar errores al pedir repuestos utilicen las etiquetas abajo descritas para identificar los catálogos en la parte trasera de la carpeta. En la etiqueta se ven los números de referencia de la serie para la cual es válido el catálogo. Instrucciones:

1. Quitar esta página de la carpeta.
2. Corta la etiqueta **IZQUIERDA** (1) y ponerla est **ESTA** carpeta en la parte trasera.
3. Si hay una etiqueta en la parte **DERECHA** (2) se puede utilizar en la carpeta para el catálogo que **PRECEDE** a esta.
4. Tirar esta hoja.

## BINDER LABEL

To avoid errors when ordering spare parts use the labels below to identify the catalogues on the back of the binder. The label contain the serial number range for which the catalogue is valid. Do like this:

1. Remove this page from the binder.
2. Cut out the **LEFT** label (1) and put it on **THIS** binders back.
3. If there is a label to the **RIGHT** (2), it can be used on the binder for **PRECEDING** issue of this catalogue.
4. Throw away this paper.

## ETICHETTAPOSTASULRACCOGLITORE

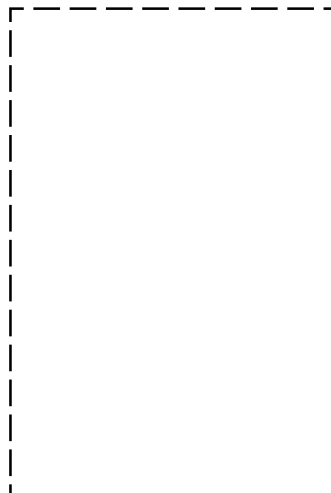
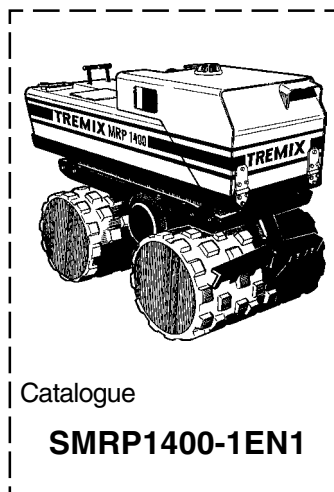
Per evitare errori quando ordinate pezzi di ricambio, usate le etichette in calce che servono ad identificare i cataloghi sul retro del raccoglitore. L'etichetta indica il numero di matricola delle macchine prese in considerazione nel catalogo.

1. Rimuovete questa pagina dal raccoglitore.
2. Ritagliate l'etichetta posta a **SINISTRA** (1) e ponetela sul retro **DEL** raccoglitore.
3. Se trovate anche un'etichetta sulla **DESTRA** (2), ritagliatela e ponetela sul raccoglitore relativo alla **PRECEDENTE** edizione del catalogo.
4. Distruggete questo foglio.

## ETIQUETAGE DU CATALOGUE

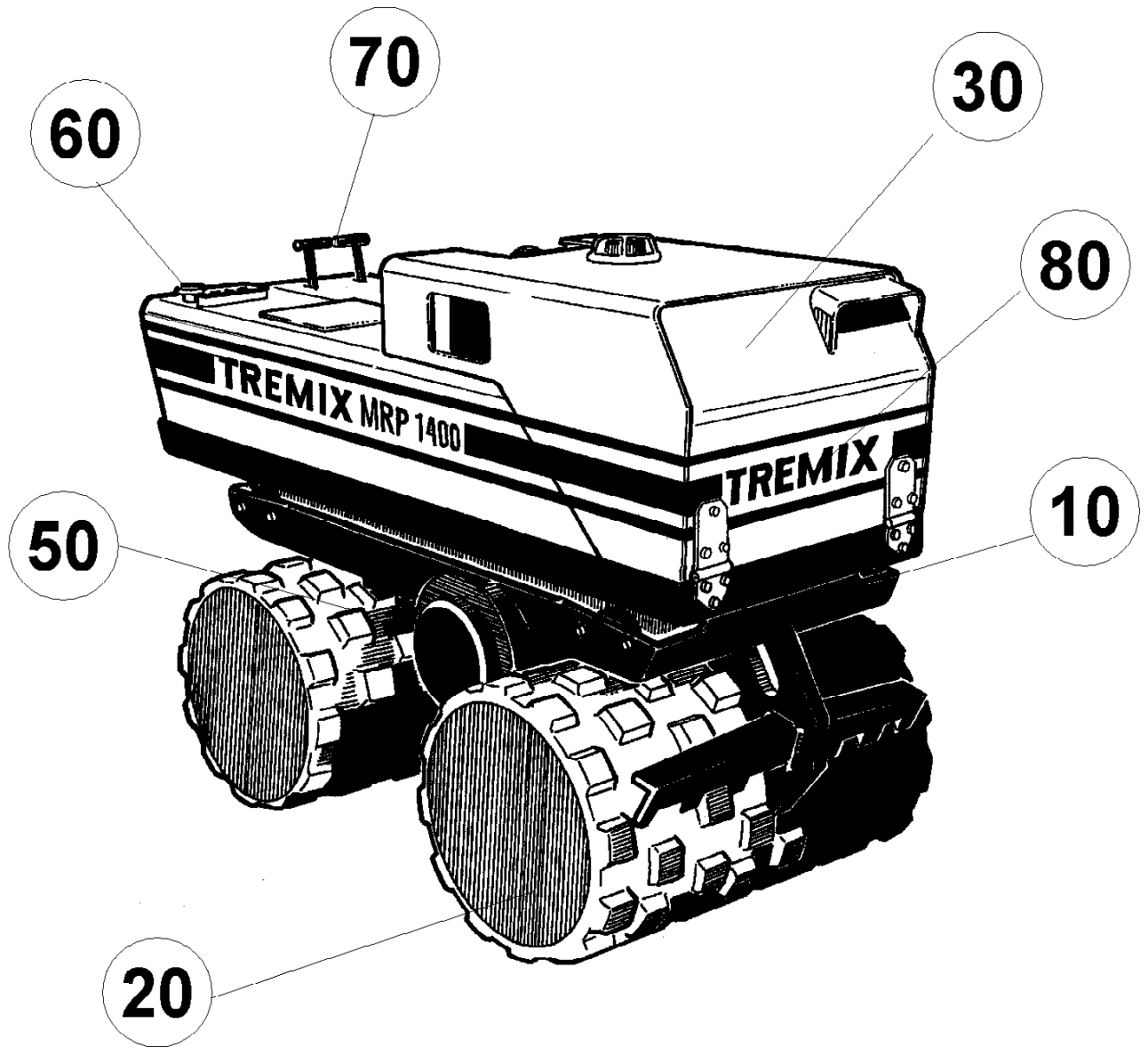
Afin d'éviter des erreurs lors de commandes de pièces de rechange, nous vous conseillons d'apposer les marquages ci-dessous à l'arrière du classeur, pour identifier les catalogues. Ce marquage indique les numéros de série pour lesquels le catalogue est adapté. Il convient de procéder de la façon suivante:

1. Retirez cette page du classeur.
2. Découpez l'étiquette de **GAUCHE** (1), et apposez-la à l'arrière de **CE** catalogue.
3. Si il y a une étiquette à **DROITE** (2), vous pourrez l'apposer sur le classeur de l'edition **PRECEDENTE** du catalogue.
4. Détruire cetta feuille.





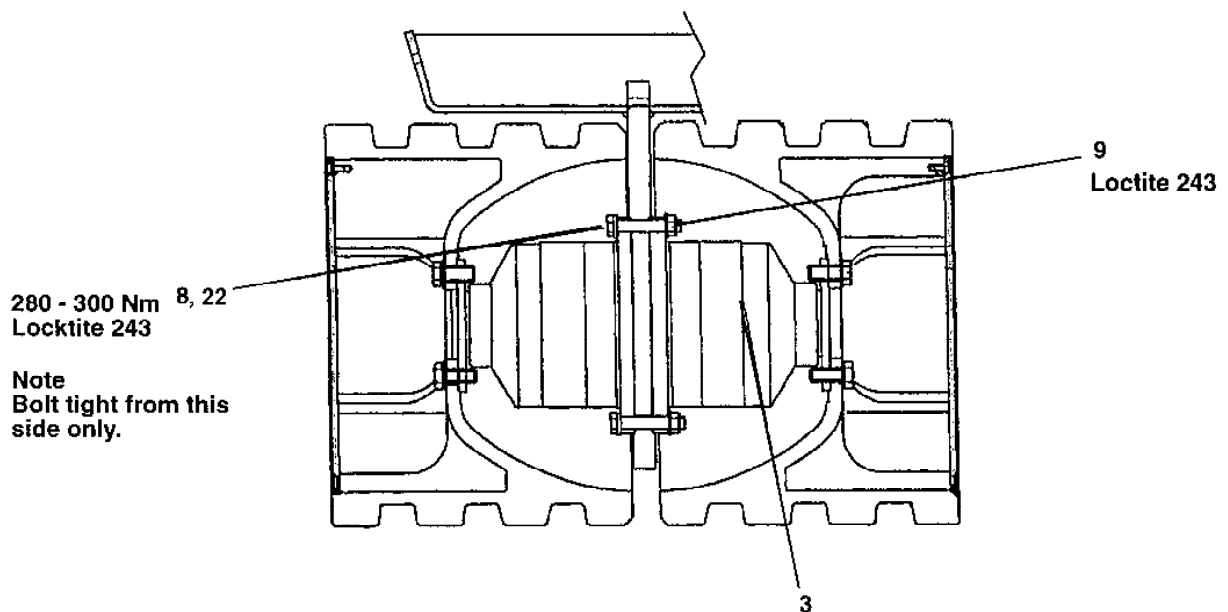
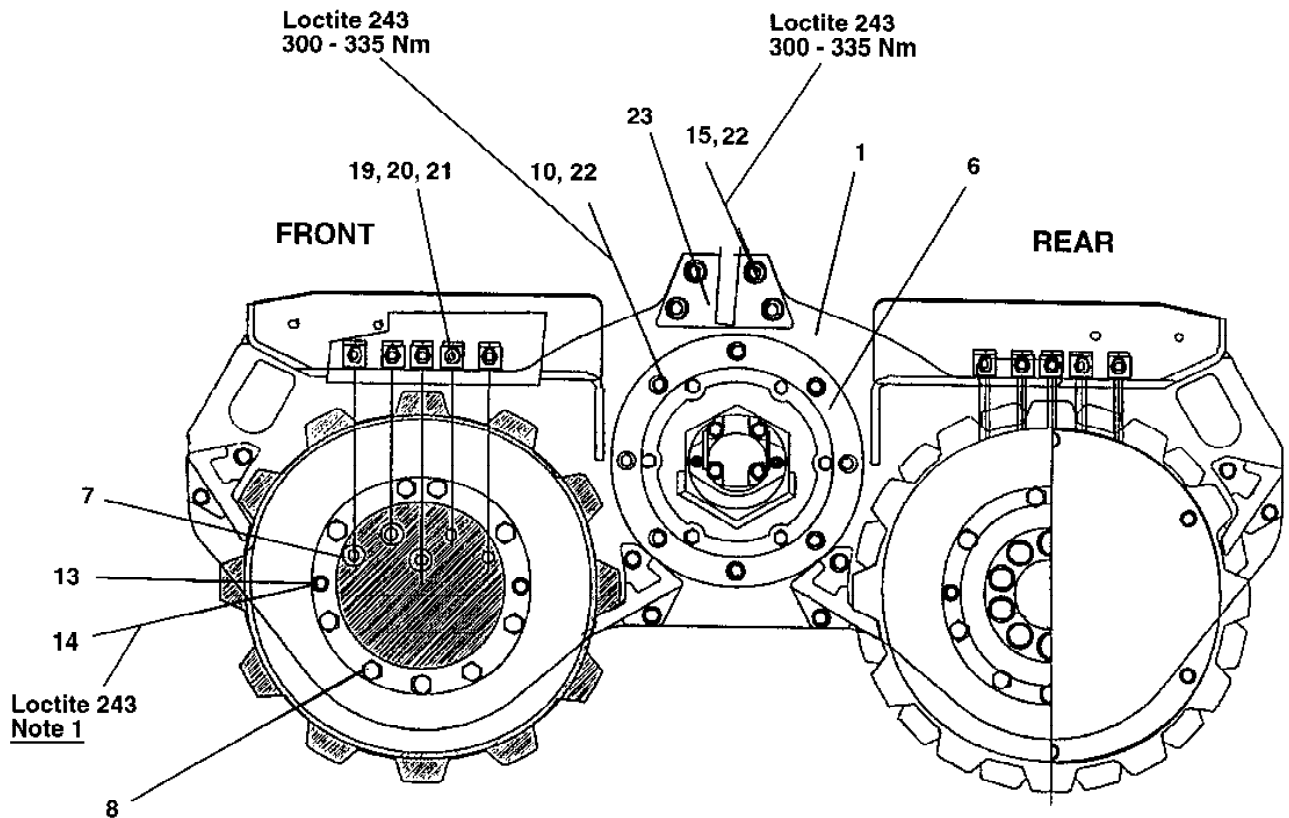
<b>MRP1400D From S/N 48610210</b> .....	<b>2</b>
<b>Frame</b> .....	<b>4</b>
Lower part, cpl .....	6
Engine hood, cpl .....	8
Service cover, cpl .....	10
Noise suppression .....	12
Frame .....	14
Hydraulic oil tank .....	16
Fuel tank .....	18
<b>Drums and eccentric element</b> .....	<b>20</b>
Drum, cpl .....	22
Welded scrapers .....	24
Eccentric element .....	26
<b>Engine</b> .....	<b>28</b>
Engine .....	30
Exhaust system .....	32
Air inlet system .....	34
Fuel system .....	36
Plate air inlet .....	38
<b>Hydraulic system</b> .....	<b>40</b>
Hydraulic system, upper part .....	42
Hydraulic system, lower part .....	46
288348   Wheel motor .....	48
Hydraulic pump installation .....	50
Hydraulic valve .....	52
<b>Electric equipment</b> .....	<b>54</b>
Electrical equipment Up to S/N 48610101 .....	56
Electrical equipment From S/N 48610102 .....	58
Electrical cables .....	60
Electrical cables .....	62
Cable control .....	64
IR-transmitter .....	66
IR-receiver .....	68
<b>Handle and controls</b> .....	<b>70</b>
Push stop, cpl .....	72
Throttle control .....	74
Parking brake .....	76
<b>Decals and equipment</b> .....	<b>78</b>
Decals and documentation .....	80



Ref. No.	Part No.	Rem.	Qty	Description	Code
10				Frame ( Page 4 )	
20				Drums and eccentric element ( Page 20 )	
30				Engine ( Page 28 )	
50				Hydraulic system ( Page 40 )	
60				Electric equipment ( Page 54 )	
70				Handle and controls ( Page 70 )	
80				Decals and equipment ( Page 78 )	



Ref. No.	Part No.	Rem.	Qty	Description	Code
10				Lower part, cpl ( Page 6 )	
20				Engine hood, cpl ( Page 8 )	
30				Service cover, cpl ( Page 10 )	
40				Noise suppression ( Page 12 )	
50				Frame ( Page 14 )	
60				Hydraulic oil tank ( Page 16 )	
70				Fuel tank ( Page 18 )	



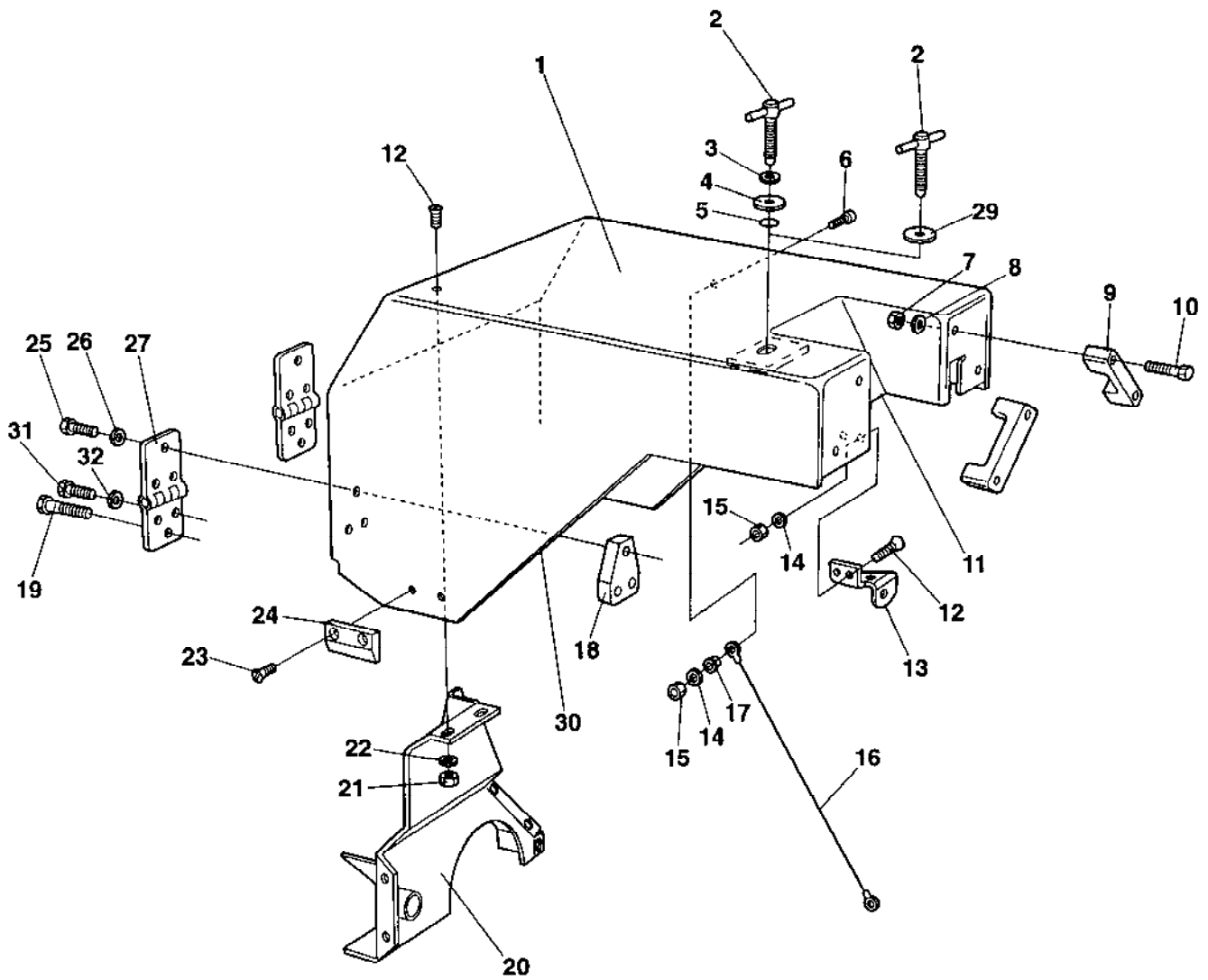
**Note 1** When assembling of wheelmotors check condition of o-ring and lubricate them. Fasten the wheelmotor with bolt 14 and washer 13 on both side. Then fix with the bolts 8 and nut 9 and tight to final torque 280 Nm in a star pattern.

Ref. No.	Part No.	Rem.	Qty	Description	Code
1	288012		1	Frame	
3		C	4	Wheel motor	
6		B	1	Eccentric element	
7	160009		12	O-ring	D
8	924762		18	Screw	
9	286196		18	Nut	
10	928444		8	Screw	
13	904230		8	Washer 10,5x22x2	
14	500029		8	Screw M10-1,5x30 8,8	
15	928444		4	Screw	
19	286197	A	10	Adapter	
20	239832	A	10	Nut	
21	239833	A	10	.Clamping sleeve	
22	904232		30	Washer 17x30x3	
23	288339		1	Lifting eye	

A) Old design

B) See section drums and eccentric element

C) See section wheel motor



**TREMIX®**  
**Engine hood, cpl**

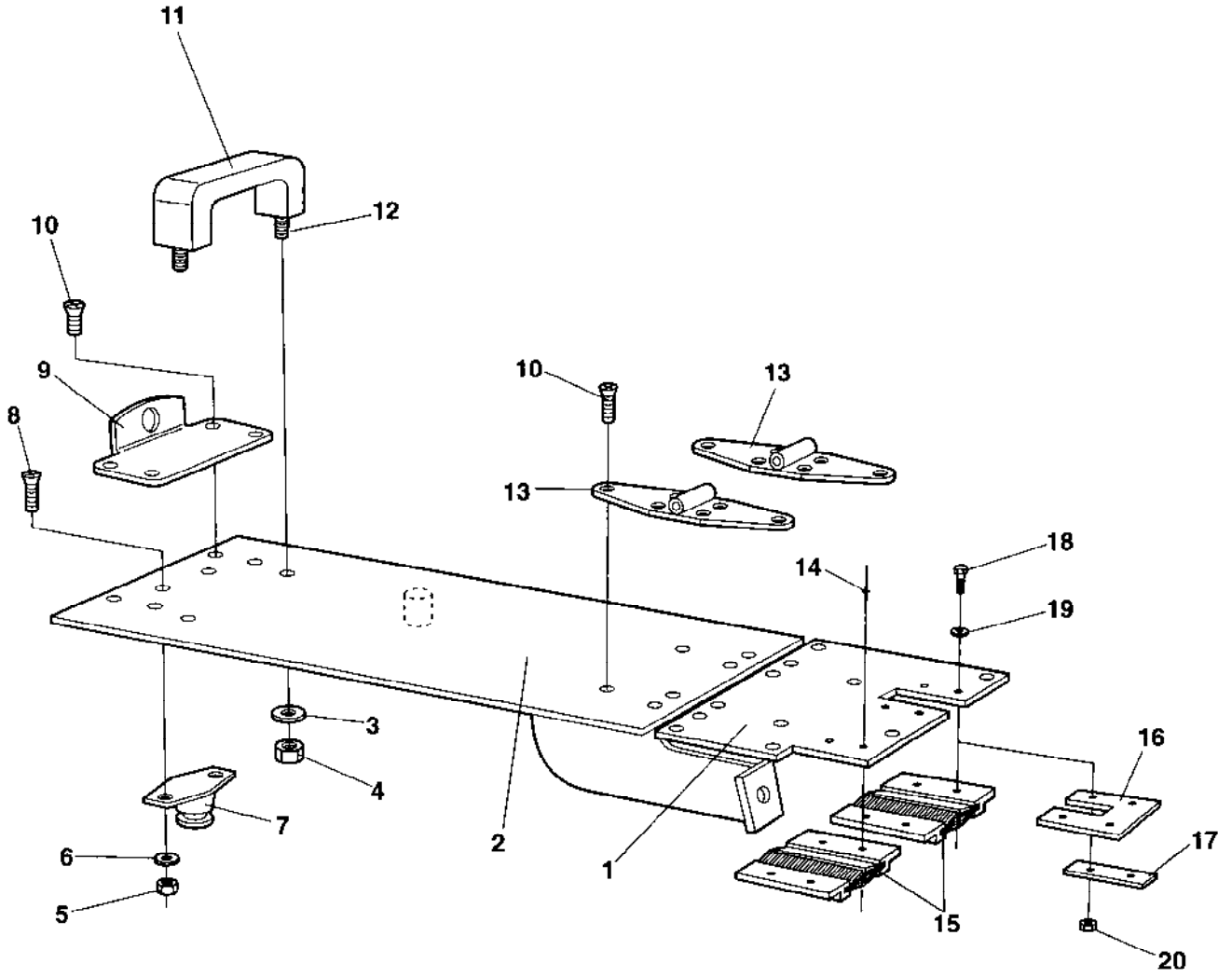
Ref. No.	Part No.	Rem.	Qty	Description	Code
			1	Engine hood, cpl	
1	286302-10		1	.Engine hood	
2	288461		1	.Screw	D
3	904232		1	.Washer 17x30x3	
4	286316	C	1	.Washer	
5	160080	C	1	.O-ring	
6	513017		2	.Screw	
7	570005		4	.Nut M8	
8	904229		4	.Washer 8,4x16x1,5	
9	282284		2	.Grab handle	
10	508048		4	.Screw	
11	288450	B	1	.Edge trim	
12	513008		9	.Screw	
13	286993		1	.Retainer	
14	904228		2	.Washer 6,4x12x1,5	
15	586002		2	.Lock nut M6	
16	286409		1	.Wire	
17	286410		2	.Washer	
18	286332		2	.Holder	
19	500031		1	Screw M10-1,5x40 8,8	
20	288110		1	.Blower housing	
21	570004		7	.Nut M6	
22	904639		7	.Washer 6,7x14x1,5	
23	513003		4	.Screw	
24	288409		2	.Spacer	
25	500029		12	.Screw M10-1,5x30 8,8	
26	900993		12	.Lock washer	
27	286310		2	.Hinge	
28	288259		6	.Rubber sealing	
29	381946	D	1	.Flange nut	
30	288356		1	.Edge trim	
31	500048		2	Screw M10-1,5x20 8,8	
32	904230		2	Washer 10,5x22x2	

B) L=0,625m

C) Old design

D) New design

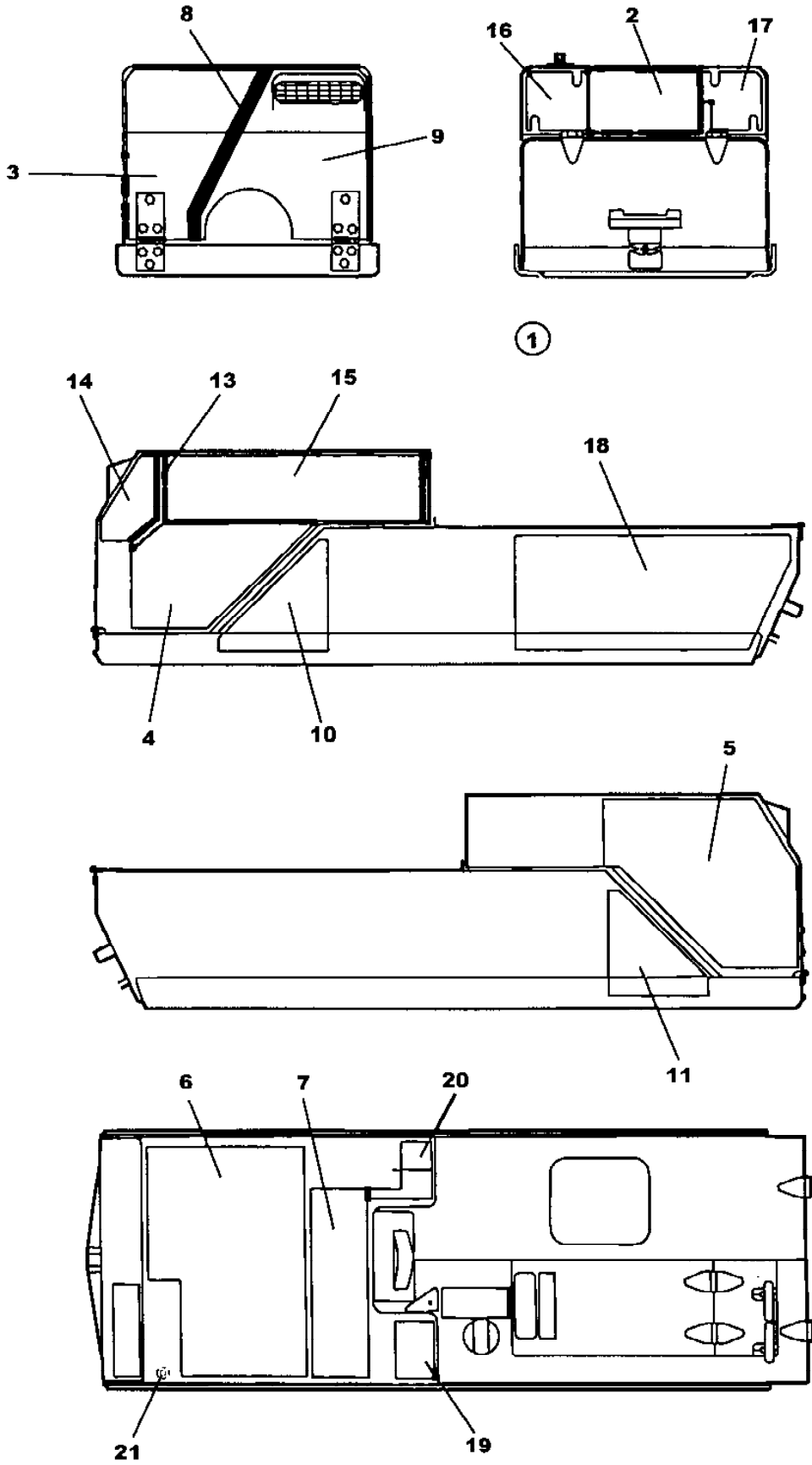
**TREMIX®**  
Service cover, cpl  
16549-1



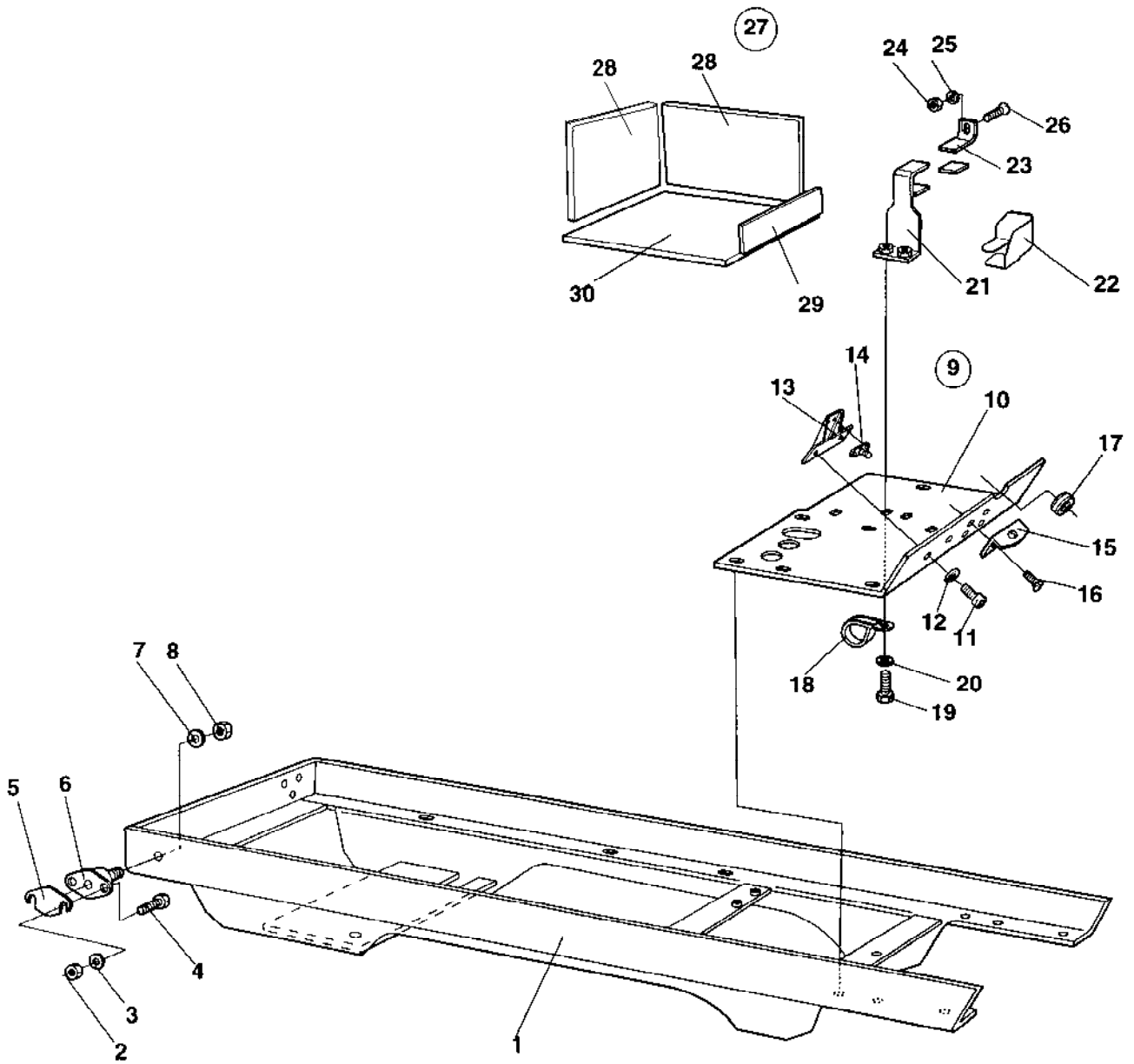
Ref. No.	Part No.	Rem.	Qty	Description	Code
1	286346-10		1	Cover	
2	286478-10		1	Cover	
3	904734		2	Washer 8,4x26x4	
4	570005		2	Nut M8	
5	570003		2	Nut	
6	904281		2	Washer 5,3x10x1	
7	791168		1	Door bumper	
8	904504		2	Screw M5 x 18	
9	286983		1	Locking device	
10	925785		16	Screw	
11	282284		1	Grab handle	
12	508056		2	Screw M8x40	
13	928632		2	Hinge	
14	624016	B	8	Blind rivet	
15	286355	B	4	Brush profile	D
16	381681	A	2	Cover	
17	382120	A	4	Bracket	
18	500007	A	8	Screw	
19	904281	A	16	Washer 5,3x10x1	
20	586001	A	8	Lock nut M5	

A) Some machines have been delivered with these parts

B) Not used any more

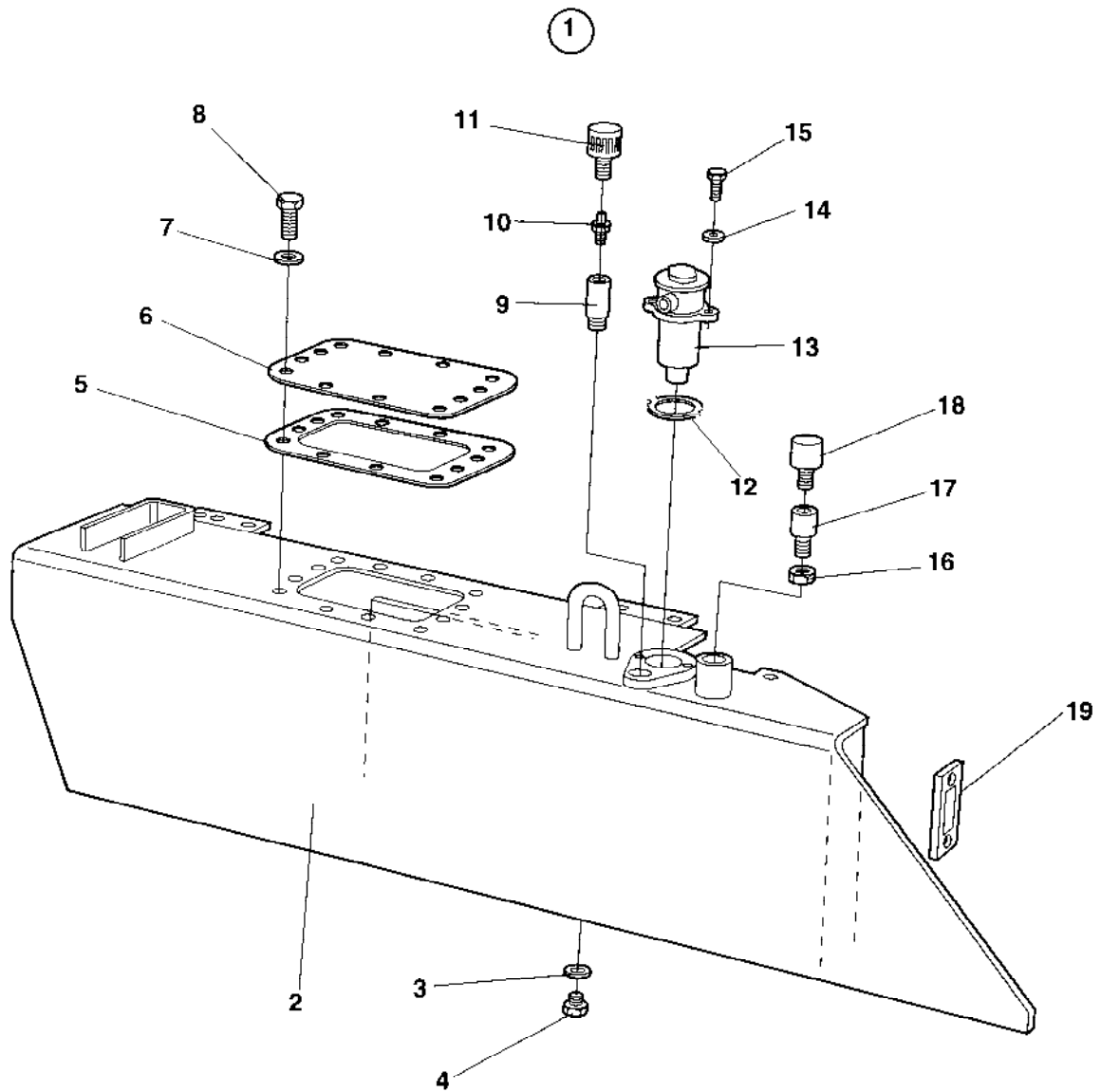


Ref. No.	Part No.	Rem.	Qty	Description	Code
1			1	Noise suppression, cpl	
2	288346		1	.Insulating plate	
3	288182		1	.Insulating plate	
4	288380		1	.Insulating plate	
5	288184		1	.Insulating plate	
6	288185		1	.Insulating plate	
7	288343		1	.Insulating plate	
8	288187		1	.Insulating plate	
9	288188		1	.Insulating plate	
10	288190		1	.Insulating plate	
11	288191		1	.Insulating plate	
13	288194		1	.Insulating plate	
14	288204		1	.Insulating plate	
15	288217		1	.Insulating plate	
16	288344		1	.Insulating plate	
17	288345		1	.Insulating plate	
18	288351		1	.Insulating plate	
19	286282		1	.Insulating plate	
20	286283		1	.Insulating plate	
21	373476		14	.Washer	

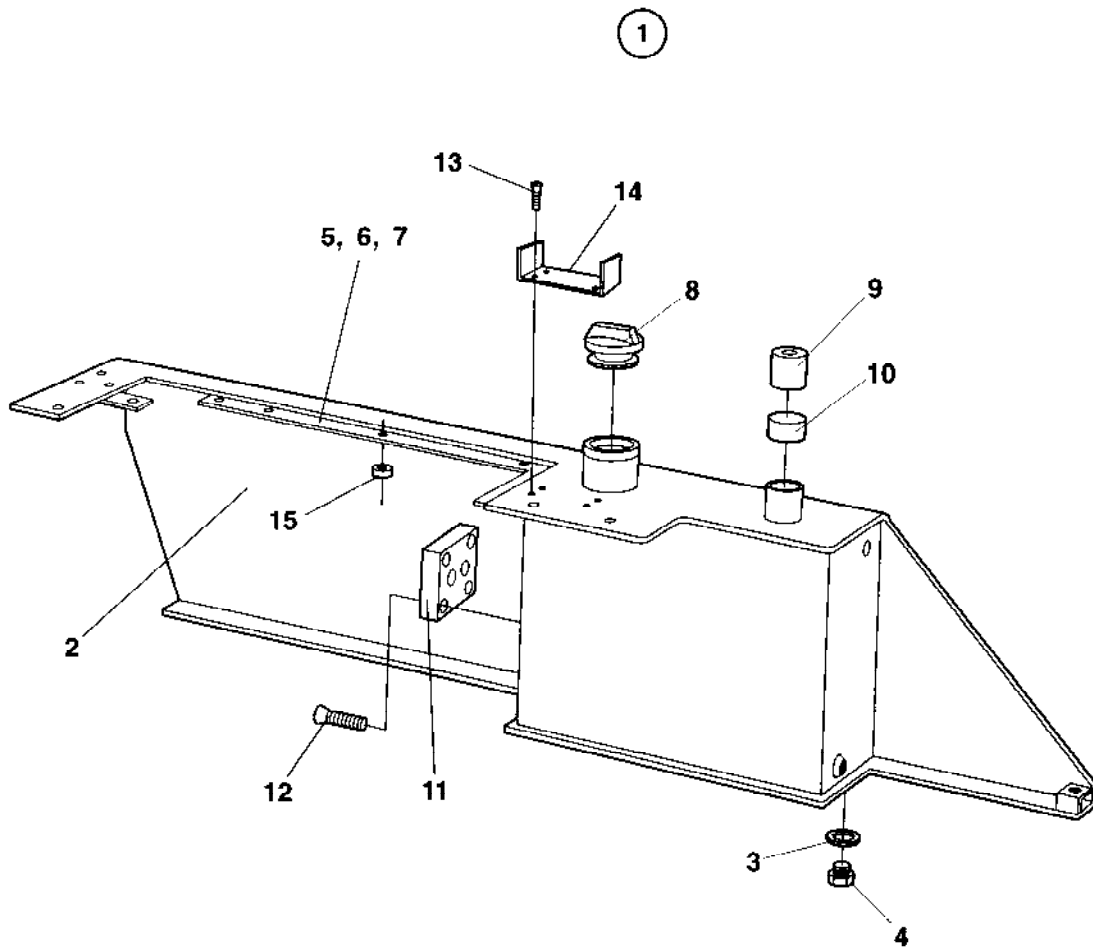


Ref. No.	Part No.	Rem.	Qty	Description	Code
1	286313-70		1	Frame	
2	586018		8	Lock nut M10	
3	904230		8	Washer 10,5x22x2	
4	500030		8	Screw M10-1,5x35H 8,8	
5	288401		4	Shims	
6	288063		4	Shock absorber	B
7	904231		4	Washer 13x24x2	
8	586019		4	Lock nut M12	
9	286424		1	Component plate, cpl	
10	286480-70	A	1	.Plate	
11	500022		2	.Screw M8-1,25x30 8,8	
12	904229		2	.Washer 8,4x16x1,5	
13	286435		1	.Plate	
14	450067		1	.Door bumper	D
15	286981	A	1	.Bracket	
16	929164		4	.Screw Model Old version	
	925785		4	.Screw Model New version	
17	903192		1	Grommet	
18	902558		2	Clamp	
19	500028		1	Screw M10-1,5x25 8,8	
20	904230		3	Washer 10,5x22x2	
21	286382		1	Holder	
22	385041		1	Protector	
23	286383		1	Holder	
24	586003		1	Lock nut M8	
25	904229		1	Washer 8,4x16x1,5	
26	902520		1	Screw	
27	163945		1	Insulator kit	
28	286488		1	.Insulator	
29	286489		1	.Insulator	
30	286487		1	.Insulator	

A) Interchangeable together with 286981.



Ref. No.	Part No.	Rem.	Qty	Description	Code
1			1	Hydraulic tank, cpl	
2	286416-10		1	.Hydraulic oil tank	
3	162011		1	.Washer, sealing	D
4	232143		1	.Plug	
5	288024		1	.Sealing	
6	288023		1	.Cover	
7	162009		12	.Seal ring	D
8	500053		12	.Screw M8-1,25x20 8,8	
9	286308		1	.Spacer	
10	288478		1	.Air breather	D
11	239629		1	.Air breather	D
12	904375		1	.O-ring	
13	288469		1	.Hydraulic filter, cpl.	
	935377		1	..Filter element	A
14	162010		2	.Seal ring	D
15	500028		2	.Screw M10-1,5x25 8,8	
16	570008		1	.Nut	
17	288459		1	.Stud	
18	288460		1	.Shock absorber	
19	904817		1	.Level gauge	



**Fuel tank**

<b>Ref. No.</b>	<b>Part No.</b>	<b>Rem.</b>	<b>Qty</b>	<b>Description</b>	<b>Code</b>
1			1	Fuel tank, cpl	
2	286421-10		1	.Fuel tank	
3	162011		1	.Washer, sealing	D
4	232143		1	.Plug	
5	286434	A	1	.Holder	
6	500028	A	2	.Screw M10-1,5x25 8,8	
7	904230	A	2	.Washer 10,5x22x2	
8	373304		1	.Cap	D
	902866		1	..Key Marked "455"	D
9	288475		1	.Stud	
10	288474		1	.Shock absorber	D
11				Not used on this model	D
12				Not used on this model	D
13	925785		4	.Screw	
14	286980		1	.Retainer	
15	286982	A	1	.Spacer	

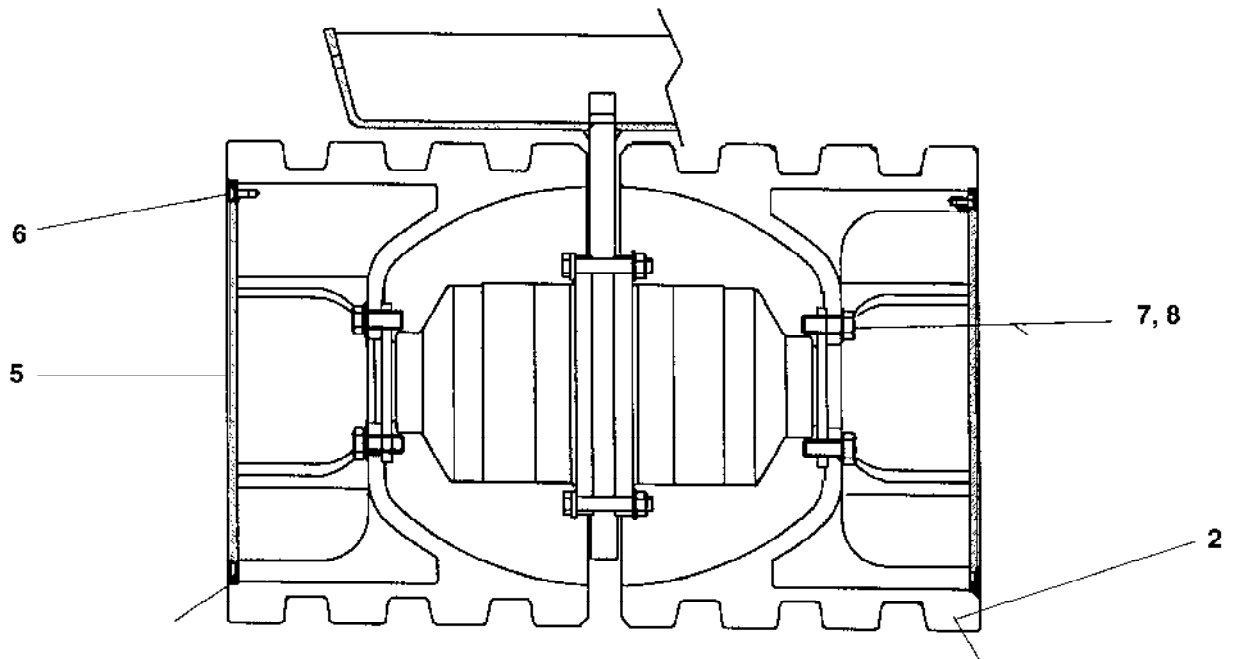
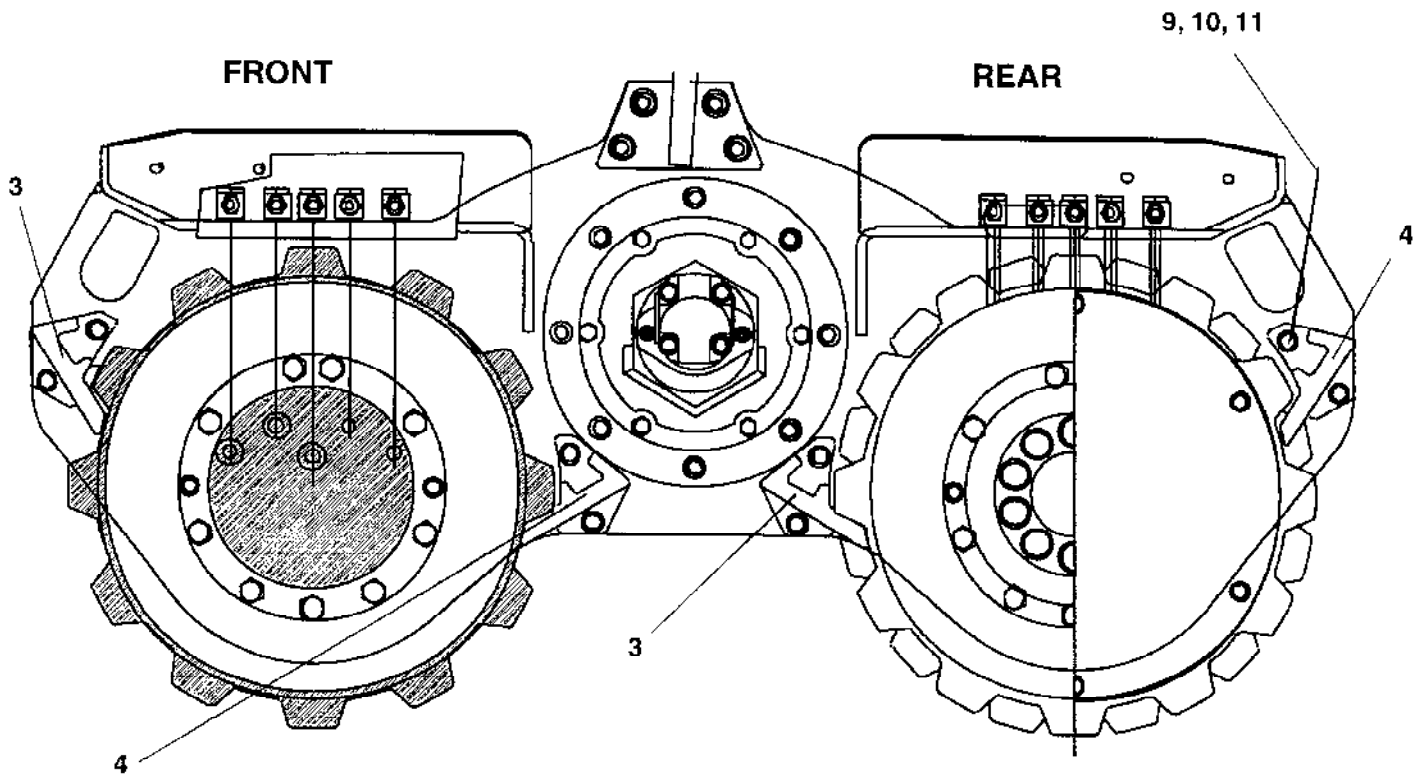
A) Old version



**Drums and eccentric element**

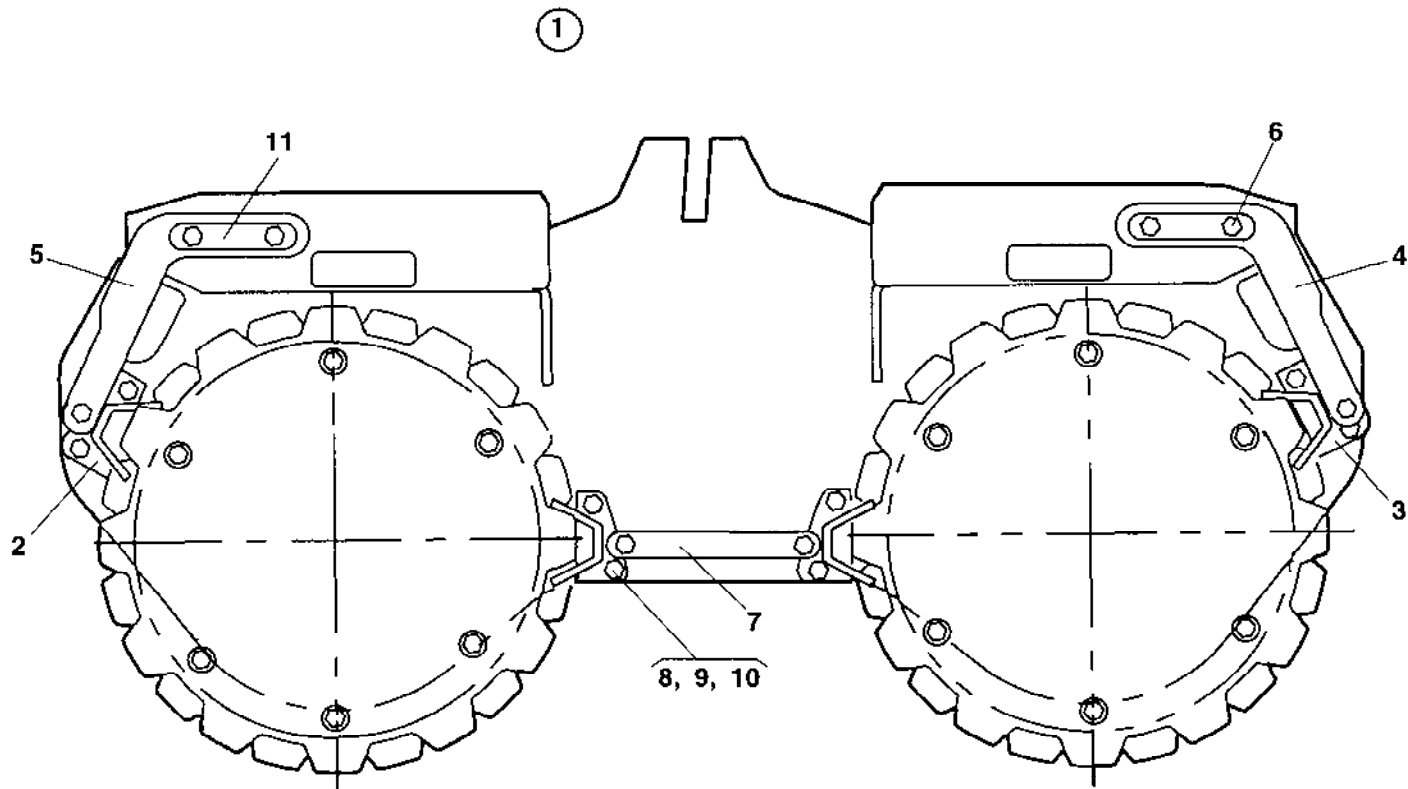
<b>Ref. No.</b>	<b>Part No.</b>	<b>Rem. Qty</b>	<b>Description</b>	<b>Code</b>
10			Drum, cpl ( Page 22 )	
20			Welded scrapers ( Page 24 )	
30			Eccentric element ( Page 26 )	

1



Ref. No.	Part No.	Rem.	Qty	Description	Code
1			1	Drum, cpl	
2	288352	A	4	.Drum	
	288359	B	4	.Drum	
	286286	C	4	.Drum	
	286287	D	4	.Drum	
3	288055	A	4	.Scraper	
	288299	B	4	Scraper	
	286289	C	4	Scraper	
	286291	D	4	.Scraper	
4	288054	A	4	.Scraper	
	288298	B	4	Scraper	
	286288	C	4	Scraper	
	286290	D	4	Scraper	
5	286387		4	.Cover	
6	500047		24	.Screw M8-1,25x35 8,8	
7	500205		40	.Screw	
8	904233		40	.Washer 21x36x3	
9	903735		8	.Screw M12x70 10,9	
10	904231		16	.Washer 13x24x2	
11	928849		8	.Nut	

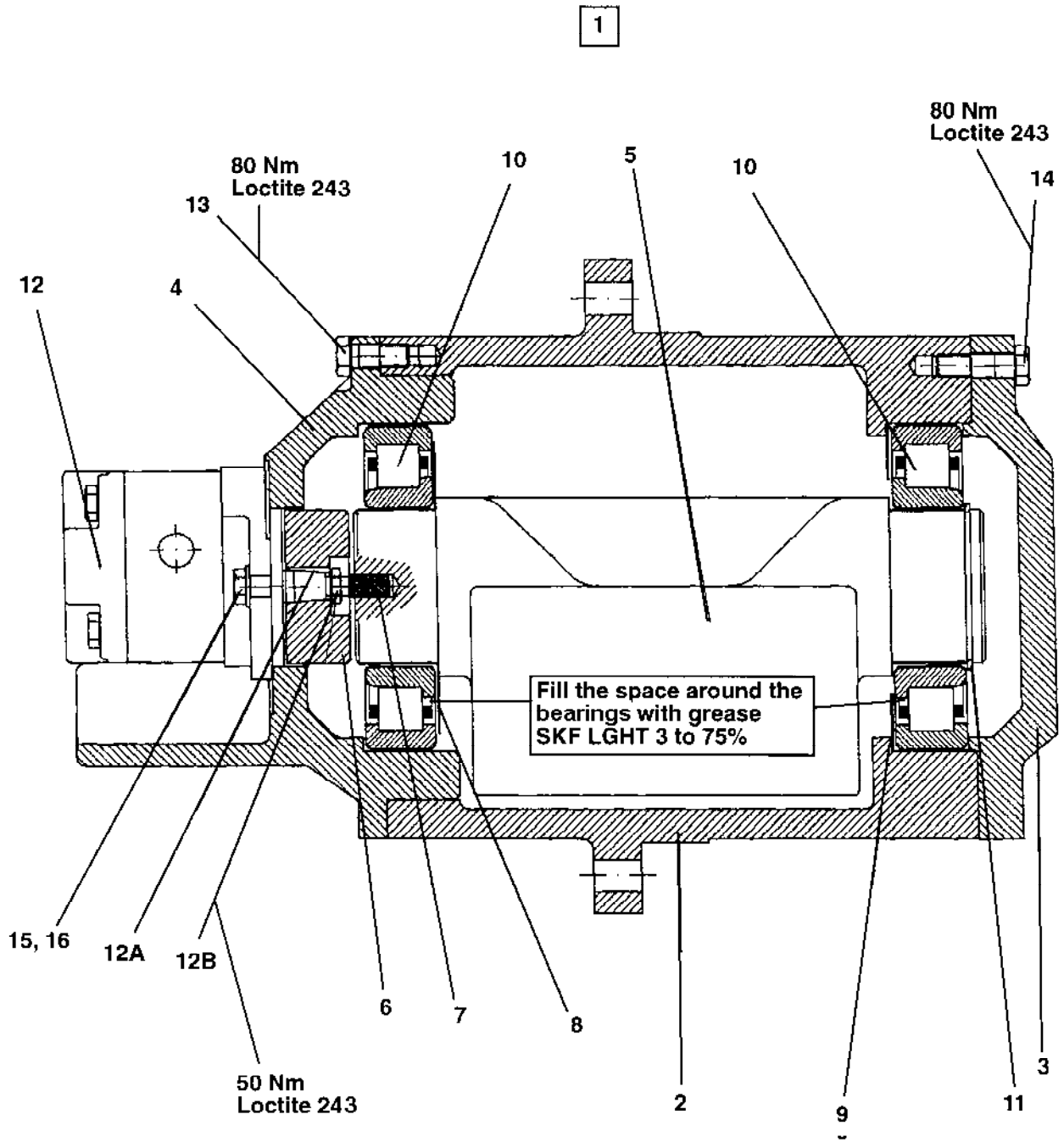
- A) Drum 850 mm, high profile 25 mm  
B) Drum 630 mm, high profile 25 mm  
C) Drum 850 mm, low profile 12,5 mm  
D) Drum 630 mm, low profile 12,5 mm



<b>Ref. No.</b>	<b>Part No.</b>	<b>Rem.</b>	<b>Qty</b>	<b>Description</b>	<b>Code</b>
1			1	Welded scrapers, cpl	
2	381721	A	4	.Scraper	
	380557	B	4	.Scraper	
3	381722	A	4	.Scraper	
	380558	B	4	.Scraper	
4	381587		2	.Bracket	
5	381588		2	.Bracket	
6	500161		8	.Screw M10-1,5x45 8,8	
7	381589		2	.Bracket	
8	500030		8	.Screw M10-1,5x35H 8,8	
9	586018		8	.Lock nut M10	
10	904230		16	.Washer 10,5x22x2	
11	381737		4	.Washer	

A) For 630 mm, high profile

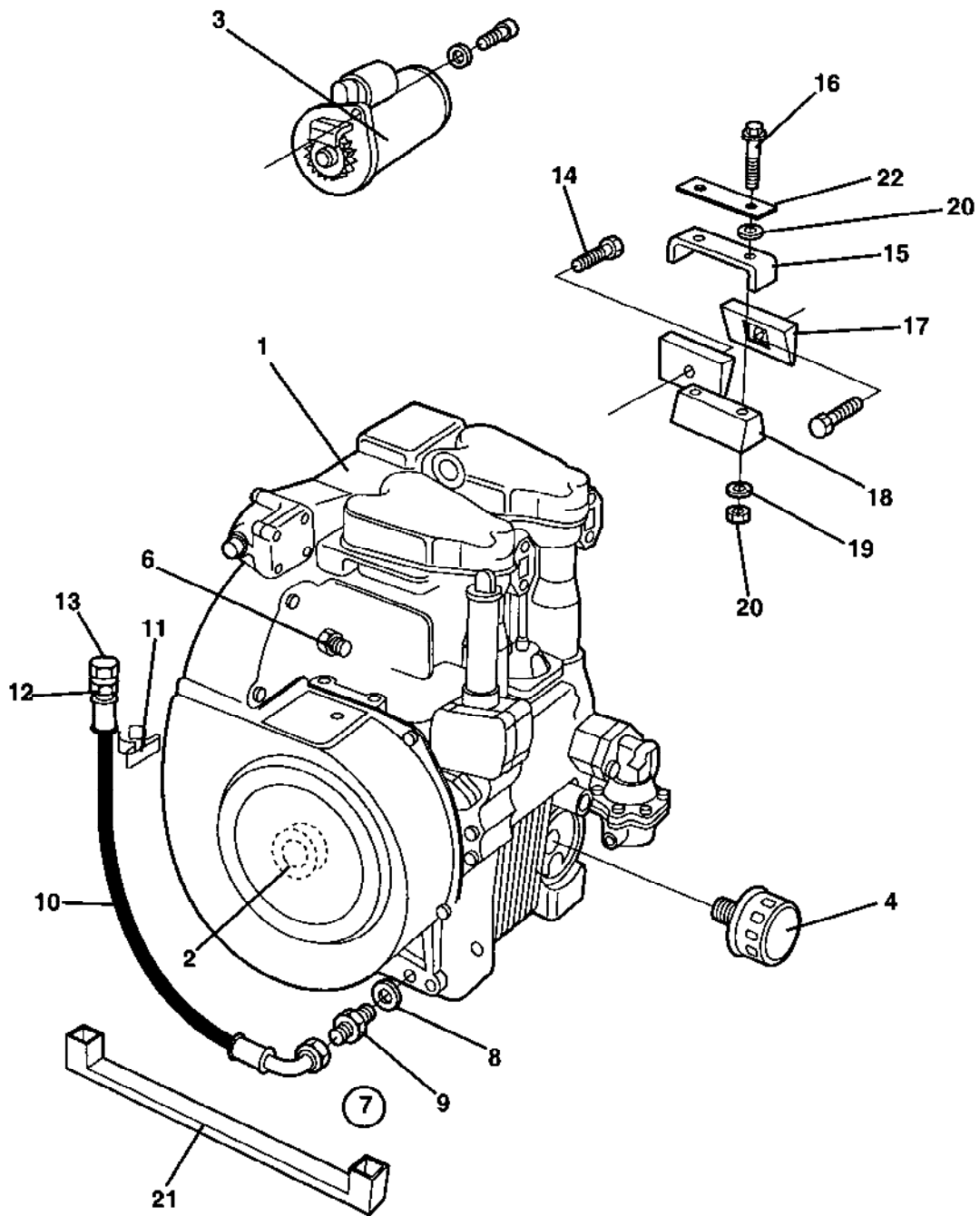
B) For 850, high profile



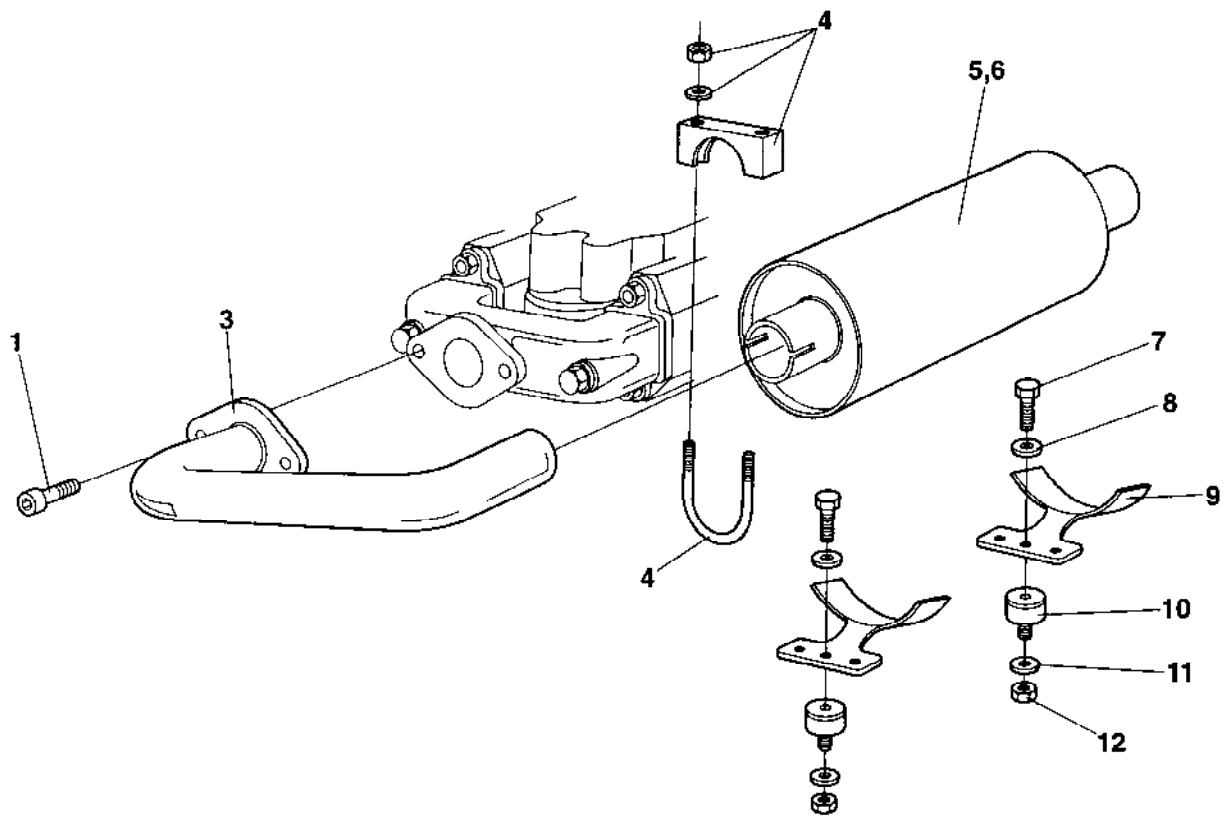
Ref. No.	Part No.	Rem.	Qty	Description	Code
1		1	1	Eccentric element, cpl	
2	288065	1	1	.Eccentric housing	
3	288067	1	1	.Cover	
4	288066	1	1	.Bearing housing	
5	288068	1	1	.Eccentric weight	
6	288069	1	1	.Clutch	
7	628025	2	2	.Cylindric pin	
8	288232	1	1	.Plate	
9	288241	1	1	.Plate	
10	903233	2	2	.Bearing	
11	150028	1	1	.Snap ring	
12	288049	1	1	.Hydraulic motor	C
	239676	1	1	..Gasket kit	
	239677	1	1	..Sleeve bearing	
12-A	239566	1	1	..Key	
12-B	239567	1	1	..Nut	
13	500046	6	6	.Screw M12x30H 8,8 FZB	
14	500194	6	6	.Screw M12x40	
15	508029	2	2	.Screw M10-1,5x30H 8,8	
16	904557	2	2	.Washer 10,5x22x4	



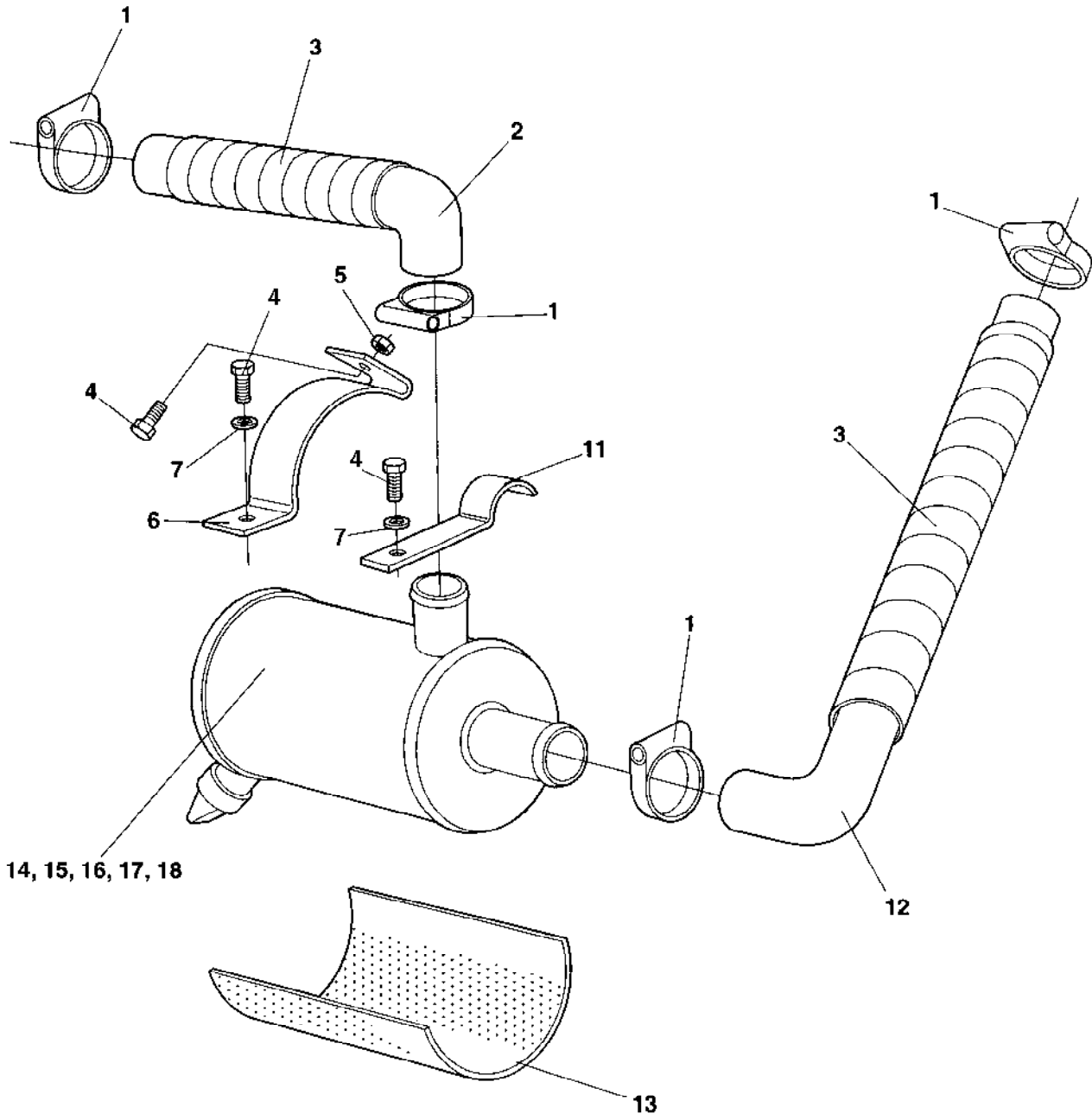
<b>Ref. No.</b>	<b>Part No.</b>	<b>Rem. Qty</b>	<b>Description</b>	<b>Code</b>
10			Engine ( Page 30 )	
20			Exhaust system ( Page 32 )	
30			Air inlet system ( Page 34 )	
40			Fuel system ( Page 36 )	
50			Plate air inlet ( Page 38 )	



<b>Ref. No.</b>	<b>Part No.</b>	<b>Rem. Qty</b>	<b>Description</b>	<b>Code</b>
1	288173	1	Diesel engine	
	385450	1	.Throttle arm From 48610418	
2	936012	1	.Alternator	C
3	909741	1	.Starter	C
4	238380	1	.Oil filter	A
5	902209	1	.Charge relay	
6	936013	1	.Oil pressure switch	
7	288235	1	Oil drain hose, cpl.	
8	747282	1	.Copper washer	
9	288236	1	.Adapter	
10	287336	1	.Hydraulic hose	
11	281118	1	.Ryw-clips	
12	230400	1	.Cap	D
13	903386	1	.Screw	
14	500188	4	Screw M8-1,25x14 8,8	
15	288418	1	Plate Up to 48610328	
	381803	1	Plate From 48610329	
16	500092	2	Screw Up to 48610328	
	500296	2	Screw From 48610329	
17	288416	2	Key	
18	288417	1	Key	
19	904230	5	Washer 10,5x22x2	
20	902287	2	Nut Up to 48610328	
21	288098	1	Air guide	
22	383839	1	Lock washer From 48610329	

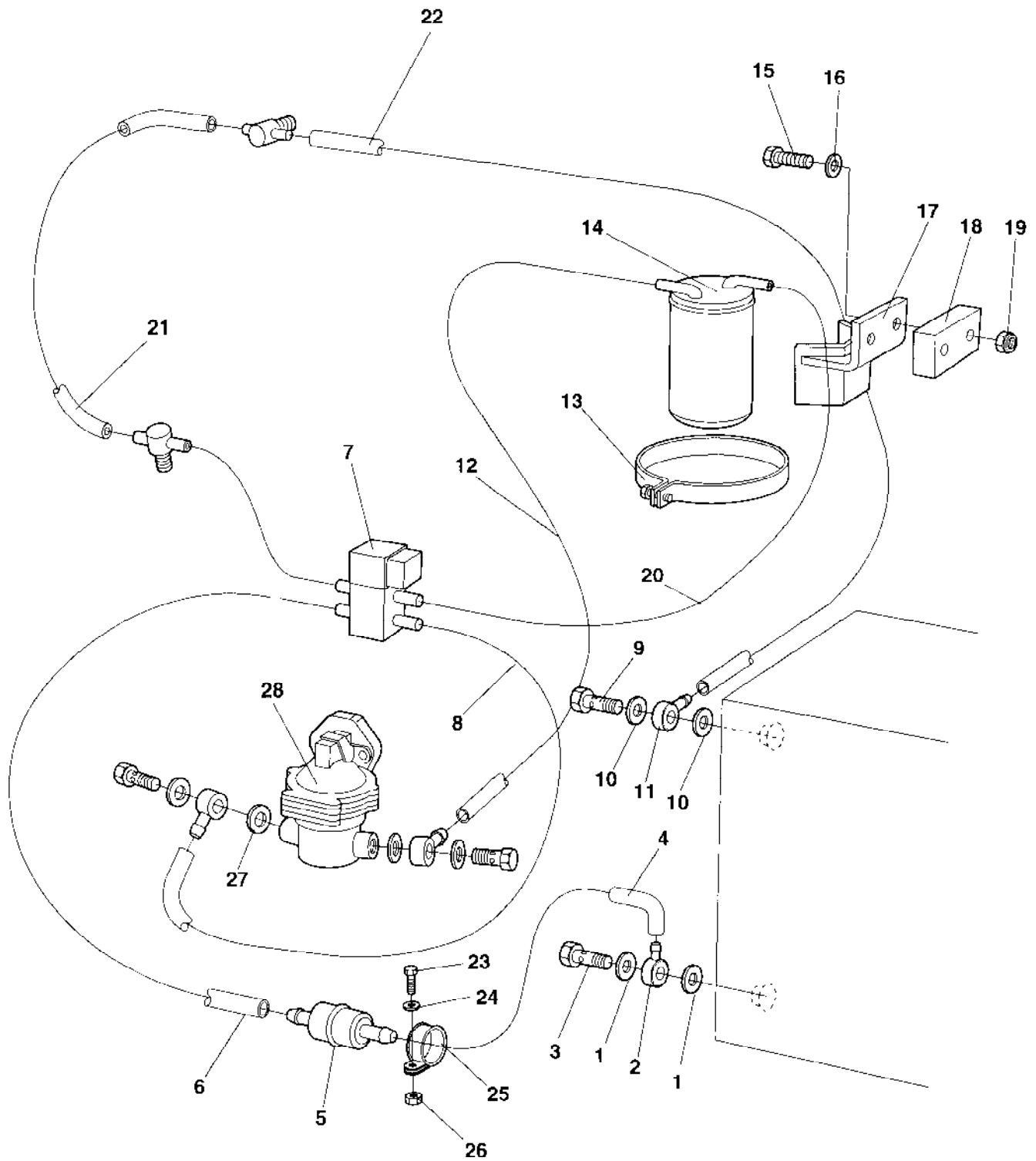


Ref. No.	Part No.	Rem.	Qty	Description	Code
1	508029		2	Screw M10-1,5x30H 8,8	
3	288115		1	Exhaust tube	
	239757		1	Gasket, muffler	
4	313121		1	Clamp	
5	239592		1	Muffler	D
6	239593		2	Clamp	
7	500042		2	Screw	
8	600006		4	Washer	
9	239594		2	Bracket	
10	288329		2	Shock absorber	B
11	600006		2	Washer	
12	791182		2	Nut	



Ref. No.	Part No.	Rem.	Qty	Description	Code
1	313008		4	Hose clamp	D
2	286363		1	Hose	
3	288321		1	Hose protection	
4	500188		3	Screw M8-1,25x14 8,8	
5	570005		1	Nut M8	
6	286373		1	Bracket	
7	904229		3	Washer 8,4x16x1,5	
11	286354		1	Bracket	
12	288075		1	Hose	B
13	288420		1	Absorbent	
14	239595	A	1	Air filter, cpl	
15	239596		1	.Filter element	A
16	239597		1	.Nut	
17	239598		1	.Cover	
18	239599		1	.Evacuator valve	

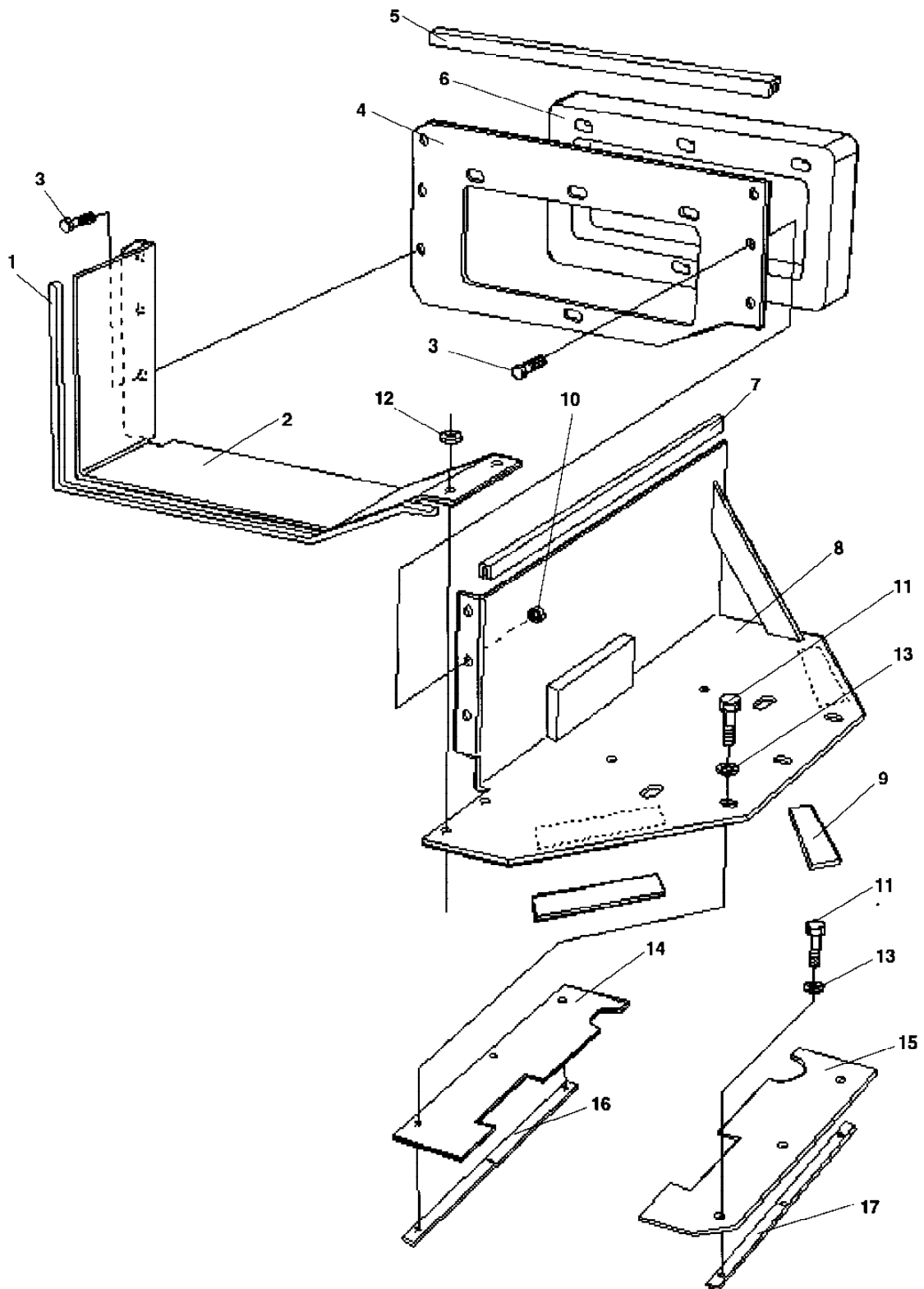
A) Supplied with engine



**Fuel system**

Ref. No.	Part No.	Rem.	Qty	Description	Code
1	747282		2	Copper washer	
2	901121		1	Banjo fitting	
3	330171		1	Hollow screw	
4	239673	A	1	Hose	
5	238360		1	Fuel filter	A
6	239673	B	1	Hose	
7	239606		1	Fuel shut off	
8	239673	A	1	Hose	
9	230195		1	Hollow screw	
10	748115		2	Copper washer	D
11	334041		1	Banjo nipple	
12	239673	C	1	Hose	
13	239604		1	Clamp	
14	239602		1	Fuel filter with separator	A
15	500024		2	Screw	
16	904229		2	Washer 8,4x16x1,5	
17	288447		1	Bracket	
18	288301		1	Spacer	
19	586003		2	Lock nut M8	
20	239673	D	1	Hose	
21	239673	E	1	Hose	
22	239674	D	1	Hose	
23	902520		1	Screw	
24	904229		1	Washer 8,4x16x1,5	
25	283711		1	Hose clamp	
26	586003		1	Lock nut M8	
27	912453		4	Washer	
28	238378		1	Injection pump	
	938313	F		Shim	
	938314	G		Shim	

- A) L=0,28m
- B) L=0,18m
- C) L=0,6m
- D) L=0,5m
- E) L=0,08m
- F) 1.0 mm
- G) 1.4 mm



Ref. No.	Part No.	Rem.	Qty	Description	Code
1	287724	A	1	Edge trim	
2	288117		1	Plate	
3	508002		8	Screw	
4	288116		1	Plate	
5	287724	B	1	Edge trim	
6	288332		1	Gasket	
7	288450	C	1	Edge trim	
8	288118		1	Plate	
9	297018	D	1	Rubber strip	
10	570004		8	Nut M6	
11	500015		6	Screw M6-1x30 8,8	
12	928381		2	Washer 6,4x18x1,6	
13	928381		6	Washer 6,4x18x1,6	
14	288341		1	Gasket	
15	288342		1	Gasket	
16	288354		1	Plate	
17	288353		1	Plate	

A) L=0,4m

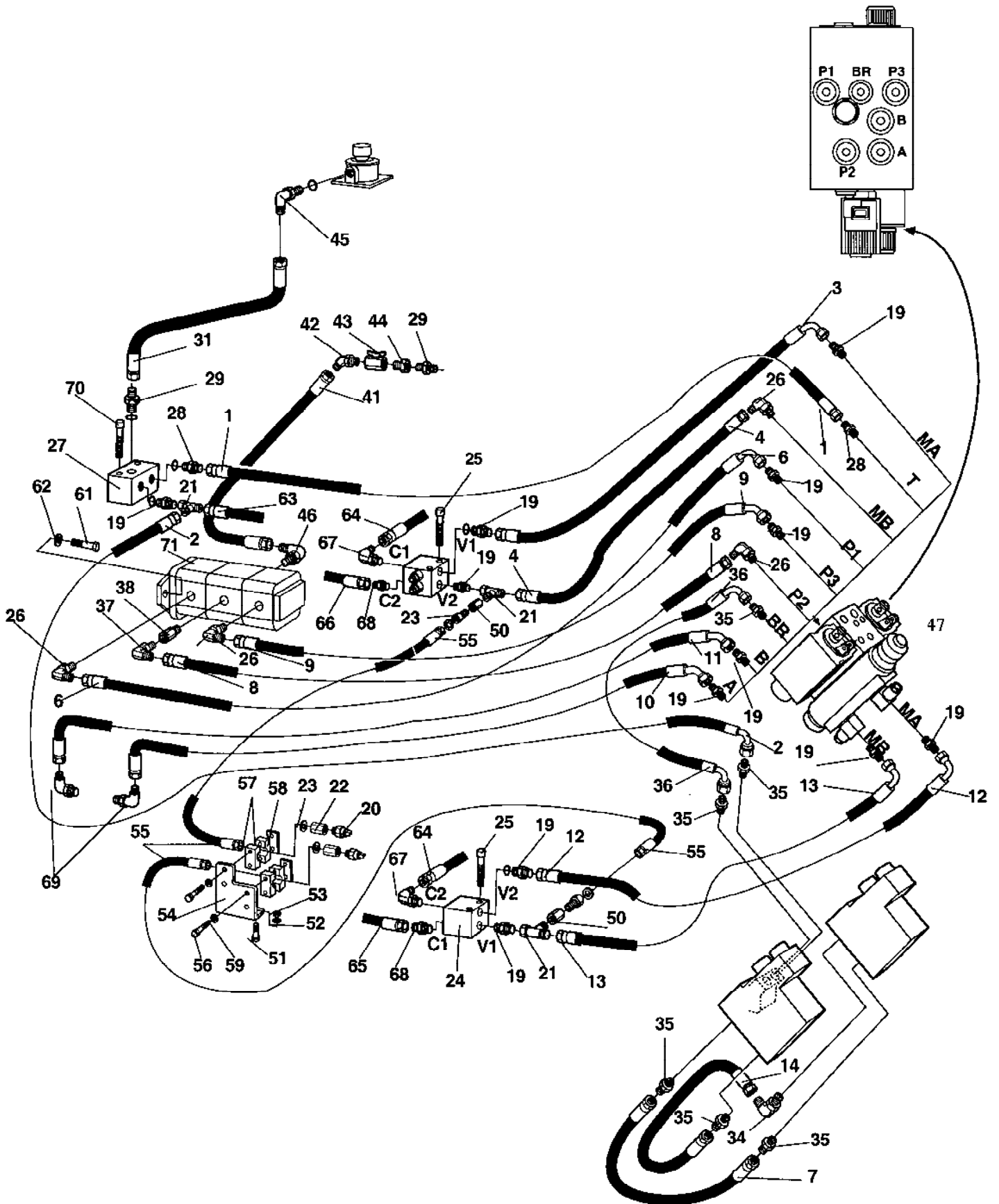
B) L=0,265m

C) L=0,465 m

D) L=2 x 0,2 m



Ref. No.	Part No.	Rem. Qty	Description	Code
10			Hydraulic system, upper part ( Page 42 )	
20			Hydraulic system, lower part ( Page 46 )	
30	288348		Wheel motor ( Page 48 )	C
40			Hydraulic pump installation ( Page 50 )	
50			Hydraulic valve ( Page 52 )	



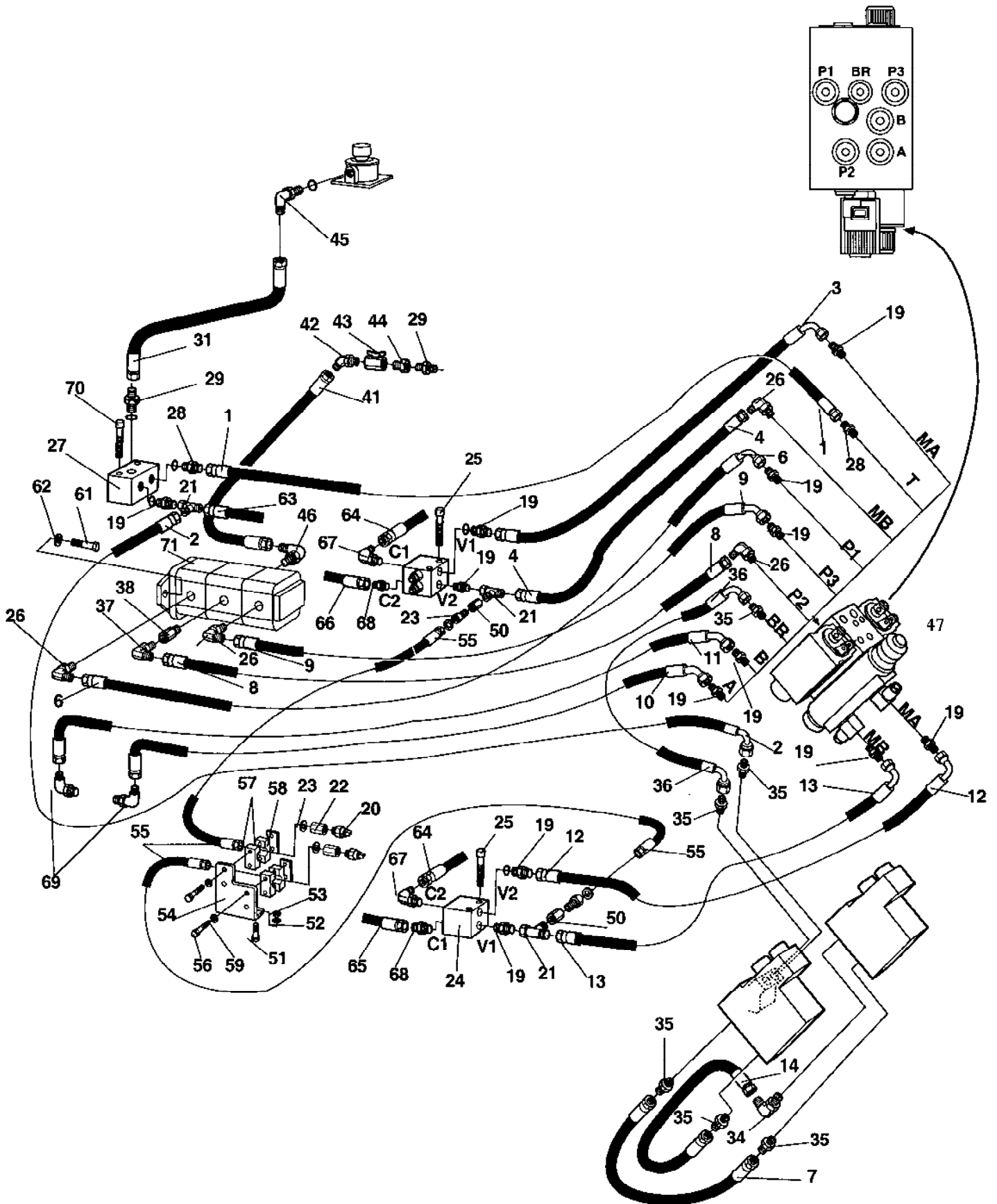
Ref. No.	Part No.	Rem.	Qty	Description	Code
1	483253		1	Hydraulic hose	
2	483362		1	Hydraulic hose	
3	482944		1	Hydraulic hose	
4	483436		1	Hydraulic hose	
6	483437		1	Hydraulic hose	
7	483363		1	Hydraulic hose	
8	483159		1	Hydraulic hose	D
9	483256		1	Hydraulic hose	
10	483257		1	Hydraulic hose	
11	483258		1	Hydraulic hose	
12	483319		1	Hydraulic hose	
13	483320		1	Hydraulic hose	
14	483364		1	Hydraulic hose	
19	334236		12	Adapter	
20	288384		2	Pressure sender	
21	334234		3	Tee-connector	
22	288385		6	Adapter	
23	162024		4	Washer, sealing	
24	288105		2	Flow divider	
	935858		2	Seal kit	
25	513013		4	Screw	
26	334235		4	Adapter	
27	286989		1	Valve block	
28	334116		2	Straight o-ring connector	
29	334156		2	Adapter	
31	483233		1	Hydraulic hose	
34	334563		1	Adapter	
35	334520		6	Adapter	
36	483368		1	Hydraulic hose	
37	288234		1	Angle adapter	
38	288378		1	Adapter	
41	483443		1	Hydraulic hose	
42	234991		1	Adapter	
43	233304		1	Ball valve	
44	330438		1	Straight connector	
45	234990		1	Elbow 90	
46	334237		1	Adapter	
47			1	Hydraulic valve	
50	383563		2	Reduction From 48610381	
51	500029		2	Screw M10-1,5x30 8,8 From 48610338	
52	904230		2	Washer 10,5x22x2 From 48610338	
53	586018		2	Lock nut M10 From 48610338	
54	385227		1	Bracket From 48610338	
55	384952		2	Hydraulic hose From 48610381	
56	791147	S	2	Screw From 48610338	
	500186	T	4	Screw M6-1x45 8,8 From 48610338	
57	791146		2	Pipe clamp From 48610339	
58	288085		2	Weld plate From 48610338	
59	904228		4	Washer 6,4x12x1,5 From 48610338	
60	288053		1	Hydraulic pump	C
61		U	2	Screw	C
62		U	2		C
63		R	2	Hydraulic hose	C
64		R	1	Hydraulic hose	C
65		R	1	Hydraulic hose	C
66		R	2	Hydraulic hose	C
67	334235		2	Adapter	
68	334236		2	Adapter	
69		R	2	Adapter	
70			2	Screw	

R) See section hydraulic system lower part

S) L = 90mm

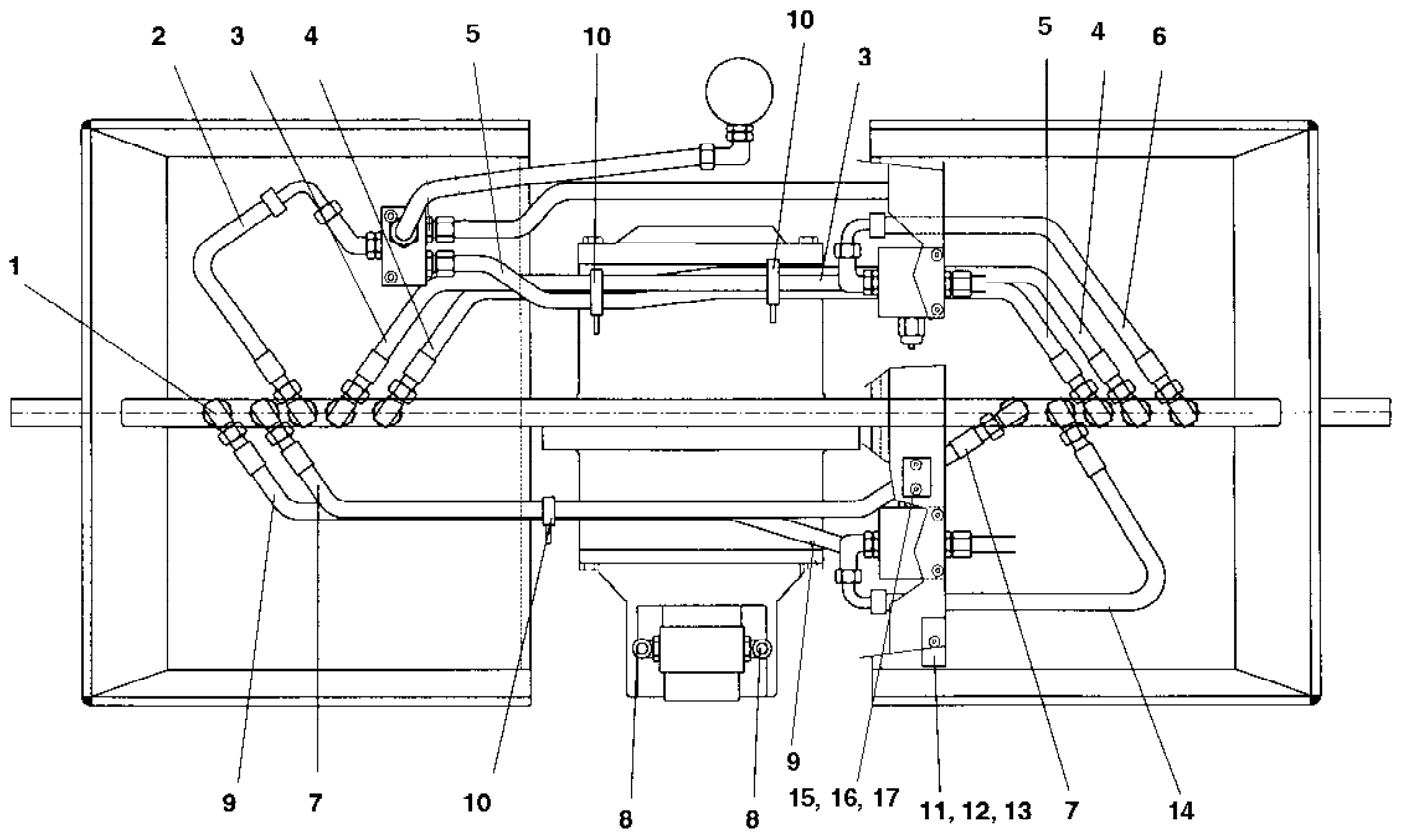
T) L = 45mm

U) See section hydraulic pump installation



**Hydraulic system, upper part**

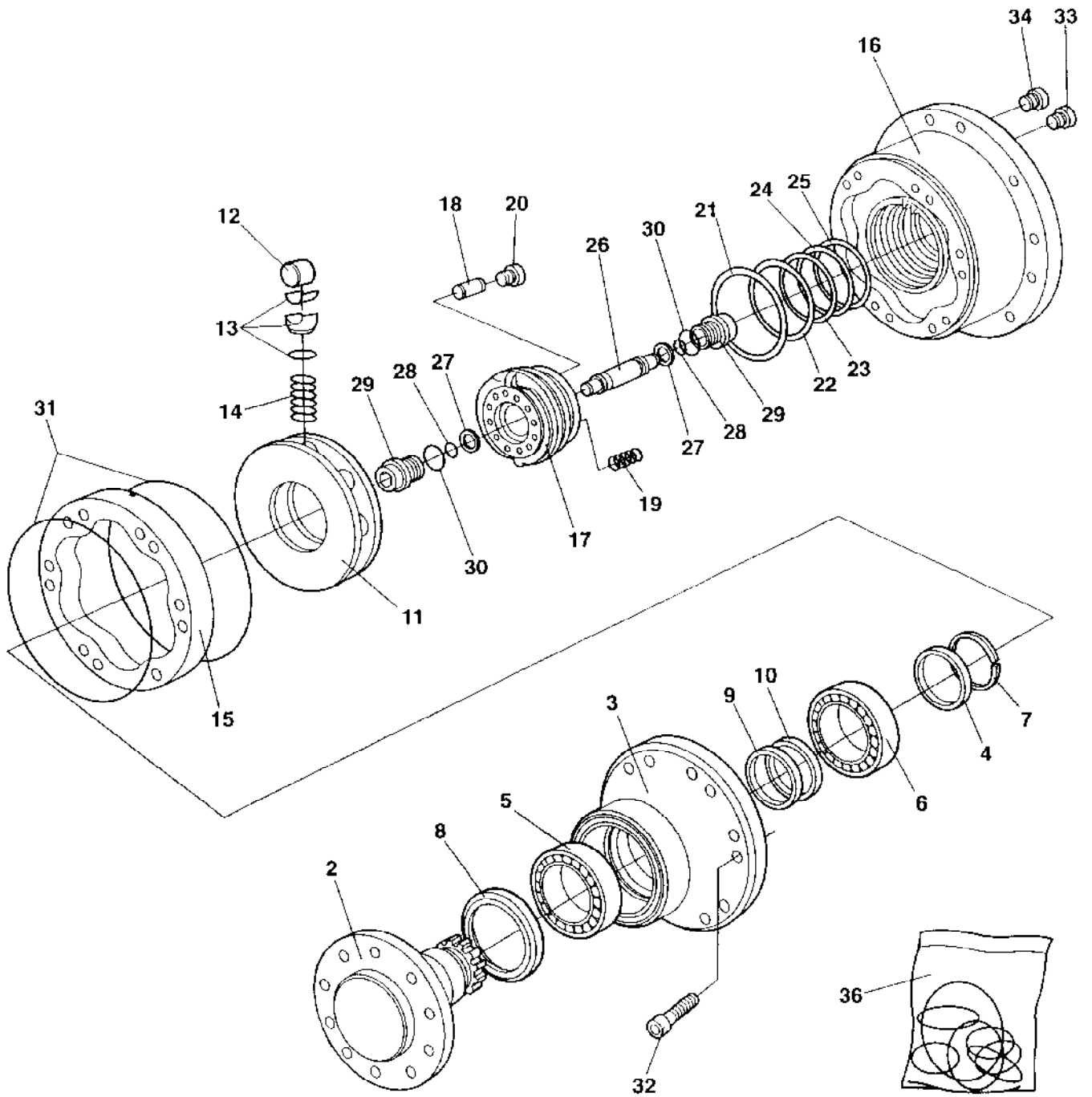
<b>Ref. No.</b>	<b>Part No.</b>	<b>Rem.</b>	<b>Qty</b>	<b>Description</b>	<b>Code</b>
71		U	1	Hydraulic pump	
U) See section hydraulic pump installation					



**Hydraulic system, lower part**

<b>Ref. No.</b>	<b>Part No.</b>	<b>Rem.</b>	<b>Qty</b>	<b>Description</b>	<b>Code</b>
1	334235		10	Adapter	
2	483259		1	Hydraulic hose	
3	483260		1	Hydraulic hose	
4	483261		1	Hydraulic hose	
5	483159		1	Hydraulic hose	D
6	483263		1	Hydraulic hose	
7	483264		1	Hydraulic hose	
8	334238		2	Adapter	
9	483318		1	Hydraulic hose	
10	313041			Cable ties L=186 mm	
11	288161		1	Clamp	
12	288162		1	Cover plate	
13	500023		1	Screw	
14	483263		1	Hydraulic hose	
15		A	1	Clamp	
16		A	1	Cover plate	
17		A	1	Screw	

A) Not used on this model

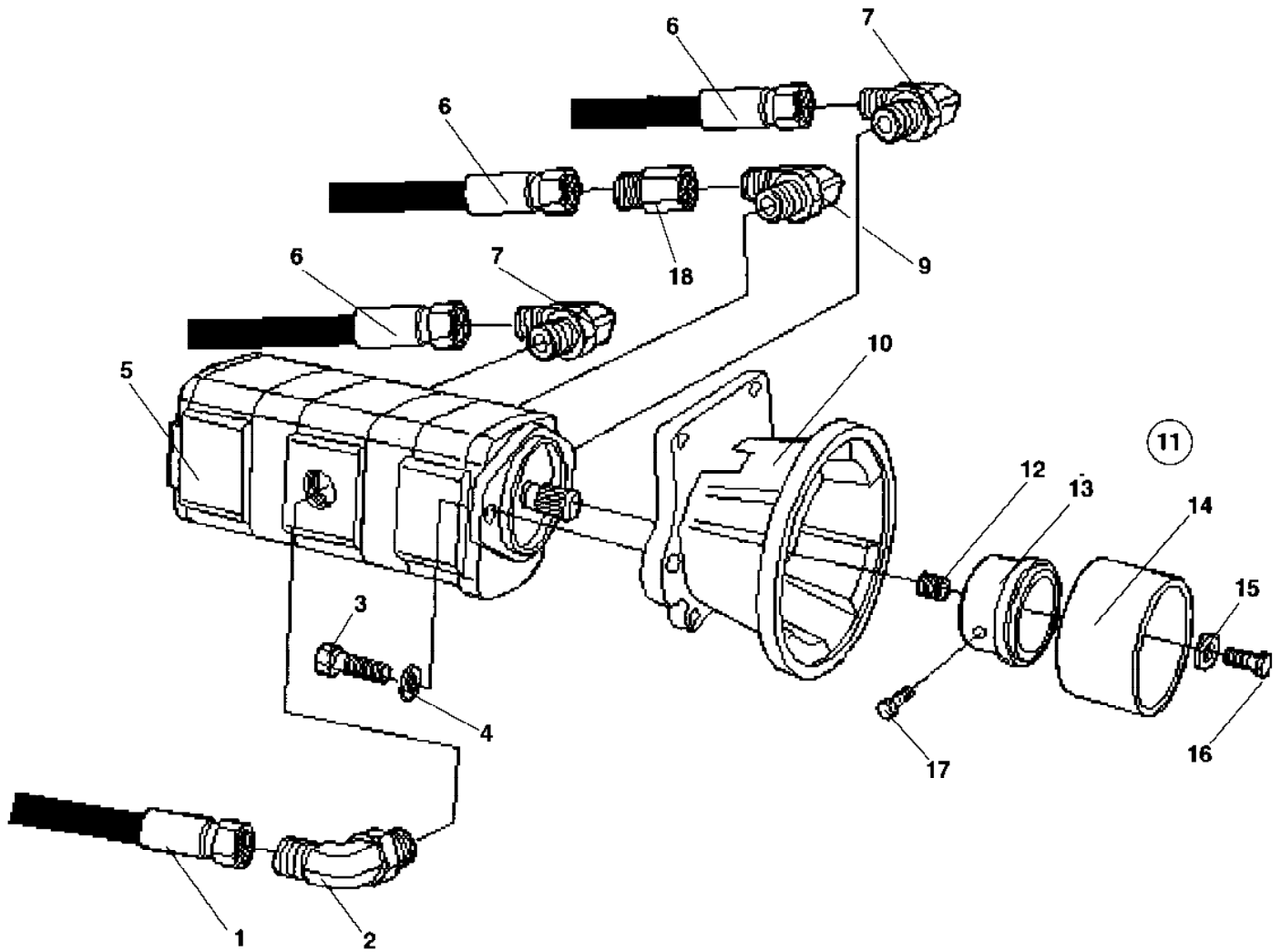


Ref. No.	Part No.	Rem.	Qty	Description	Code
2	935975		1	.Shaft	
3	935976		1	.Front housing	
4	909659		1	.Washer	
5	935977		1	.Bearing	
6	909661		1	.Bearing	
7	909662		1	.Split ring	
8	909663	A	1	.Seal	
9	935978	A	1	.Seal	
10	935979	A	1	.Seal	
11		C	1	.Cylinder block	
12		C	8	.Roller	
13		C	8	.Piston	
14		C	8	.Spring	
15		C	1	.Cam	
16	935986		1	.Rear housing	
17	935987		1	.Distributor ring	
18	935988		1	.Dowel	
19	902398		9	.Spring	
20	935989		1	.Plug	
21	935990	A	1	.Seal	
22	935991	A	1	.Seal	
23	935992	A	1	.Seal	
24	935993	A	1	.Seal	
25	935994	A	1	.Hydraulic system lower part	
26	935995		1	.Spool flushing	
27	935996		2	.Washer	
28	935997		2	.Spring	
29	935998		2	.Plug	
30	935999	A	2	.O-ring	
31	909681	A	2	.O-ring	
32	936001		12	.Screw	
33	936002	B	1	.Plug	
34	936003	B	2	.Plug	
36	935973		1	Seal kit	D

A) Included in kit item 36

B) Shipping

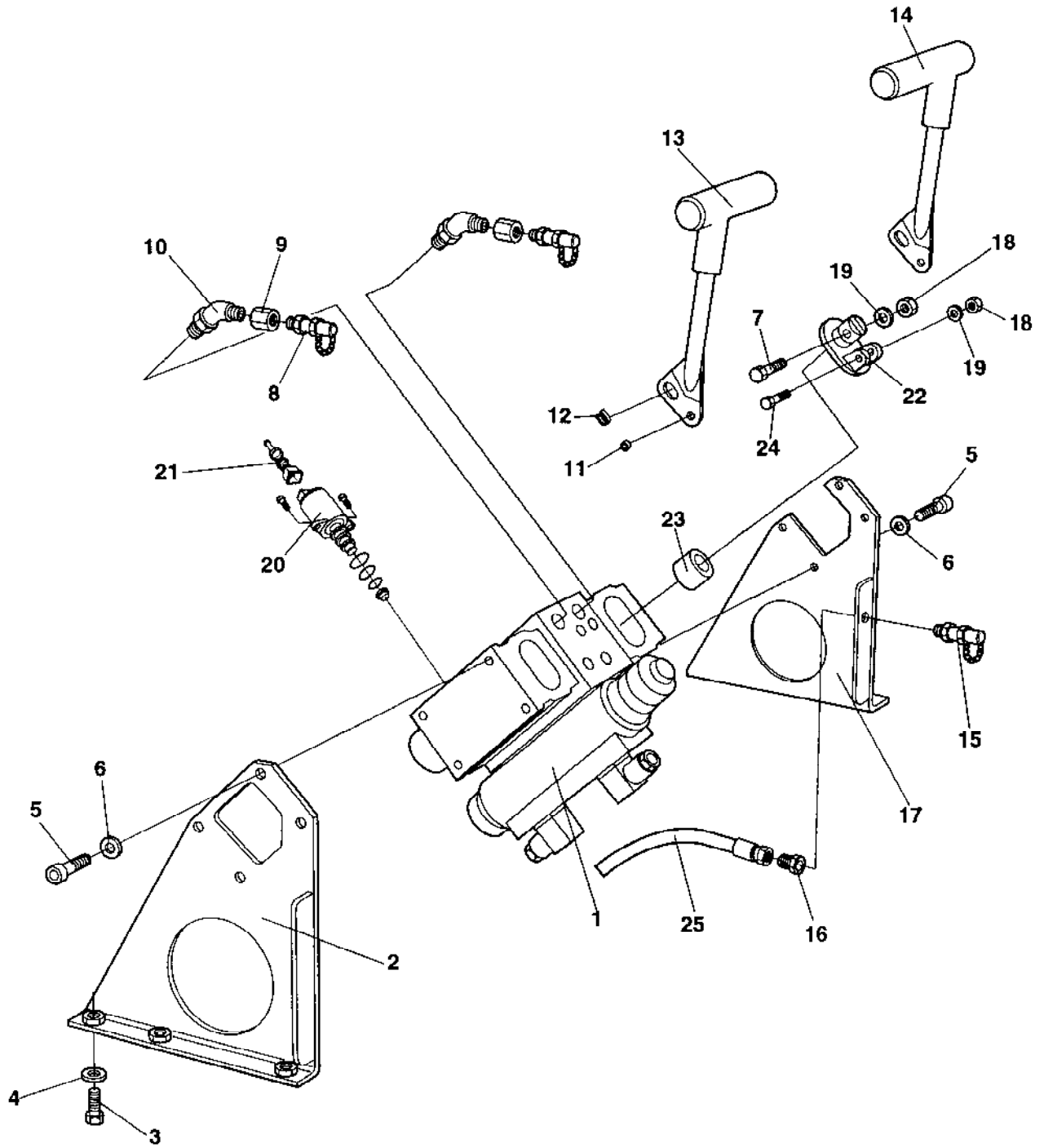
C) Not sold separately, is included in rotating group cpl P/N: 935980. Rotating group cpl. consist of item 11, 12, 13, 14 and 15.



**Hydraulic pump installation**

<b>Ref. No.</b>	<b>Part No.</b>	<b>Rem.</b>	<b>Qty</b>	<b>Description</b>	<b>Code</b>
1		A	1	Hydraulic hose	D
2		A	1	Adapter	D
3	508029		2	Screw M10-1,5x30H 8,8	
4	904230		2	Washer 10,5x22x2	
5	288053		1	Hydraulic pump	C
6		A	1	Hydraulic hose See page 34	C
7		A	2	Adapter	C
8		A	1	Adapter	C
9		A	1	Adapter	C
10	236905		1	Adapter	
11	939230		1	Clutch hub cpl.	
12	909528		1	.Threaded insert	
13	239601		1	.Coupling hub	
14	239600		1	Flexible coupling	
15			1	.Washer	
16			2	.Screw	
17	508029		1	Screw M10-1,5x30H 8,8	
18		A	1	Adapter	

A) See section hydraulic system, upper part



Ref. No.	Part No.	Rem.	Qty	Description	Code
1	288432		1	Valve block	
2	286484		1	Bracket	
3			1	M8	
4			1	M8	
5			8	Screw	
6			8	Washer	
7	288451		2	Screw	
8	923405		2	Measuring nipple	
9	288385		1	Adapter	
10	234992		2	Adapter	
11	901830		2	Sleeve bearing	
12	288408		2	Bushing	
13	286406		1	Lever, left	
14	286407		1	Lever, right	
15	356348		1	Measuring nipple	D
16		A	1	Adapter	D
17	286485		1	Bracket	
18	586001		4	Lock nut M5	
19	904281		8	Washer 5,3x10x1	
20	937668		4	Solenoid valve	D
21	937669		4	Connector, kit	D
22	938222	B	2	Lever holder	
	382610	C	2	Lever holder	
23	904937	C	2	Shear wiper	
24	500080		2	Screw	
25	483369		1	Hydraulic hose	

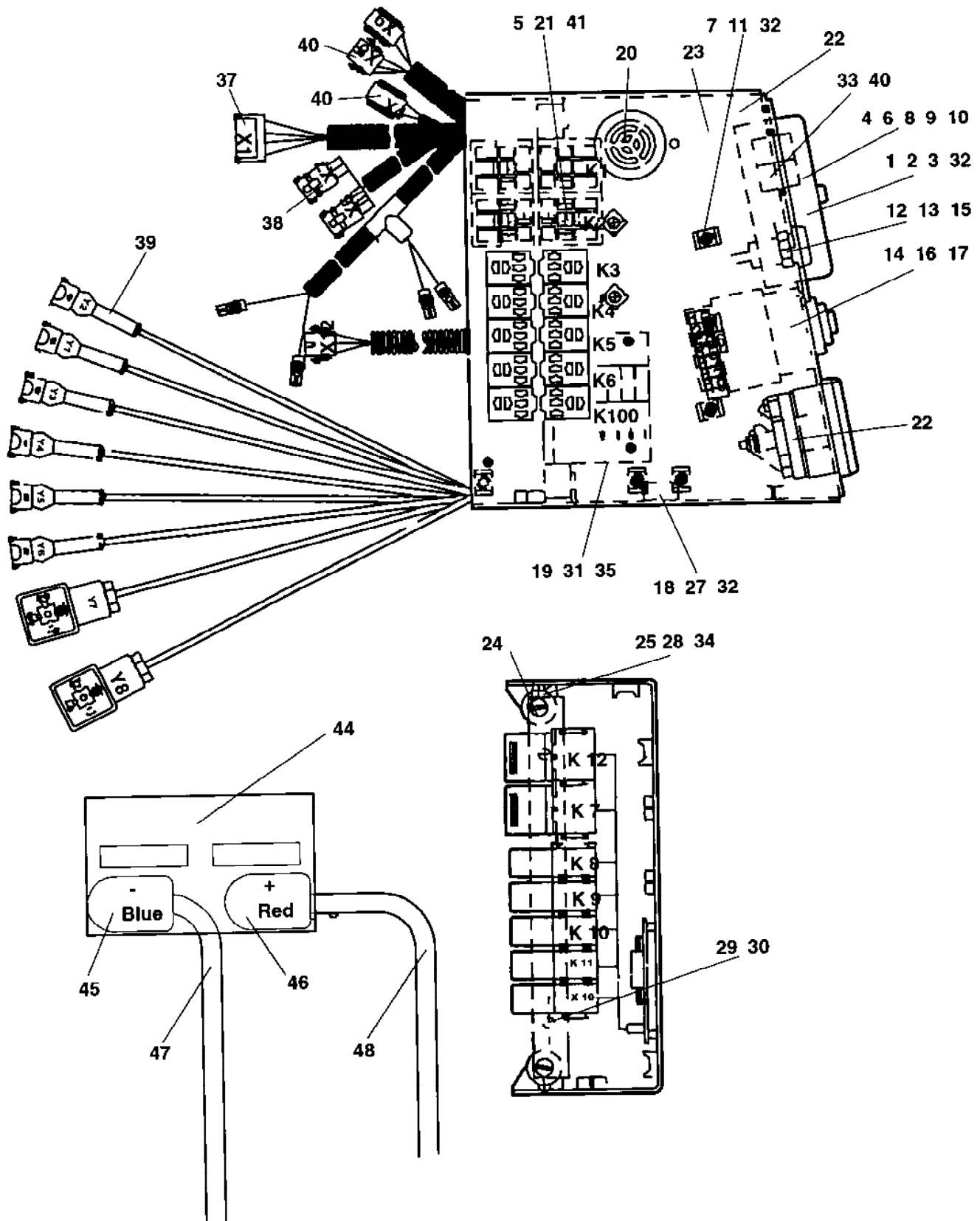
A) Included in 356348

B) Old part

C) New part

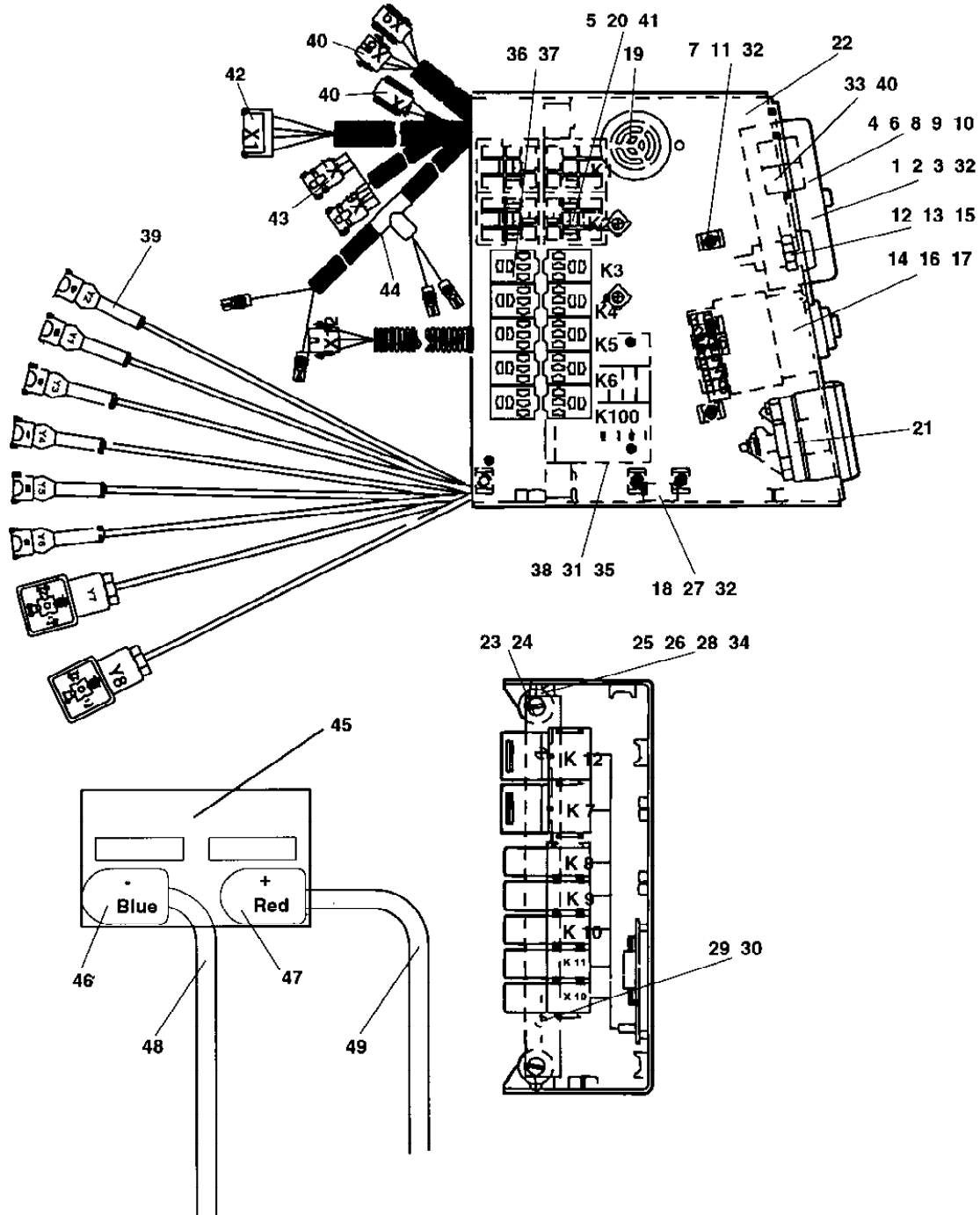


<b>Ref. No.</b>	<b>Part No.</b>	<b>Rem.</b>	<b>Qty</b>	<b>Description</b>	<b>Code</b>
10				Electrical equipment Up to S/N 48610101 ( Page 56 )	
20				Electrical equipment From S/N 48610102 ( Page 58 )	
30				Electrical cables ( Page 60 )	
40				Electrical cables ( Page 62 )	
50				Cable control ( Page 64 )	
60				IR-transmitter ( Page 66 )	
70				IR-receiver ( Page 68 )	



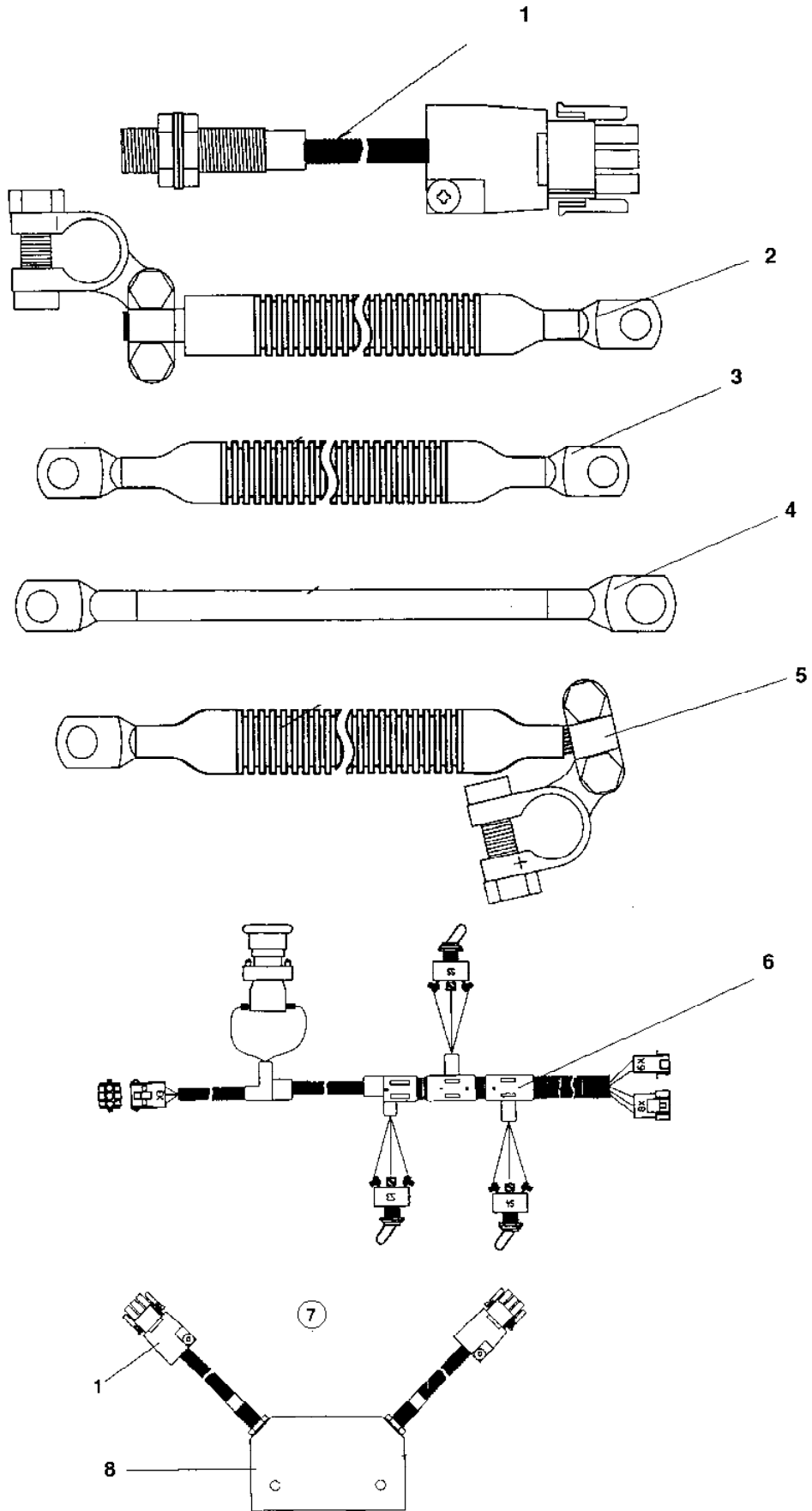
Ref. No.	Part No.	Rem.	Qty	Description	Code
1	901225		1	Fuse 5A	D
2	901227		3	Fuse 10A	D
3	901228		2	Fuse 15A	B
4	901256		1	Fuse box	
5	239642		12	Relay socket	
6	287920		3	Contact	
7	925802		17	Cable ties L=142 mm	
8	239641		1	Receptacle block	
9	287921		1	Connector	
10	287922		1	Connector	
11	287923		9	Cable tie holder	
12	239466		1	Oil pressure lamp	D
13	239463		1	Charge lamp	D
14	238158		1	Ignition switch	D
	238236		1	Ignition key	D
15	985012		2	Bulb	D
16	239651		1	Socket	
17	287924		1	Connector	
18	287925		1	Earth socket	
19	287926		4	Spacer	
20	239877		1	Summer 12V	
21	903956		12	Relay	
22	904980		1	Hour meter	
23	286366		1	Plate	
24	288106		1	Bracket	
25	281783		2	Shock absorber	
27	606001		1	Lock washer	
28	606003		1	Washer	
29	580601		1	Lock nut	
30	903658		1	Screw	
31	904289		1	Screw	
32	904609		1	Screw M4x6 Black	
33	533002		1	Screw	
34	500044		1	Screw M6x8	
35	239643		1	Diode card	
36	287880		1	Cable harness	
37	287881		1	Cable harness	
38	287882		1	Cable harness	
39	287883		1	Cable harness	
40	287884		1	Cable harness	
41	287887		1	Cable harness	
42	570002		3	Nut M4	
43	586002		2	Lock nut M6	
44	904279		1	Battery	
45			1	Battery cable clip	
46			1	Battery cable clip	
47		A	1	Cable	
48		A	1	Cable	

A) See section electrical cable

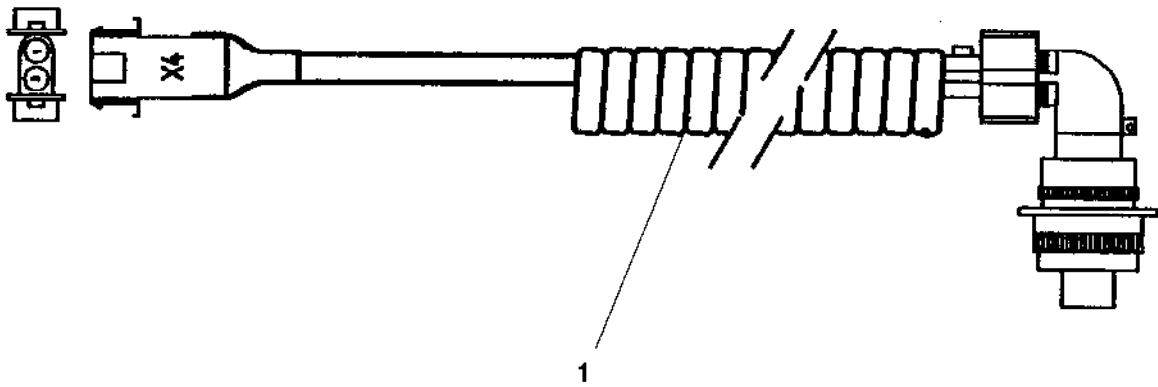


Ref. No.	Part No.	Rem.	Qty	Description	Code
1	901225		1	Fuse 5A	D
2	901227		3	Fuse 10A	D
3	901228		2	Fuse 15A	B
4	901256		1	Fuse box	
5	239642		4	Relay socket	
6	287920		3	Contact	
7	925802		19	Cable ties L=142 mm	
8	239641		1	Receptacle block	
9	287921		1	Connector	
10	287922		1	Connector	
11	287923		11	Cable tie holder	
12	239466		1	Oil pressure lamp	D
13	239463		1	Charge lamp	D
14	238158		1	Ignition switch	D
	238236		1	Ignition key	D
15	985012		2	Bulb	D
16	239651		1	Socket	
17	287924		1	Connector	
18	287925		1	Earth socket	
19	239877		1	Summer 12V	
20	903956		4	Relay	
21	904980		1	Hour meter	
22	286366		1	Plate	
23	381597		1	Bracket	
24	281783		2	Shock absorber	
25	570002		3	Nut M4	
26	586002		2	Lock nut M6	
27	606001		4	Lock washer	
28	606003		4	Washer	
29	586001		2	Lock nut M5	
30	903658		3	Screw	
31	904289		7	Screw	
32	904609		14	Screw M4x6 Black	
33	533002		4	Screw	
34	500044		2	Screw M6x8	
35	287926		4	Spacer	
36	381389		10	Relay holder	
37	381390		10	Relay	
38	239643		1	Diode card	
39	381064		1	Cable harness	
40	381147		1	Cable harness	
41	381065		1	Cable harness	
42	381145		1	Cable harness	
43	381146		1	Cable harness	
44	381144		1	Cable harness	
45	904279		1	Battery	
46			1	Battery cable clip	
47			1	Battery cable clip	
48		A	1	Battery cable	
49		A	1	Battery cable	

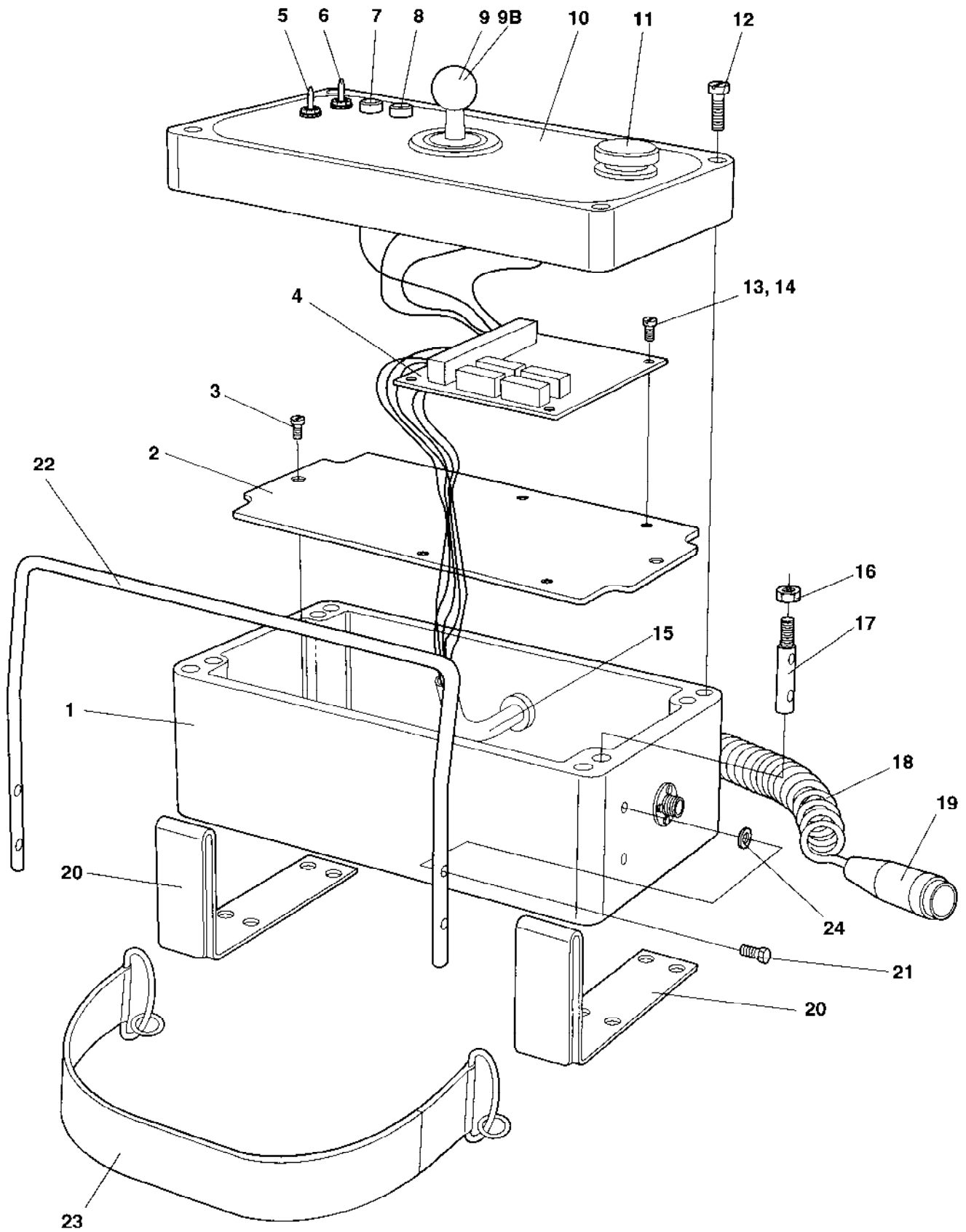
A) See section electrical cable



Ref. No.	Part No.	Rem.	Qty	Description	Code
1	287895		1	Cable Induktive transmitter	
2	287894		1	Cable Battery -	
3	287893		1	Cable Engine	
4	287889		1	Cable Ground	
5	287888		1	Cable Battery +	
6	287891		1	Battery IR emergensy stop	
7	287896		1	Switch, cpl	
8	287897		1	.Plastic part	
9	287895		1	.Cable Induktive transmitter	

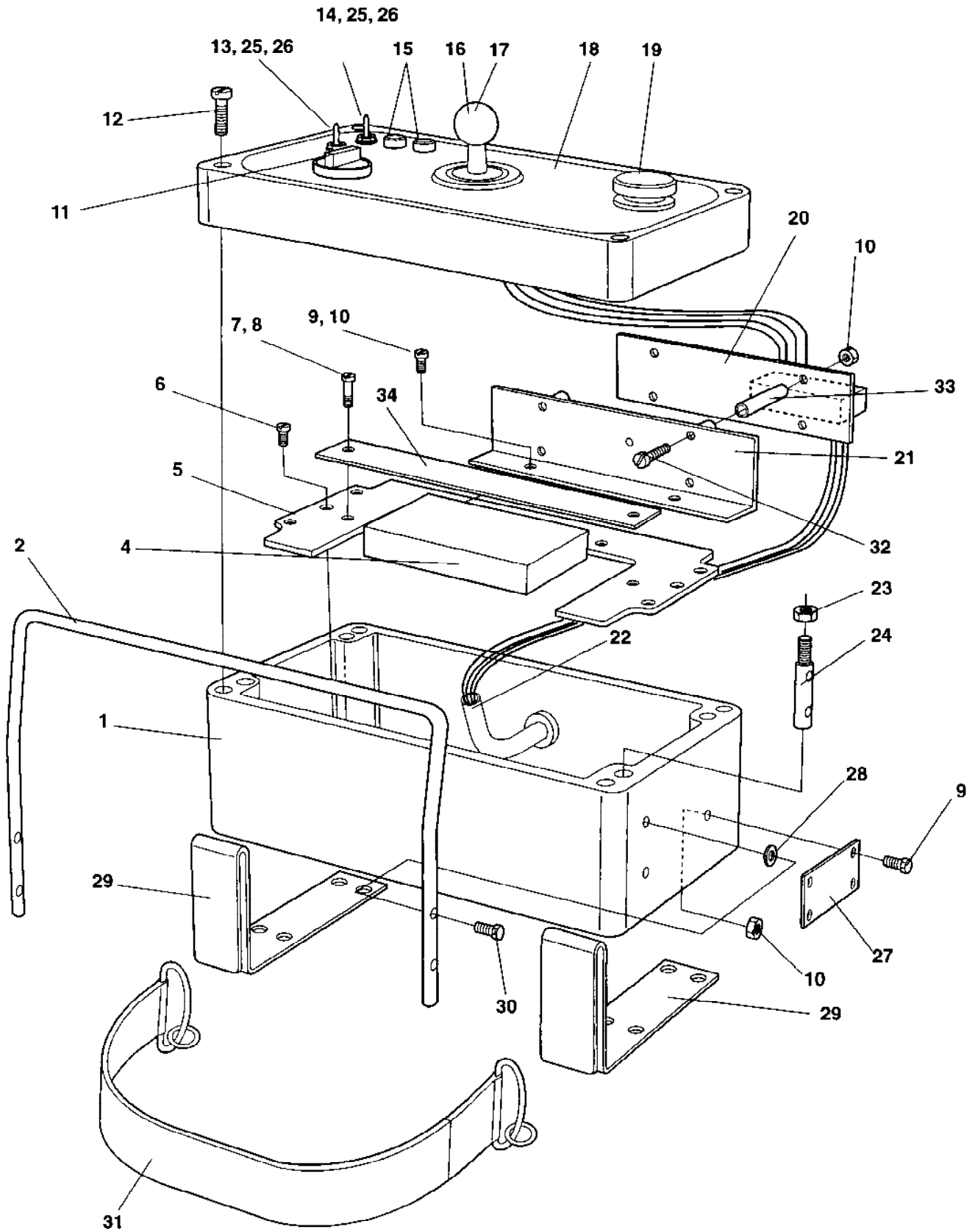


Ref. No.	Part No.	Rem.	Qty	Description	Code
1	287892		1	Cable, charge	



**Cable control**

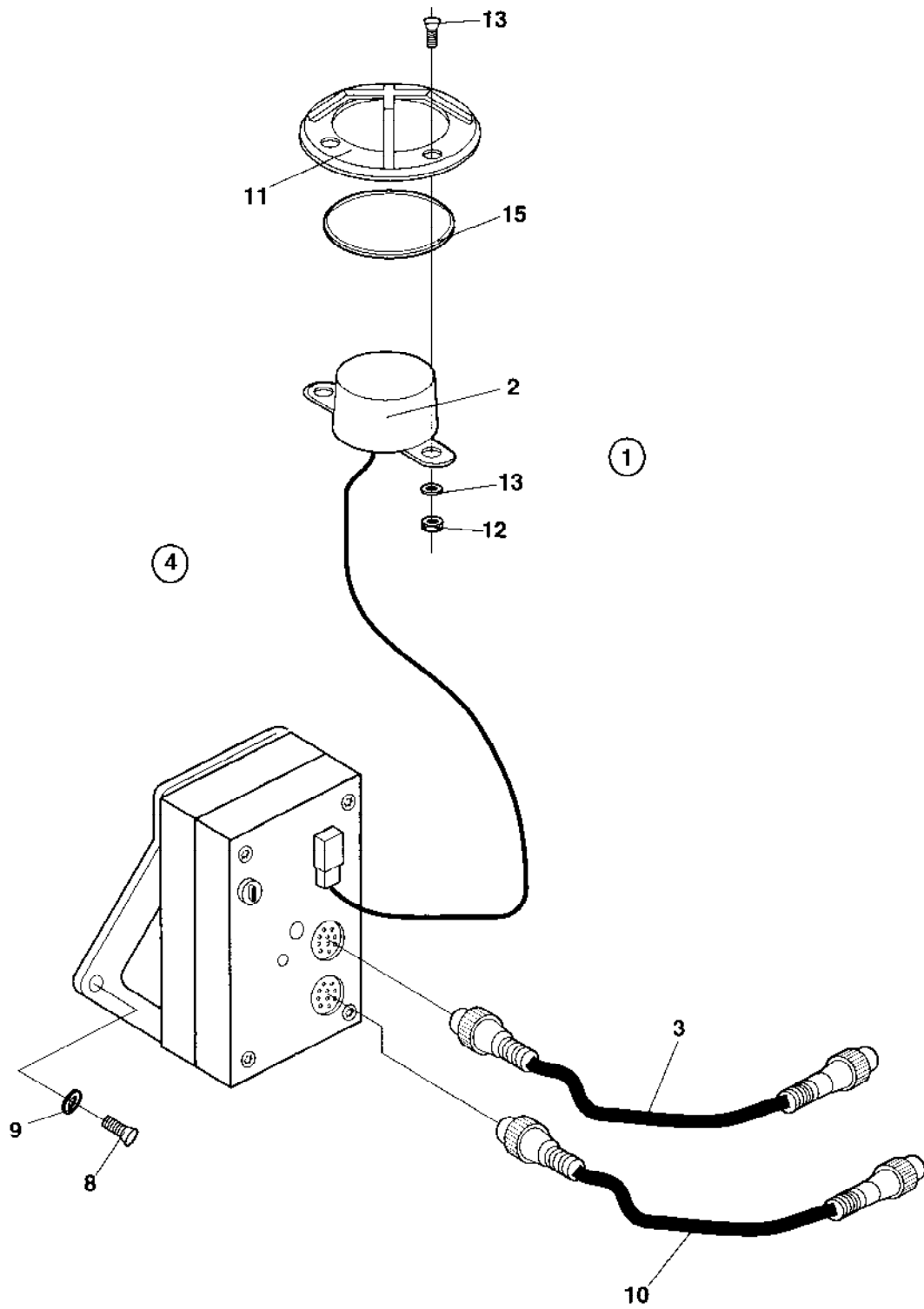
<b>Ref. No.</b>	<b>Part No.</b>	<b>Rem.</b>	<b>Qty</b>	<b>Description</b>	<b>Code</b>
	286384		1	Remote control, cpl	
1	288258		1	.Box	
2	288395		1	.Mounting plate	
3	929038		4	.Screw	
4	288238		1	.Printed card	
5	288266		1	.Switch	B
6	288267		1	.Switch	B
7	288424		1	.Push button	
8	288269		1	.Push button	
9	288270		1	.Joystick	
9-B	239744		1	..Stick	
10	381363		1	.Panel plate	
11	288273		1	.Emergency stop	D
12	923927		2	.Screw	
13	533002		4	.Screw	
14	288394		4	.Spacer	
15	288272		1	.Cable harness	
16	586002		4	.Lock nut M6	
17	288423		2	.Bracket	
18	288264		1	.Cable	
19	288265		1	.Socket	
20	286377		2	.Plate	
21	239870		4	.Screw	
22	288419		1	.Retainer	
23	288421		1	.Neck belt	D
24			4	.Washer	D



Ref. No.	Part No.	Rem.	Qty	Description	Code
	380969		1	IR-transmitter, cpl	
1	287885		1	.Box	
2	288419		1	.Retainer	
3	287913		1	.Window	
4	936900	A	1	.Battery	
	288278	B	1	.Battery	B
5	288482		1	.Plate	
6	929038		4	.Screw	
7	533008		4	.Screw	
8			2	.Spacer	
9	533002		6	.Screw	
10	928927		14	.Lock nut	
11	287916		1	.Switch	
12	923927		2	.Screw	
13	288266		1	.Switch	B
14	288267		1	.Switch	B
15	288269		2	.Push button	
16	288270		1	.Joystick	
17	239744		1	..Stick	
18	286351		1	.Panel plate Up to 48610101	
	381365		1	.Control panel plate, cpl From 48610102	
19	288273		1	.Emergency stop	D
20			1	.Circuit board	D
21	288483		1	.Bracket	
22	287898		1	.Cable harness	
23	586002		4	.Lock nut M6	
24	288423		2	.Bracket	
25	287918		2	.Rubber gasket	
26	287919		2	.Sealing washer	
27	287906		1	.Cover plate	
28	904299		4	.Washer	
29	286377		2	.Plate	
30			4	.Screw	
31	288421		1	.Neck belt	D
32	533004		4	.Screw	
33			4	.Spacer	
34	288486		1	.Holder	

A) 1,2 Ah

B) 3 Ah



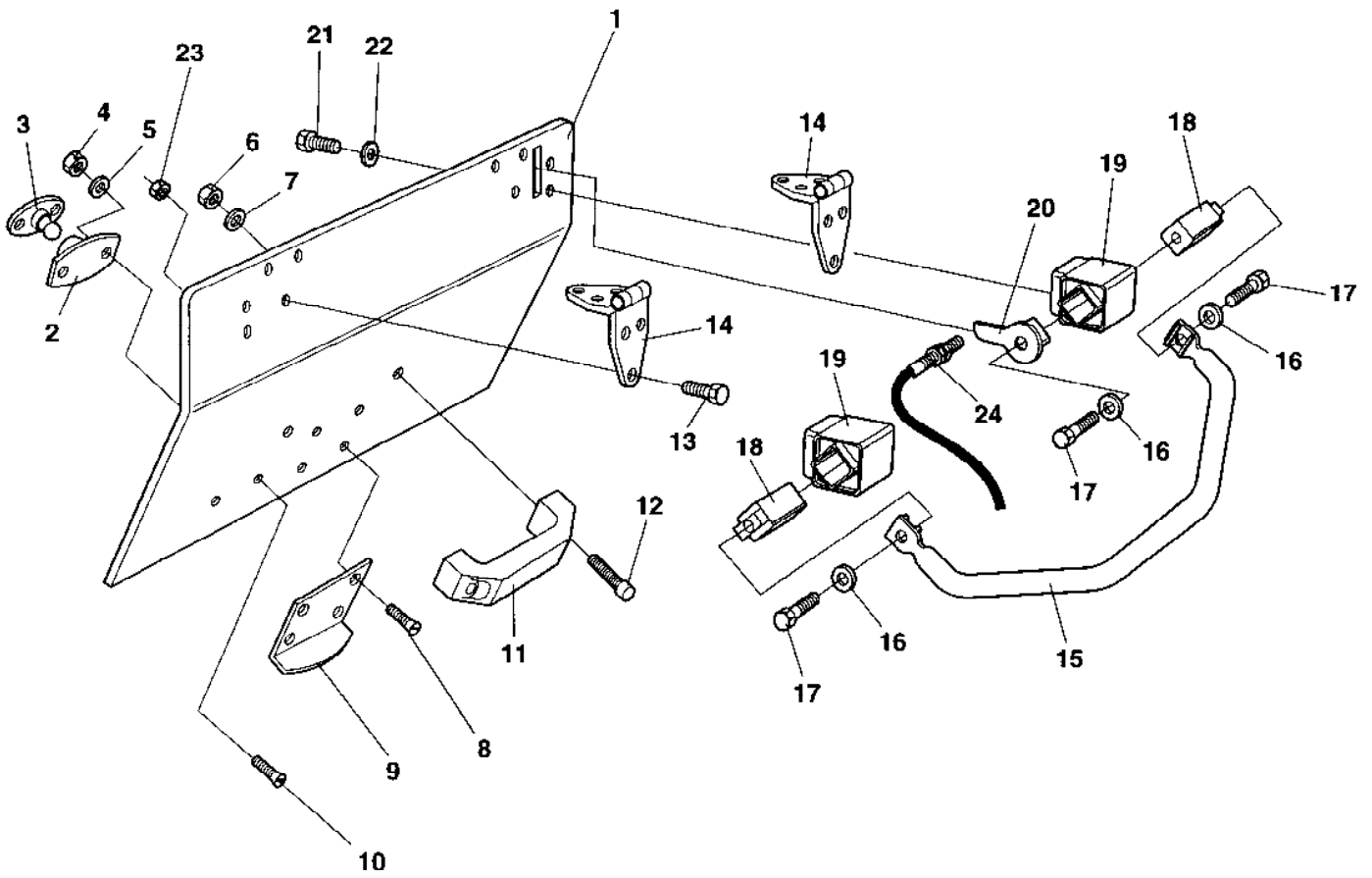
Ref. No.	Part No.	Rem.	Qty	Description	Code
1			1	IR receiver, cpl	
2	239717		1	.IR-eye	
3	381150	B	1	.Cable	
4	380970		1	.IR box, cpl	
8	508041		4	.Screw	
9	904698		4	.Washer 4,3x8x0,8	
10	381066	A	1	.Cable	
11	288463		1	.Cover	
12	570004		4	.Nut M6	
13	928784		4	.Screw	
14	904228		4	.Washer 6,4x12x1,5	
15	160273		1	.O-ring	

A) J2

B) X2



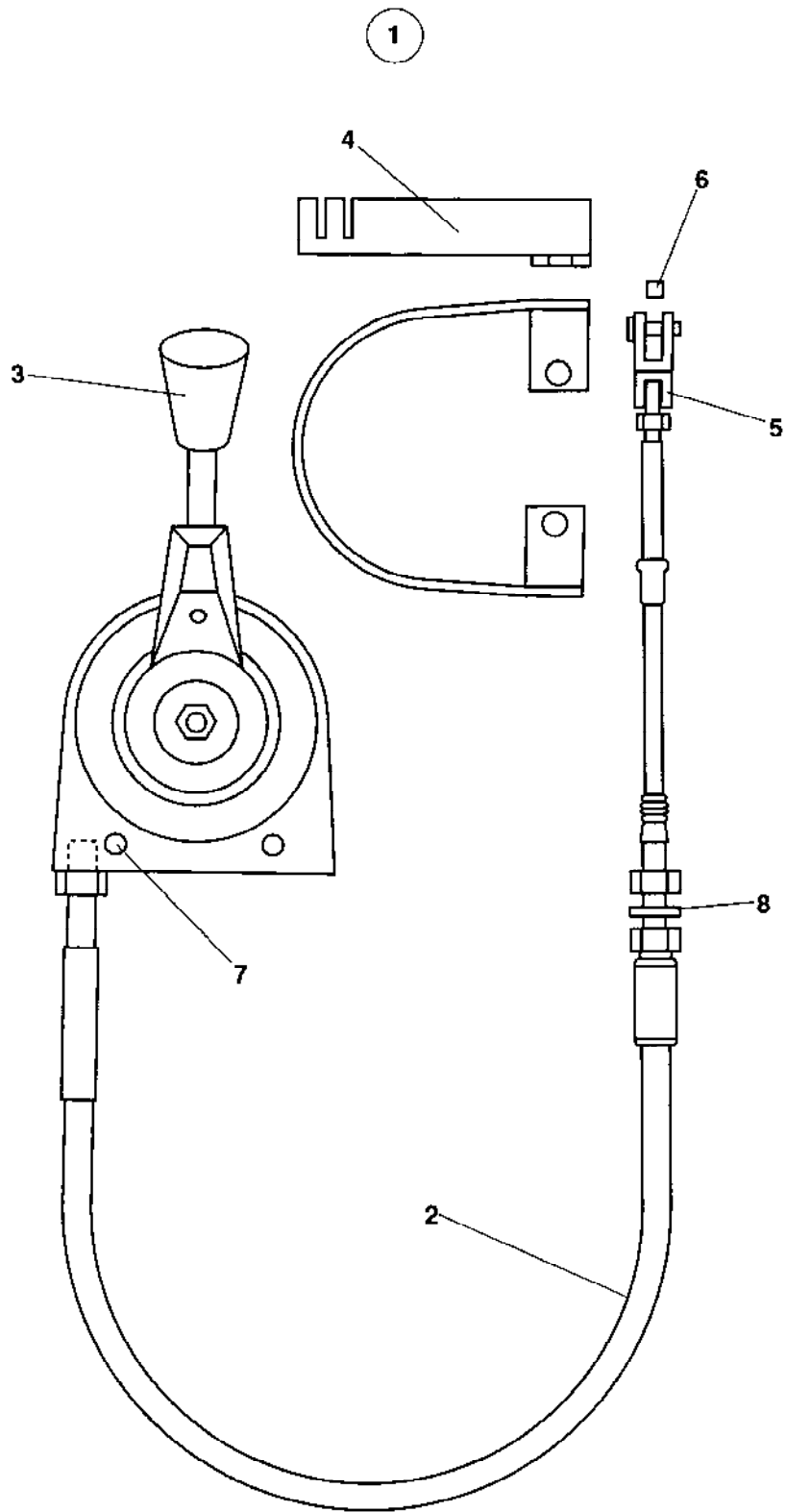
<b>Ref. No.</b>	<b>Part No.</b>	<b>Rem. Qty</b>	<b>Description</b>	<b>Code</b>
10			Push stop, cpl ( Page 72 )	
20			Throttle control ( Page 74 )	
30			Parking brake ( Page 76 )	



**Push stop, cpl**

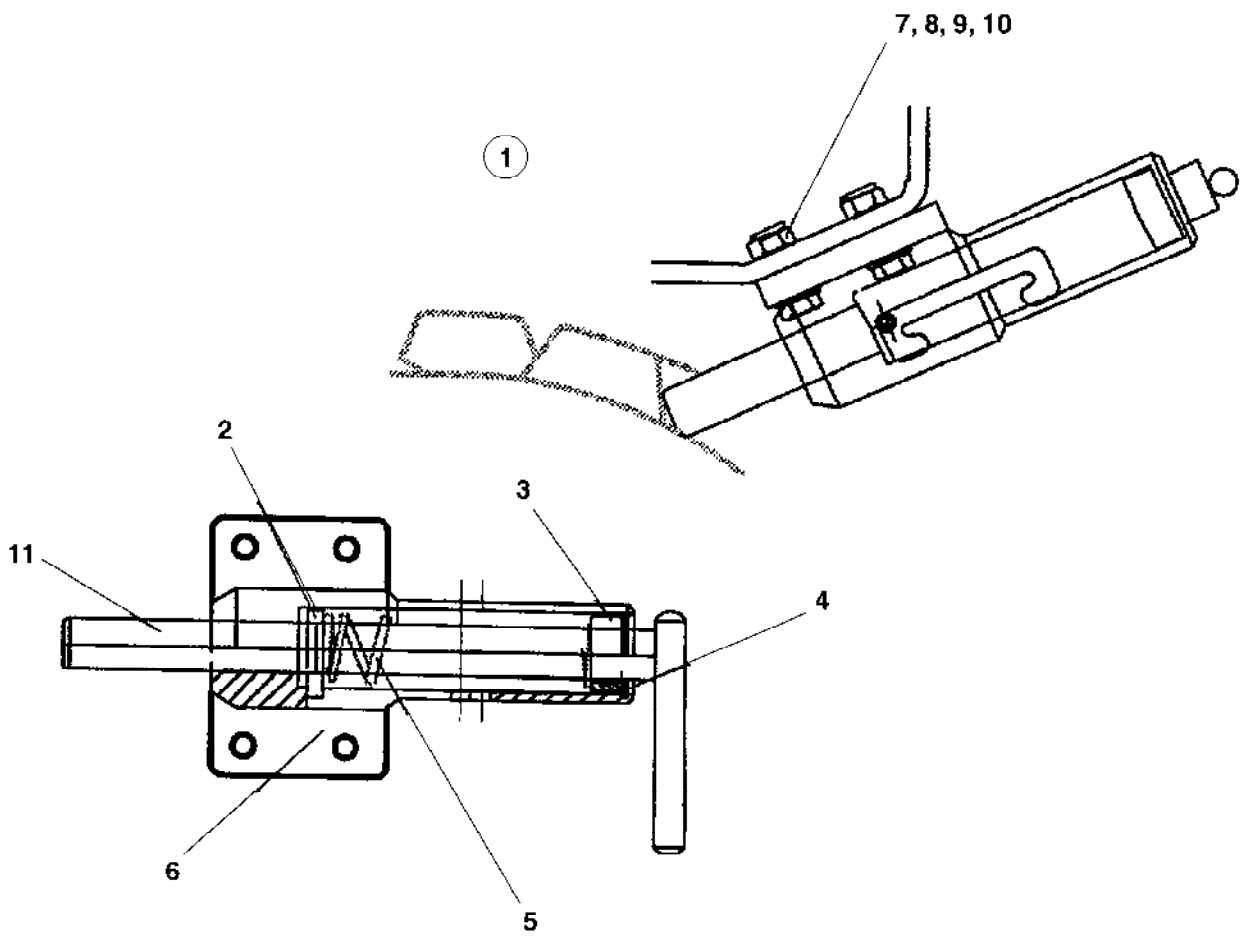
Ref. No.	Part No.	Rem.	Qty	Description	Code
			1	Push stop, cpl	
1	286426-10		1	.Rear cover	
2	450066		1	.Door bumper	D
3	791169		1	.Door bumper	D
4	570003		2	.Nut	
5	904281		2	.Washer 5,3x10x1	
6	570005		2	.Nut M8	
7	615043		2	.Conical spring washer 8,4x18x2	
8	513008		4	.Screw	
9	286981		1	.Bracket	
10	904504		2	.Screw M5 x 18	
11	282284		1	.Grab handle	
12	508048		2	.Screw	
13	925785		6	.Screw	
14	928041		2	.Hinge	D
15	286299		1	.Handle	
16	904567		3	.Washer 10,5x28x6	
17	500028		3	.Screw M10-1,5x25 8,8	
18	286300		2	.Shaft	
19	288317		2	.Shock absorber	
20	286375		1	.Lever	
21	500020		4	.Screw M8-1,25x22 8,8	
22	904556		4	.Washer 8,4x16x3,0	
23	586002		4	.Lock nut M6	
24		A	1	Cable	

A) See section electric equipment cables pos. 1



**Throttle control**

<b>Ref. No.</b>	<b>Part No.</b>	<b>Rem.</b>	<b>Qty</b>	<b>Description</b>	<b>Code</b>
1	370676		1	Throttle control Up to 48610380	
	383315		1	Throttle control From 48610381	
2	903702		1	.Cable Up to 48610380	D
	383393		1	.Cable From 48610381	
3	903701		1	.Control Up to 48610380	
	383394		1	.Control From 48610381	
4	902194		1	.Yoke Up to 48610380	
	382225		1	.Yoke From 48610381	
5	416025		1	.Fork link	
6	901830		1	.Sleeve bearing	
7	500015		2	Screw M6-1x30 8,8	
8	904230		2	Washer 10,5x22x2	

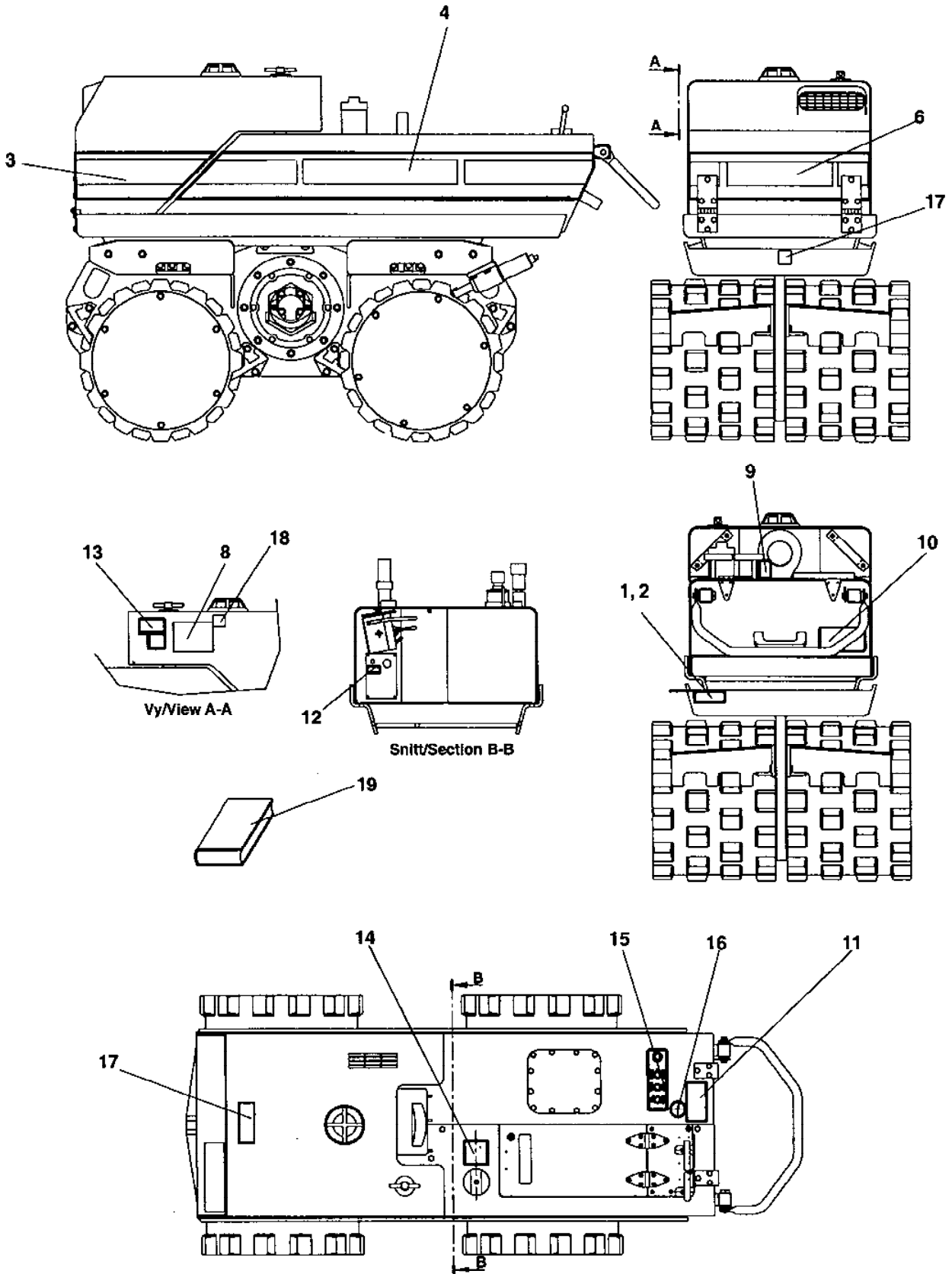


**Parking brake**

<b>Ref. No.</b>	<b>Part No.</b>	<b>Rem.</b>	<b>Qty</b>	<b>Description</b>	<b>Code</b>
1			1	Parking brake, cpl	
2	288446		1	.Pin	
3	288201		1	.Washer	
4	151011		1	.Snap ring	
5	288202		1	.Spring	
6	286327		1	.Brake cylinder	
7	586018		8	.Lock nut M10	
8	615044		8	.Conical spring washer	D
9	500161		4	.Screw M10-1,5x45 8,8	
10	500028		4	.Screw M10-1,5x25 8,8	
11	288200		1	.Piston	



Ref. No.	Part No.	Rem.	Qty	Description	Code
10				Decals and documentation ( Page 80 )	



<b>Ref. No.</b>	<b>Part No.</b>	<b>Rem.</b>	<b>Qty</b>	<b>Description</b>	<b>Code</b>
1	385135SE		1	Identification plate	
2	527002		4	Drive screw	
3	100504282		1	Decal	
4	100504283		1	Decal	
6	100504182		1	Decal	
7	903423		1	Decal "SAFETY"	
8	272373		1	Decal "HYDRAULIC OIL"	
9	281269		1	Decal "LIFT"	
10	288231		1	Decal "BRAKE"	
11	903459		1	Decal "SAFETY"	
12	904367		1	Decal "SAFETY"	
13	903424		1	Decal "HOT SURFACE"	
14	991658		1	Decal "FUEL"	
15	286442		1	Decal	
16	281898		1	Decal, ear protection	
17	382751		2	Decal "TIE DOWN POINT"	
18	791294		1	Decal "Sound power level"	
19			1	Instruction book	
			1	.Instruction book engine	
			1	.Operation IMRP1400XX	
			1	.Spare parts catalogue SMRP1400D	
			1	.Warrenty registration certificate	
21			1	.Warrenty conditions	



## NUMERICAL INDEX

Part Number	Page	Part Number	Page	Part Number	Page
100504182	81	286299	73	287926	57,59
100504282	81	286300	73	288012	7
100504283	81	286302-10	9	288023	17
150028	27	286308	17	288024	17
151011	77	286310	9	288049	27
160009	7	286313-70	15	288053	43,51
160080	9	286316	9	288054	23
160273	69	286327	77	288055	23
162009	17	286332	9	288063	15
162010	17	286346-10	11	288065	27
162011	17,19	286351	67	288066	27
162024	43	286354	35	288067	27
163945	15	286355	11	288068	27
230195	37	286363	35	288069	27
230400	31	286366	57,59	288075	35
232143	17,19	286373	35	288085	43
233304	43	286375	73	288098	31
234990	43	286377	65,67	288105	43
234991	43	286382	15	288106	57
234992	53	286383	15	288110	9
236905	51	286384	65	288115	33
238158	57,59	286387	23	288116	39
238236	57,59	286406	53	288117	39
238360	37	286407	53	288118	39
238378	37	286409	9	288161	47
238380	31	286410	9	288162	47
239463	57,59	286416-10	17	288173	31
239466	57,59	286421-10	19	288182	13
239566	27	286424	15	288184	13
239567	27	286426-10	73	288185	13
239592	33	286434	19	288187	13
239593	33	286435	15	288188	13
239594	33	286442	81	288190	13
239595	35	286478-10	11	288191	13
239596	35	286480-70	15	288194	13
239597	35	286484	53	288200	77
239598	35	286485	53	288201	77
239599	35	286487	15	288202	77
239600	51	286488	15	288204	13
239601	51	286489	15	288217	13
239602	37	286980	19	288231	81
239604	37	286981	15,73	288232	27
239606	37	286982	19	288234	43
239629	17	286983	11	288235	31
239641	57,59	286989	43	288236	31
239642	57,59	286993	9	288238	65
239643	57,59	287336	31	288241	27
239651	57,59	287724	39	288258	65
239673	37	287880	57	288259	9
239674	37	287881	57	288264	65
239676	27	287882	57	288265	65
239677	27	287883	57	288266	65,67
239717	69	287884	57	288267	65,67
239744	65,67	287885	67	288269	65,67
239757	33	287887	57	288270	65,67
239832	7	287888	61	288272	65
239833	7	287889	61	288273	65,67
239870	65	287891	61	288278	67
239877	57,59	287892	63	288298	23
272373	81	287893	61	288299	23
281118	31	287894	61	288301	37
281269	81	287895	61	288317	73
281783	57,59	287896	61	288321	35
281898	81	287897	61	288329	33
282284	9,11,73	287898	67	288332	39
283711	37	287906	67	288339	7
286196	7	287913	67	288341	39
286197	7	287916	67	288342	39
286282	13	287918	67	288343	13
286283	13	287919	67	288344	13
286286	23	287920	57,59	288345	13
286287	23	287921	57,59	288346	13
286288	23	287922	57,59	288348	41,49
286289	23	287923	57,59	288351	13
286290	23	287924	57,59	288352	23
286291	23	287925	57,59	288353	39

SMRP1400-1EN1

NUMERICAL INDEX

Part Number	Page	Part Number	Page	Part Number	Page
288354	39	381681	11	508048	9,73
288356	9	381721	25	508056	11
288359	23	381722	25	513003	9
288378	43	381737	25	513008	9,73
288380	13	381803	31	513013	43
288384	43	381946	9	513017	9
288385	43,53	382120	11	527002	81
288394	65	382225	75	533002	57,59
288395	65	382610	53		,65,67
288401	15	382751	81	533004	67
288408	53	383315	75	533008	67
288409	9	383393	75	570002	57,59
288416	31	383394	75	570003	11,73
288417	31	383563	43	570004	9,39,69
288418	31	383839	31	570005	9,11,35
288419	65,67	384952	43		,73
288420	35	385041	15	570008	17
288421	65,67	385135SE	81	580601	57
288423	65,67	385227	43	586001	11,53
288424	65	385450	31		,59
288432	53	416025	75	586002	9,57,59
288446	77	450066	73		,65,67
288447	37	450067	15		,73
288450	9,39	482944	43	586003	15,37
288451	53	483159	43,47	586018	15,25
288459	17	483233	43		,43,77
288460	17	483253	43	586019	15
288461	9	483256	43	600006	33
288463	69	483257	43	606001	57,59
288469	17	483258	43	606003	57,59
288474	19	483259	47	615043	73
288475	19	483260	47	615044	77
288478	17	483261	47	624016	11
288482	67	483263	47	628025	27
288483	67	483264	47	747282	31,37
288486	67	483318	47	748115	37
297018	39	483319	43	791146	43
313008	35	483320	43	791147	43
313041	47	483362	43	791168	11
313121	33	483363	43	791169	73
330171	37	483364	43	791182	33
330438	43	483368	43	791294	81
334041	37	483369	53	900993	9
334116	43	483436	43	901121	37
334156	43	483437	43	901225	57,59
334234	43	483443	43	901227	57,59
334235	43,47	500007	11	901228	57,59
334236	43	500015	39,75	901256	57,59
334237	43	500020	73	901830	53,75
334238	47	500022	15	902194	75
334520	43	500023	47	902209	31
334563	43	500024	37	902287	31
356348	53	500028	15,17	902398	49
370676	75		,19,73	902520	15,37
373304	19		,77	902558	15
373476	13	500029	7,9,43	902866	19
380557	25	500030	15,25	903192	15
380558	25	500031	9	903233	27
380969	67	500042	33	903386	31
380970	69	500044	57,59	903423	81
381064	59	500046	27	903424	81
381065	59	500047	23	903459	81
381066	69	500048	9	903658	57,59
381144	59	500053	17	903701	75
381145	59	500080	53	903702	75
381146	59	500092	31	903735	23
381147	59	500161	25,77	903956	57,59
381150	69	500186	43	904228	9,43,69
381363	65	500188	31,35	904229	9,15,35
381365	67	500194	27		,37
381389	59	500205	23	904230	7,9,15
381390	59	500296	31		,19,25
381587	25	508002	39		,31,43
381588	25	508029	27,33		,51,75
381589	25		,51	904231	15,23
NI 2 381597	59	508041	69	904232	7,9

## NUMERICAL INDEX

Part Number	Page	Part Number	Page	Part Number	Page
904233	23	937669	53		
904279	57,59	938222	53		
904281	11,53	938313	37		
	,73	938314	37		
904289	57,59	939230	51		
904299	67	985012	57,59		
904367	81	991658	81		
904375	17				
904504	11,73				
904556	73				
904557	27				
904567	73				
904609	57,59				
904639	9				
904698	69				
904734	11				
904817	17				
904937	53				
904980	57,59				
909528	51				
909659	49				
909661	49				
909662	49				
909663	49				
909666	49				
909681	49				
909741	31				
912453	37				
923405	53				
923927	65,67				
924762	7				
925785	11,15				
	,19,73				
925802	57,59				
928041	73				
928381	39				
928444	7				
928632	11				
928784	69				
928849	23				
928927	67				
929038	65,67				
929164	15				
935377	17				
935858	43				
935973	49				
935975	49				
935976	49				
935977	49				
935978	49				
935979	49				
935981	49				
935982	49				
935983	49				
935984	49				
935986	49				
935987	49				
935988	49				
935989	49				
935990	49				
935991	49				
935992	49				
935993	49				
935994	49				
935995	49				
935996	49				
935997	49				
935998	49				
935999	49				
936001	49				
936002	49				
936003	49				
936012	31				
936013	31				
936900	67				
937668	53				

