

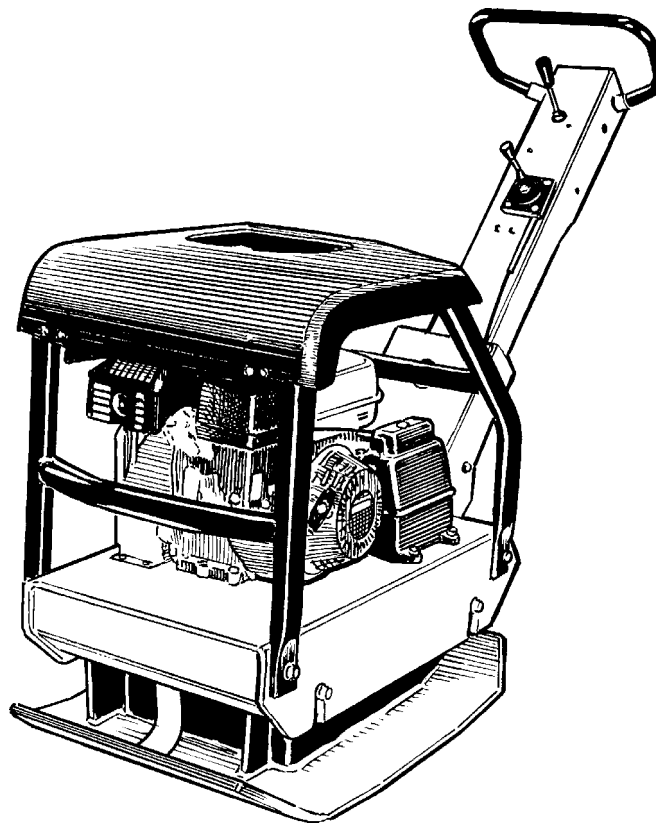
# **TREMIX**

## **Forward and reverse soil compactor**

### **MV 220**

## **SPARE PARTS CATALOGUE**

**SMV220-1EN0**



**TREMIX®**

Metso Construction Equipment AB  
Stensåtravägen 9, Box226  
SE- 127 24 Skärholmen, Sweden  
Tel: +46 8 603 32 00    Telefax: +46 8 646 72 61





**Forward and reverse soil compactor  
MV 220**

**Spare Parts Catalogue**

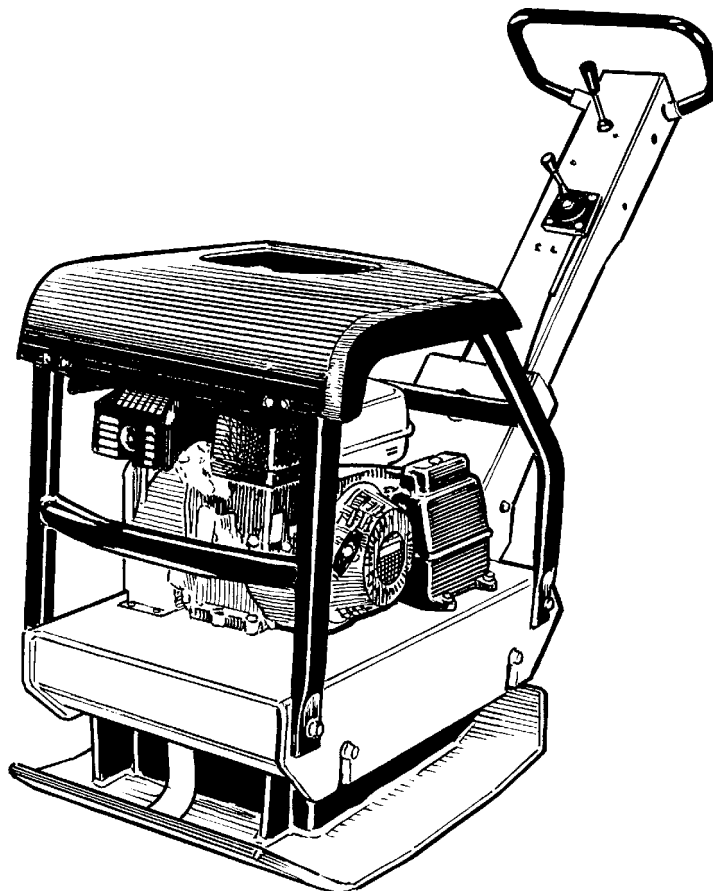
**SMV220 -1EN0**

*Engines:*

*Honda GX200*

*Published catalogue issues valid for these compactors:*

<i>Catalogue</i>	<i>Issue date</i>
<i>SMV220-1EN0</i>	<i>2003-01</i>





## RESERVDLSBESTÄLLNING

Följande uppgifter ska lämnas vid beställning av reservdelar för att undvika leveransfel:

1. Maskintyp.
2. Vältensserienummer.
3. Antal av önskad reservdel.
4. Reserdelens artikelnummer.
5. Reservdelens benämning.
6. Måttuppgifter vid beställning av metervara.

## ERSATZTEILBESTELLUNG

Zur Vermeidung von Fehllieferungen sind bei der Bestellung von Ersatzteilen folgende Angaben zu machen:

1. Maschinentyp.
2. Herstellungsnummer.
3. Bestellmenge. (Quantity)
4. Ersatzteilnummer. (Part N°)
5. Ersatzteilbenennung. (Denomination)
6. Massangaben bei Bestellung von Meterware.

## PEDIDO DE RECAMBIOS

Para evitar errores en las entregas, deberán indicarse los siguientes datos al hacer un pedido de recambios:

1. Tipo de máquina.
2. Número de serie.
3. Cantidad de piezas deseadas. (Quantity)
4. Número de artículo de la pieza de recambio. (Part N°)
5. Denominación de la pieza. (Denomination)
6. Indíquese la medida al solicitar un artículo que se expide por metros.

## ORDERING SPARE PARTS

To avoid errors in delivery, please give the following information when ordering spare parts:

1. Type of machine.
2. Roller serial number.
3. Quantity required.
4. Part number.
5. Parts denomination.
6. Dimensions when ordering per length.

## ORDINI DI RICAMBI

Per evitare errori nelle consegne di ricambi, Vi preghiamo di comunicarci le seguenti informazioni al momento dell'ordinazione:

1. Tipo di macchina.
2. Numero di serie della macchina.
3. Quantità dei pezzi desiderati. (Quantity)
4. Numero di codice del pezzo. (Part N°)
5. Descrizione del pezzo di ricambio. (Denomination)
6. Misura, in caso di ordine per metro.

## COMMANDE DE PIÈCES DE RECHANGE

Les indications suivantes doivent être fournies lors de la commande de pièces de rechange, afin d'éviter toute erreur de livraison:

1. Type de machine.
2. Numéro de série.
3. Quantité désirée de pièce de rechange. (Quantity)
4. Numéro de la pièce de rechange. (Part N°)
5. Dénomination de la pièce de rechange. (Denomination)
6. Longueur en cas de commande au mètre.

**YOUR AGENT/DEALER:**





## PÄRMETIKETT

För att undvika fel vid reservdelsbeställning finns här nedan två etiketter som passar i fickorna på pärmarnas ryggar. På dessa kan man se från vilket vältnummer av aktuell maskin reservdelskatalogen gäller. Gör så här:

1. Tag denna sida ur pärmen.
2. Klipp ut etiketten till **VÄNSTER** (1) och sätt in den i fickan på **DENNA** pärmens rygg.
3. Finns det en etikett till **HÖGER** (2), kan denna användas på pärmen för **FÖREGÅENDE** utgåva av denna katalog.
4. Kasta detta papper.

## KATALOG-BESCHRIFTUNG

Zur Vermeidung von Fehlern bei der Ersatzteilbestellung benutzen Sie bitte die unteren Beschriftungen, um die Kataloge auf der Rückseite zu kennzeichnen. Auf der Beschriftung ist angegeben, für welche Maschinennummern der jeweilige Katalog gültig ist. Ablauf:

1. Nehmen Sie dieses Blatt aus dem Katalog.
2. Schneiden Sie die **LINKE** Beschriftung (1) aus. Schieben Sie die Beschriftung in die tasche auf **DEM** Katalogrücke.
3. Sollte die Beschriftung unten **RECHTS** (2) mitgeliefert werden, kennzeichnen Sie damit bitte die **ÄLTERE** Ausführung dieses Kataloges.
4. Den Rest dieses Blattes bitte vernichten.

## ETIQUETA PARA LA CARPETA

Para evitar errores al pedir repuestos utilicen las etiquetas abajo descritas para identificar los catálogos en la parte trasera de la carpeta. En la etiqueta se ven los números de referencia de la serie para la cual es válido el catálogo. Instrucciones:

1. Quitar esta página de la carpeta.
2. Corta la etiqueta **IZQUIERDA** (1) y ponerla en **ESTA** carpeta en la parte trasera.
3. Si hay una etiqueta en la parte **DERECHA** (2) se puede utilizar en la carpeta para el catálogo que **PRECEDE** a esta.
4. Tirar esta hoja.

## BINDER LABEL

To avoid errors when ordering spare parts use the labels below to identify the catalogues on the back of the binder. The label contain the serial number range for which the catalogue is valid. Do like this:

1. Remove this page from the binder.
2. Cut out the **LEFT** label (1) and put it on **THIS** binders back.
3. If there is a label to the **RIGHT** (2), it can be used on the binder for **PRECEDING** issue of this catalogue.
4. Throw away this paper.

## ETICHETTAPOSTASULRACCOGLITORE

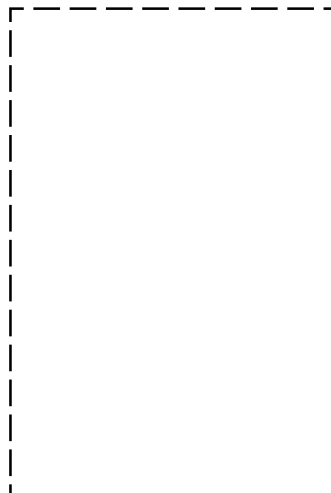
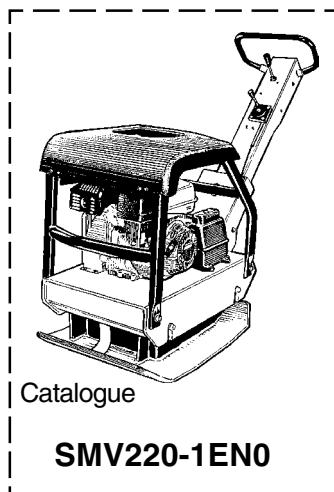
Per evitare errori quando ordinate pezzi di ricambio, usate le etichette in calce che servono ad identificare i cataloghi sul retro del raccoglitore. L'etichetta indica il numero di matricola delle macchine prese in considerazione nel catalogo.

1. Rimuovete questa pagina dal raccoglitore.
2. Ritagliate l'etichetta posta a **SINISTRA** (1) e ponetela sul retro **DEL** raccoglitore.
3. Se trovate anche un'etichetta sulla **DESTRA** (2), ritagliatela e ponetela sul raccoglitore relativo alla **PRECEDENTE** edizione del catalogo.
4. Distruggete questo foglio.

## ETIQUETAGE DU CATALOGUE

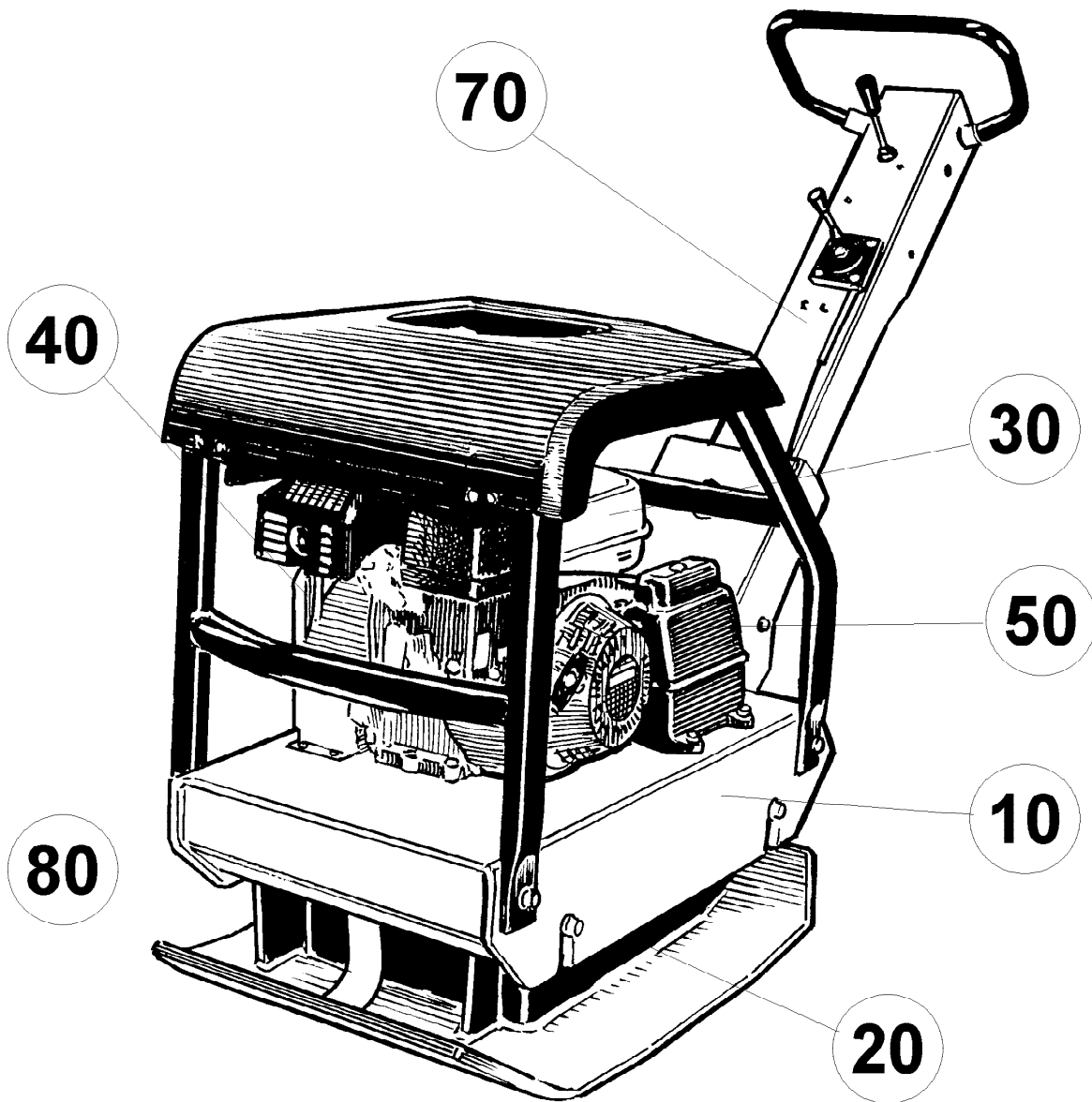
Afin d'éviter des erreurs lors de commandes de pièces de rechange, nous vous conseillons d'apposer les marquages ci-dessous à l'arrière du classeur, pour identifier les catalogues. Ce marquage indique les numéros de série pour lesquels le catalogue est adapté. Il convient de procéder de la façon suivante:

1. Retirez cette page du classeur.
2. Découpez l'étiquette de **GAUCHE** (1), et apposez-la à l'arrière de **CE** catalogue.
3. Si il y a une étiquette à **DROITE** (2), vous pourrez l'apposer sur le classeur de l'édition **PRECEDENTE** du catalogue.
4. Détruire cette feuille.





<b>MV220</b> .....	<b>2</b>
<b>Ground plate, engine plate and frame</b> .....	<b>4</b>
Ground plate, engine plate and frame .....	6
<b>Eccentric element</b> .....	<b>8</b>
Eccentric element .....	10
<b>Engine and engine installation</b> .....	<b>12</b>
Engine Honda GX200 .....	14
Engine installation .....	16
<b>Power transmission</b> .....	<b>18</b>
Power transmission .....	20
<b>Hydraulic system</b> .....	<b>22</b>
Hydraulic system .....	24
Hydraulic oil tank .....	26
<b>Handle and throttle control</b> .....	<b>28</b>
Handle and throttle control .....	30
<b>Decals and documentation</b> .....	<b>32</b>
Decals and documentation .....	34

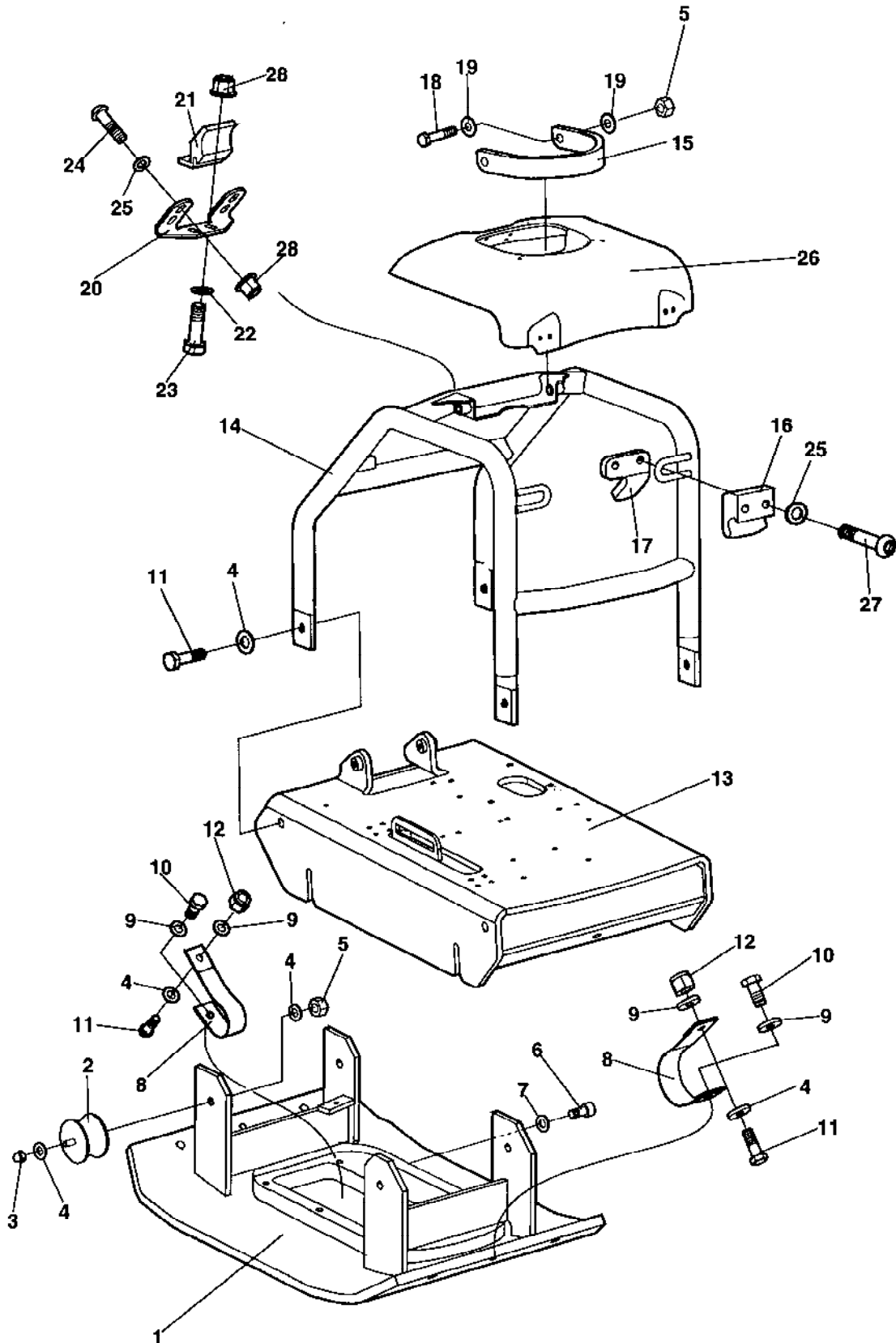


<b>Ref. No.</b>	<b>Part No.</b>	<b>Rem. Qty</b>	<b>Description</b>	<b>Code</b>
10			Ground plate, engine plate and frame ( Page 4 )	
20			Eccentric element ( Page 8 )	
30			Engine and engine installation ( Page 12 )	
40			Power transmission ( Page 18 )	
50			Hydraulic system ( Page 22 )	
70			Handle and throttle control ( Page 28 )	
80			Decals and documentation ( Page 32 )	



**Ground plate, engine plate and frame**

<b>Ref. No.</b>	<b>Part No.</b>	<b>Rem.</b>	<b>Qty</b>	<b>Description</b>	<b>Code</b>
10				Ground plate, engine plate and frame ( Page 6 )	

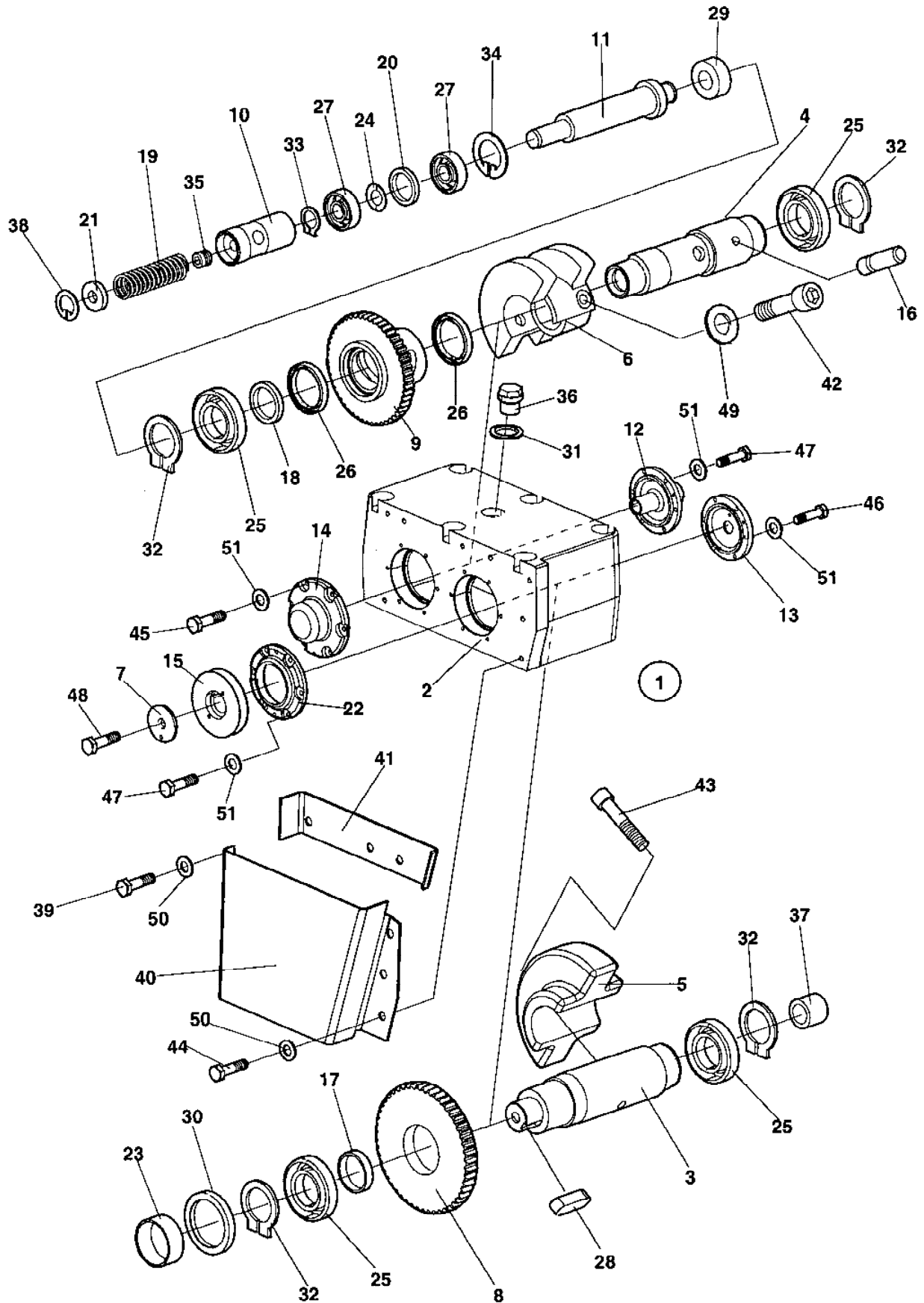


**Ground plate, engine plate and frame**

<b>Ref. No.</b>	<b>Part No.</b>	<b>Rem.</b>	<b>Qty</b>	<b>Description</b>	<b>Code</b>
1	280621		1	Ground plate	
2	280750		4	Shock absorber	B
3	581013		4	Nut	
4	904231		12	Washer 13x24x2	
5	570007		6	Nut	
6	508028		1	Screw	
7	747541		1	Washer	D
8	100505036		2	Strap	D
9	924543		4	Washer	
10	500051		2	Screw M12-1,75x25 8,8	
11	500037		6	Screw M12-1,75x35 8,8	
12	586019		2	Lock nut M12	
13	386986		1	Engine base	
14	387113		1	Protective frame	
15	284237		1	Lifting lug	
16	387260		2	Clip	
17	387705		2	Stop	
18	500049		2	Screw M12-1,75x60 8.8	
19	904742		4	Washer	
20	387261		1	Bracket	
21	387259		1	Clip	
22	904228		2	Washer 6,4x12x1,5	
23	500040		2	Screw M6-1x20 8,8	
24	791524		4	Screw	
25	904655		8	Washer	
26	387257		1	Hood	
27	904798		4	Screw	
28	902285		6	Lock nut M6	



Ref. No.	Part No.	Rem. Qty	Description	Code
10			Eccentric element ( Page 10 )	

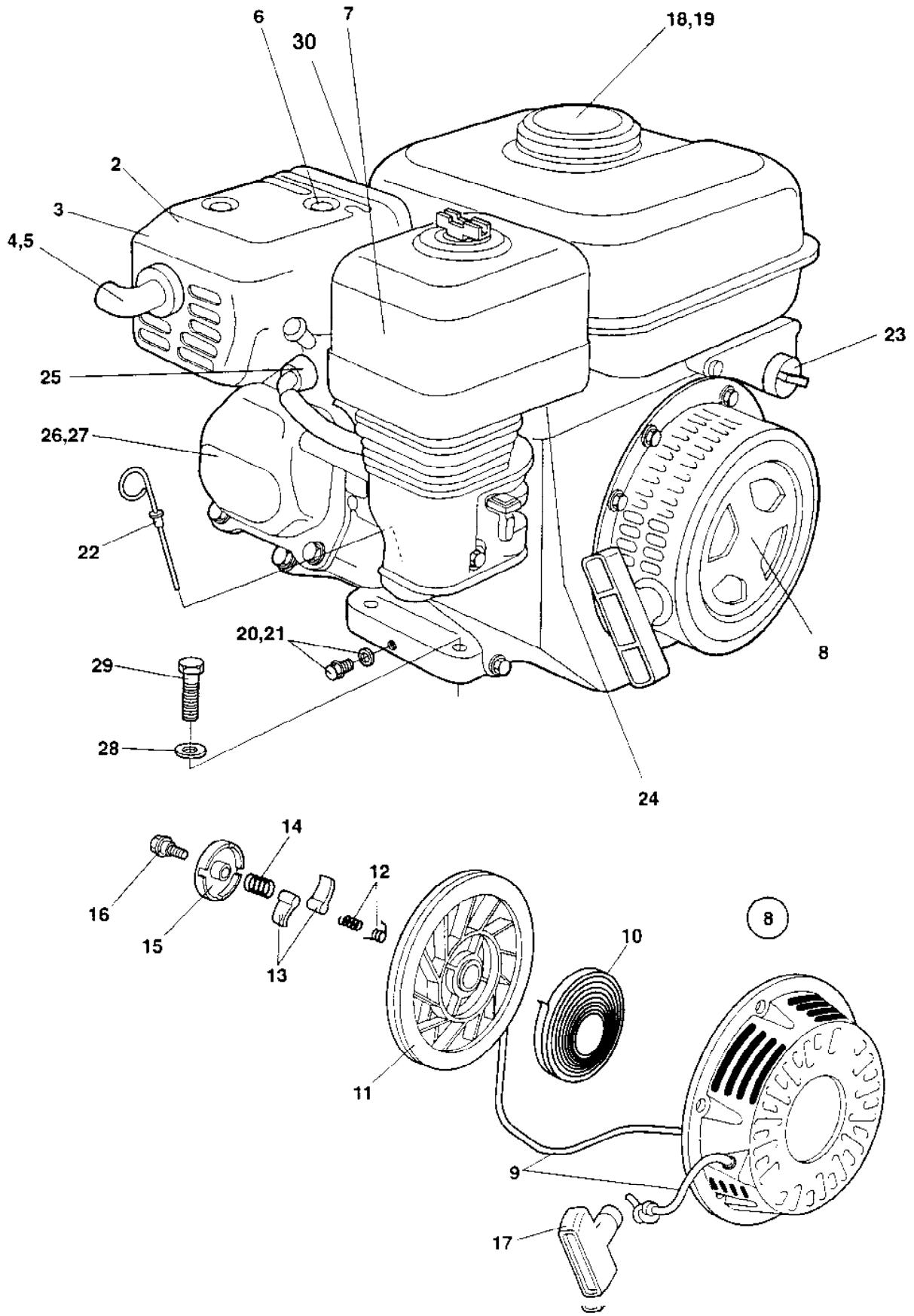


Ref. No.	Part No.	Rem.	Qty	Description	Code
1			1	Eccentric element, cpl	
2	280662		1	.Eccentric housing	
3	280630		1	.Shaft	
4	280631		1	.Shaft	
5	280663		1	.Eccentric weight	D
6	280669		1	.Eccentric	D
7	280654		1	.Washer	
8	280670		1	.Gear	D
9	280659		1	.Changer	D
10	280637		1	.Piston	
11	280638		1	.Piston	
12	280639		1	.Cylinder	
13	280640		1	.Cover	
14	280642		1	.Cover	
15	280643		1	.Pulley	
16	280644		1	.Pin	
17	280645		1	.Spacer ring	
18	280646		1	.Spacer	
19	280677		1	.Spring	
20	280647		1	.Spacer ring	
21	280648		1	.Washer	
22	280850		1	.Cover	
23	928795		1	.Sleeve	
24	929291		10	.Cup spring	
25	903363		4	.Ball bearing	D
26	929287		2	.Ball bearing	D
27	929286		2	.Ball bearing	D
28	350029		1	.Key	
29	281276		1	.Sealing ring	
30	928794		1	.Sealing ring	D
31	162011		1	.Washer, sealing	D
32	150017		4	.Retaining ring	D
33	150002		1	.Retaining ring	
34	151039		1	.Retaining ring	
35	928241		1	.Screw	
36	232143		1	.Plug	
37	928893		1	.Sleeve	
38	151007		1	.Retaining ring	
39	500022		2	.Screw M8-1,25x30 8,8	
40	280871		1	.V-belt cover	
41	280858		1	.V-belt protection, inner	
42	508031		1	.Screw	
43	508042		1	.Screw	
44	500053		6	.Screw M8-1,25x20 8,8	
45	500013		6	.Screw M6-1x16 8,8	
46	500075		6	.Screw M6-1x25 8,8	
47	500040		12	.Screw M6-1x20 8,8	
48	500028		1	.Screw M10-1,5x25 8,8	
49	904231		1	.Washer 13x24x2	
50	904229		8	.Washer 8,4x16x1,5	
51	904228		12	.Washer 6,4x12x1,5	
52	929454		6	Screw	
53	904213		6	Washer 13x30x4	



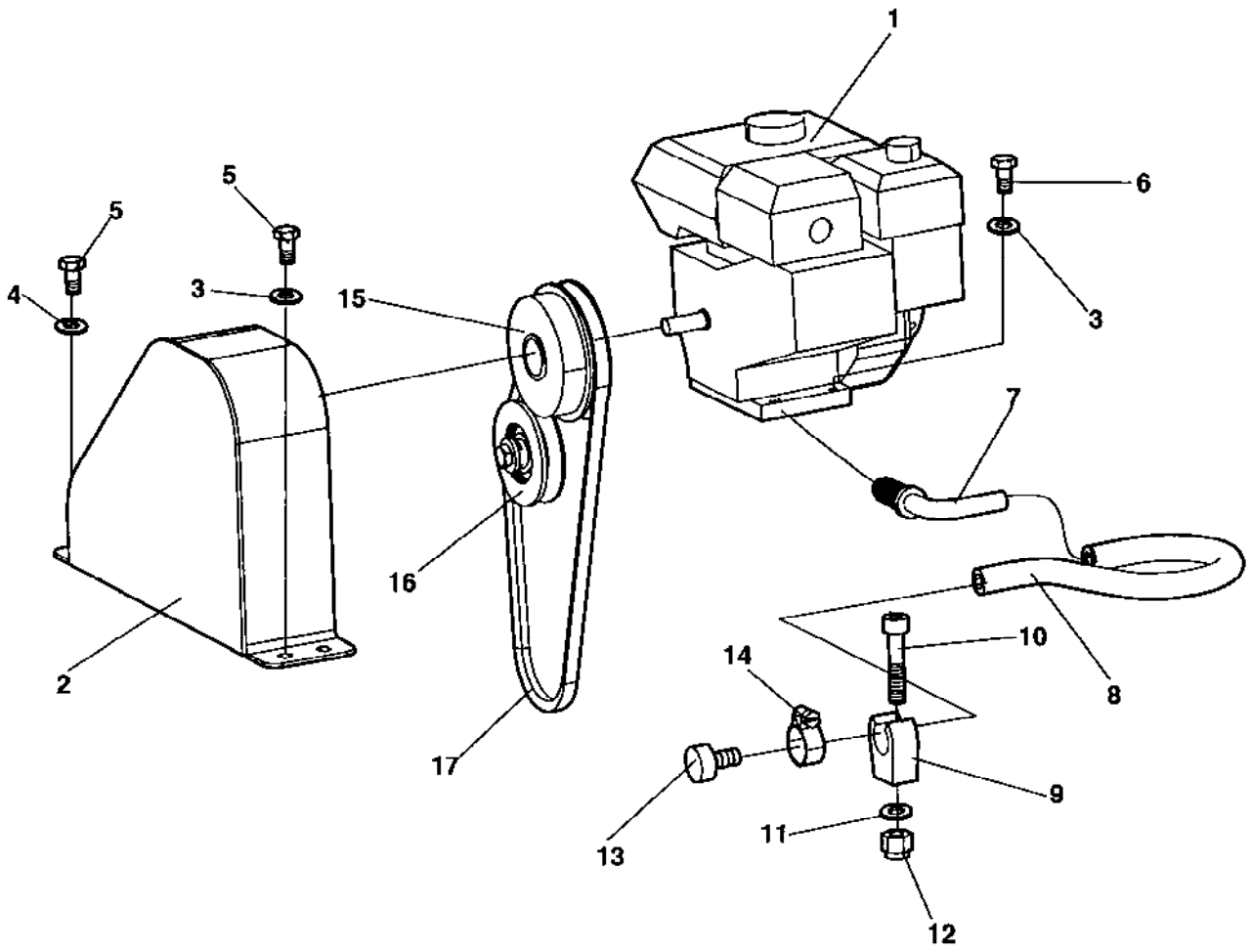
<b>Ref. No.</b>	<b>Part No.</b>	<b>Rem. Qty</b>	<b>Description</b>	<b>Code</b>
10			Engine Honda GX200 ( Page 14 )	
20			Engine installation ( Page 16 )	

1



<b>Ref. No.</b>	<b>Part No.</b>	<b>Rem.</b>	<b>Qty</b>	<b>Description</b>	<b>Code</b>
1	387979		1	Engine, cpl	
2	239889		1	.Muffler	
3	239890		1	.Muffler cover	
4				Not used on this model	
5				Not used on this model	
6	239063		1	.Gasket, muffler	
7	239064		1	.Air cleaner element, cpl	A
8	239065		1	.Recoil starter, cpl	D
9	239374		1	..Starter rope	B
10	239375		1	..Spring	B
11	239376		1	..Reel	
12	239377		2	..Spring	
13	239378		2	..Ratchet	
14	239379		1	..Friction spring	
15	239380		1	..Guide	
16	239381		1	..Screw	
17	239391		1	..Handle	B
18	239321		1	.Fuel tank	
19	239324		1	.Fuel tank cap	D
20	239682		2	.Plug	D
21	238303		2	.Gasket	D
22	935802		1	.Oil level plug	
23	239067		1	.Oil alert	
24			1	.Carburattor, cpl	
25	239565		1	.Spark plug	A
26	238301		1	.Gasket	D
27	238309		1	.Gasket, cylinder head	B
28		A	4	Washer	B
29		A	4	Screw	B

A) See section engine installation

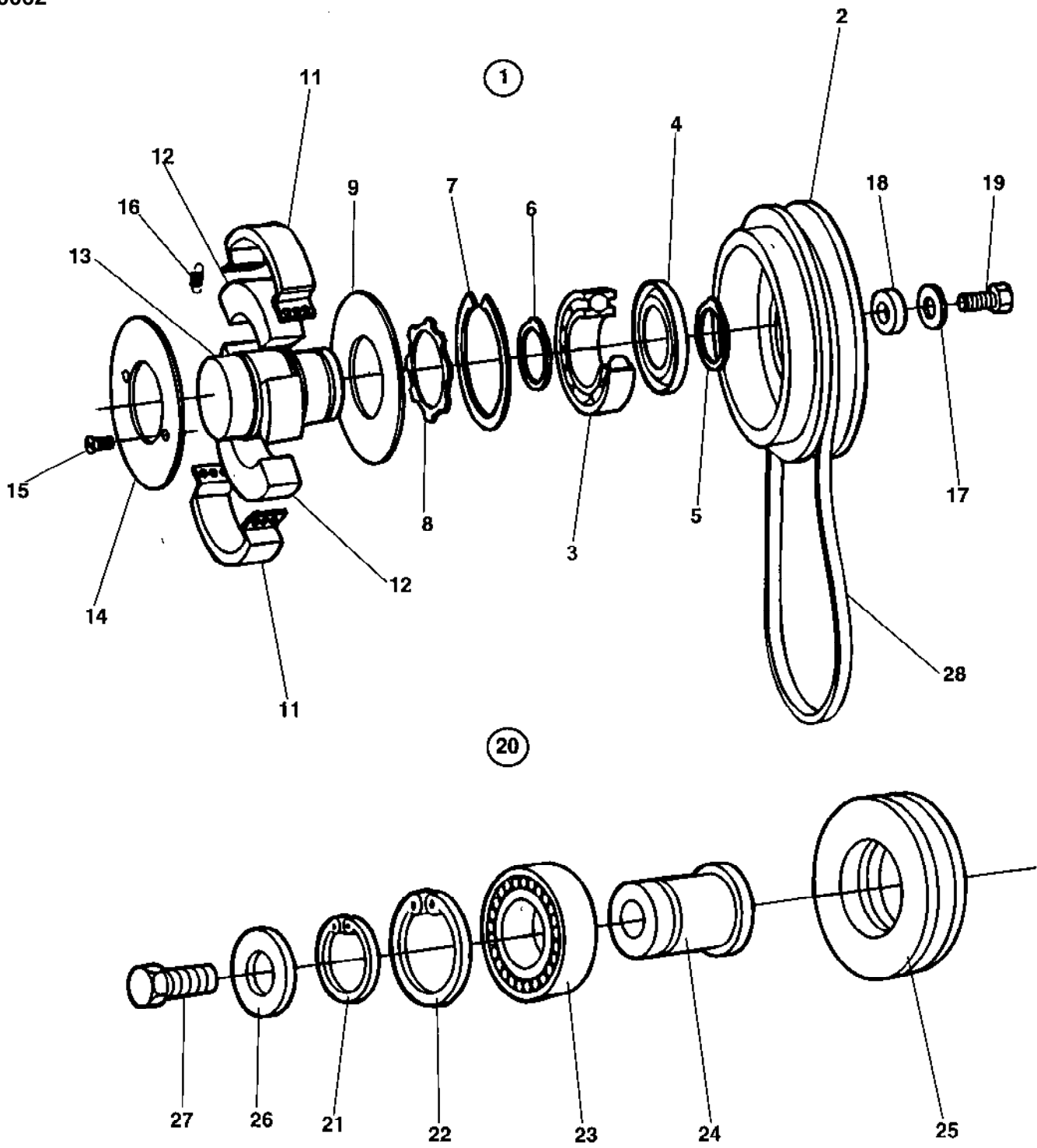


<b>Ref. No.</b>	<b>Part No.</b>	<b>Rem.</b>	<b>Qty</b>	<b>Description</b>	<b>Code</b>
1				Engine Honda GX200 ( Page 14 )	
2	387301		1	V-belt guard	
3	904229		6	Washer 8,4x16x1,5	
4	904556		2	Washer 8,4x16x3,0	
5	500019		4	Screw M8-1,25x16 8,8	
6	500023		4	Screw	
7	381057		1	Connector	
8	100901382		1	Hose	
9	281234		1	Ryw-clips	
10	508023		1	Screw	
11	904281		1	Washer 5,3x10x1	
12	586001		1	Lock nut M5	
13	100504609		1	Plug	
14	313001		2	Hose clamp	
15		A		Clutch, cpl	
16		A		Idler, cpl	
17		A		V-belt	

A) See section power transmission



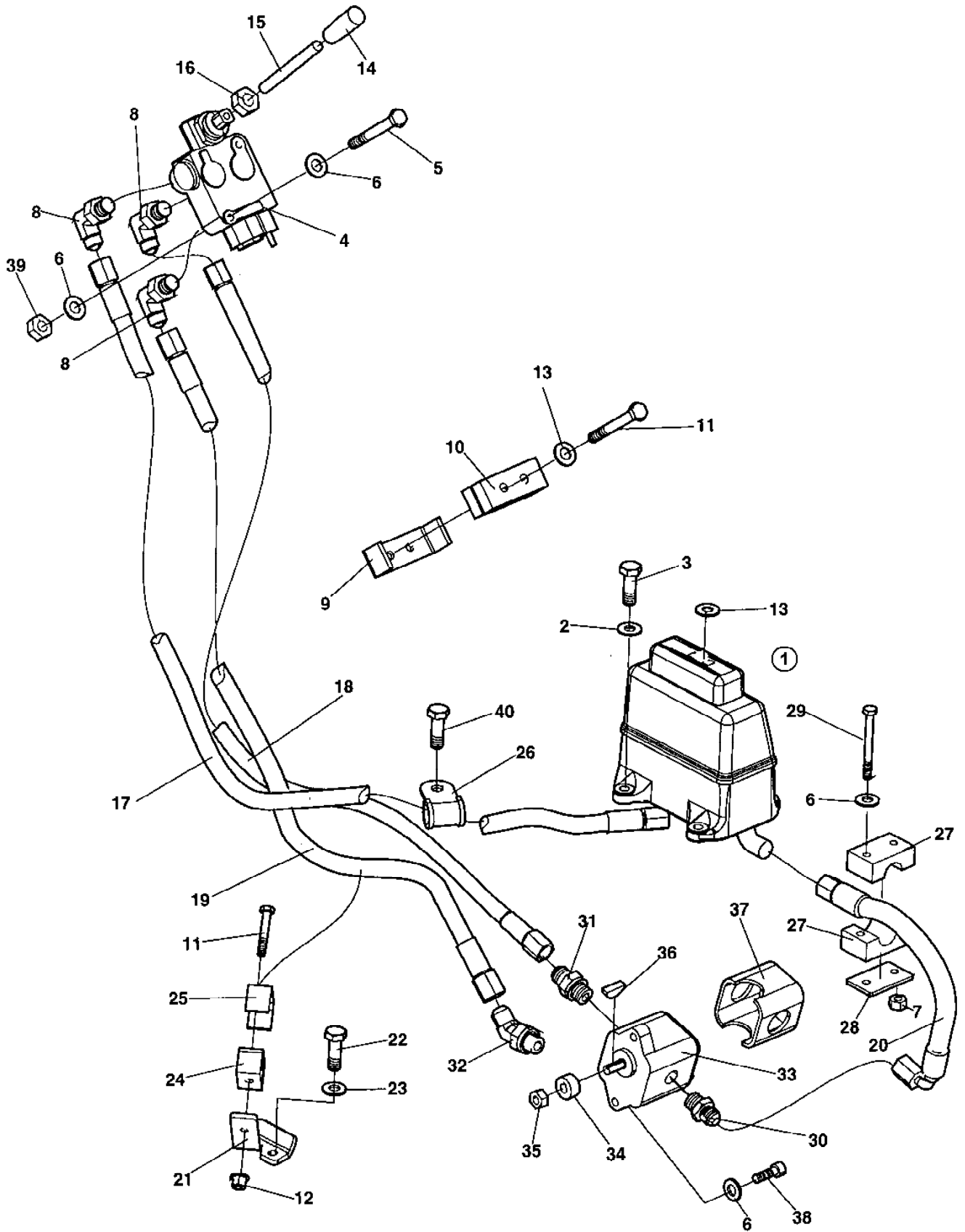
Ref. No.	Part No.	Rem.	Qty	Description	Code
10				Power transmission ( Page 20 )	



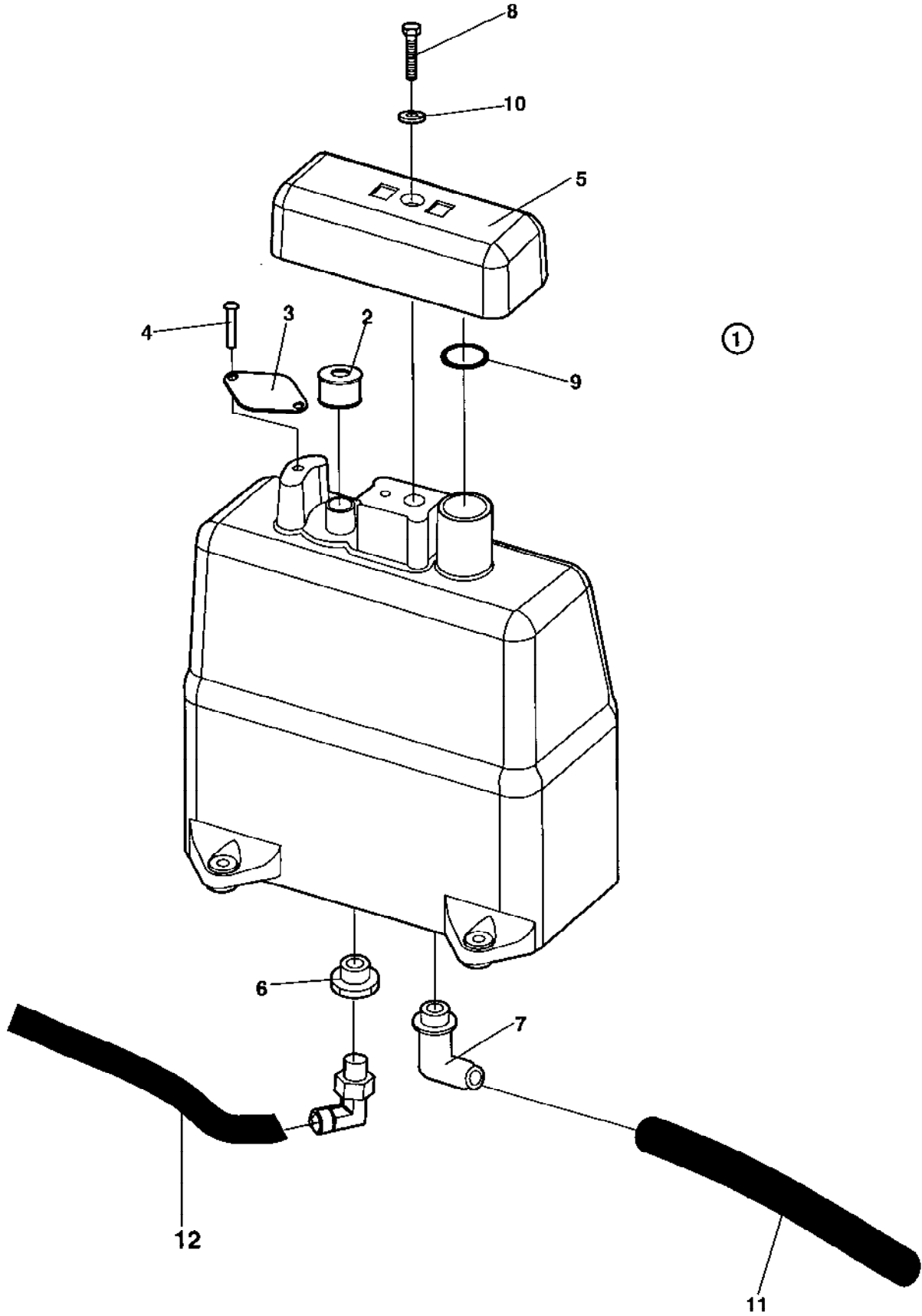
<b>Ref. No.</b>	<b>Part No.</b>	<b>Rem.</b>	<b>Qty</b>	<b>Description</b>	<b>Code</b>
1	281124		1	Centrifugal clutch, cpl	D
2	935803		1	.Pulley	
3	111180		1	.Ball bearing	D
4				Not used on this model	D
5	150012		1	.Snap ring	D
6				Not used on this model	D
7	151019		1	.Retaining ring	D
8	239734		1	.Retaining ring	
9	935808		1	.Cover	
10	935807		1	.Hub	
11	929360		2	.Clutch lining	B
12	239290		2	.Weight	D
13	935807		1	.Hub	
14	100901024		1	.Cover	
15	535002		2	.Screw	
16	929356		2	.Spring	B
17	904734		1	Washer 8,4x26x4	
18				Not used on this model	
19	500021		1	Screw M8-1,25x25 8,8	
20	280835		1	Idler, cpl	D
21	150009		1	.Snap ring	
22	151017		1	.Snap ring	
23	111114		1	.Ball bearing	
24	280837		1	.Shaft	
25	280836		1	.V-belt pulley	D
26	904213		1	Washer 13x30x4	
27	500046		1	Screw M12x30H 8,8 FZB	
28	281345		1	V-belt	B



Ref. No.	Part No.	Rem.	Qty	Description	Code
10				Hydraulic system ( Page 24 )	



Ref. No.	Part No.	Rem.	Qty	Description	Code
1			1	Hydraulic oil tank ( Page 26 )	
2	904230		4	Washer 10,5x22x2	
3	500029		4	Screw M10-1,5x30 8,8	
4	282993		1	Valve	
5	500079		2	Screw M6-1x50 8,8	
6	904228		8	Washer 6,4x12x1,5	
7	902285		2	Lock nut M6	
8	234481		3	Connector	
9	100505023		1	Bracket	
10	280534		2	Rubber block	
11	500025		5	Screw M8-1,25x50 8,8	
12	902286		1	Lock nut M8	
13	904229		5	Washer 8,4x16x1,5	
14	903821		1	Grab handle	
15	100505042		1	Rod	
16	570005		2	Nut M8	
17	483611		1	Hydraulic hose	
18	483612		1	Hydraulic hose	
19	483613		1	Hydraulic hose	
20	482328		1	Hydraulic hose	
21	387511		1	Bracket	
22	500053		1	Screw M8-1,25x20 8,8	
23	904556		1	Washer 8,4x16x3,0	
24	280537		1	Rubber block	
25	280538		1	Bracket	
26	921072		1	Clamp	
27	923876		1	Clamp	
28	923859		1	Cover plate	
29	500187		2	Screw	
30	791145		1	Straight adapter	
31	334463		1	Connector	
32	234992		1	Adapter	
33	383562		1	Hydraulic pump	
34	928894		1	Sleeve	
35	570004		1	Nut M6	
36	928789		1	Key	
37	280540		1	Cover	
38	508025		2	Screw	
39	586002		2	Lock nut M6	
40	500022		1	Screw M8-1,25x30 8,8	



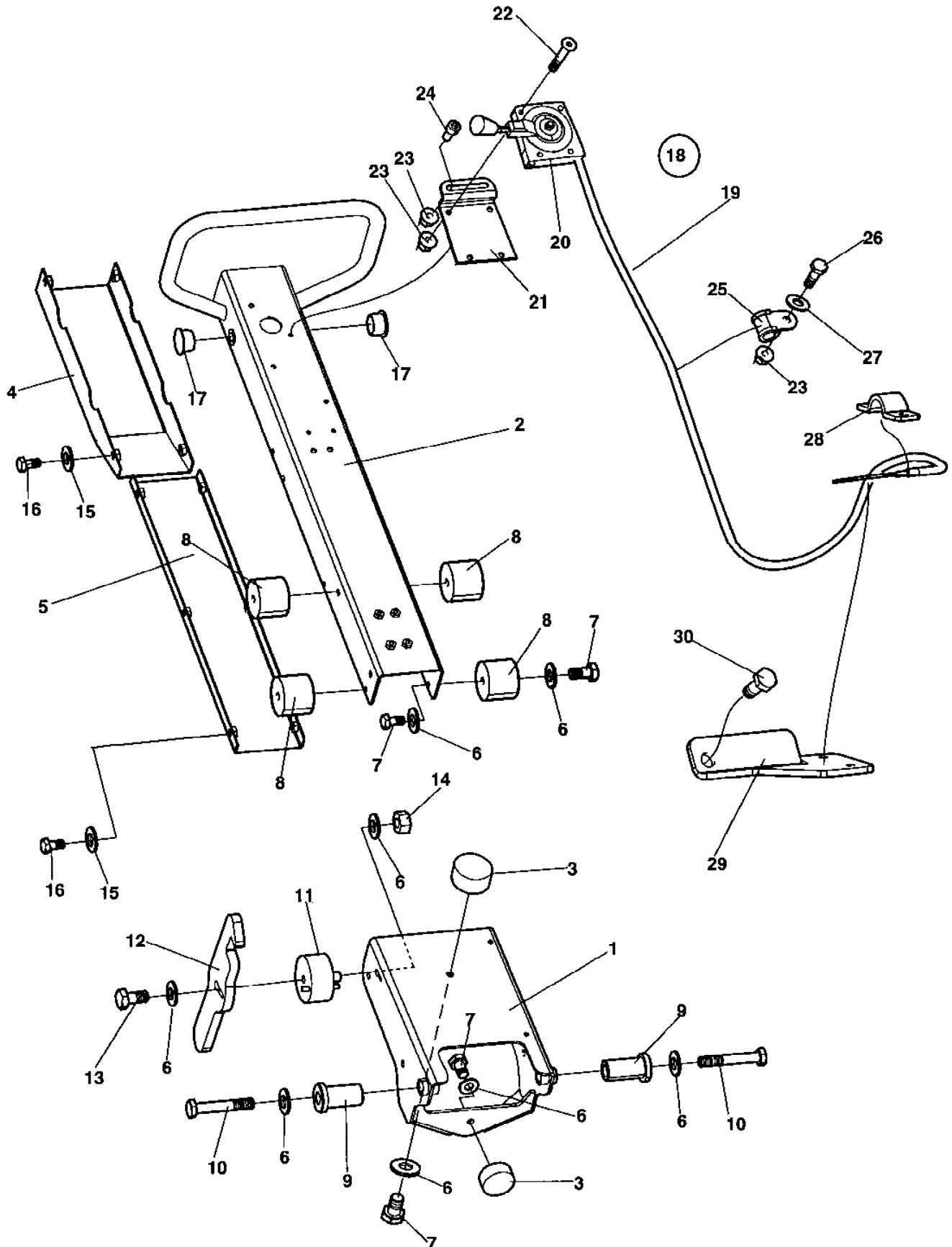
Ref. No.	Part No.	Rem.	Qty	Description	Code
1			1	Hydraulic oil tank, CPL	
2	381566		1	.Air filter	
3	381563		1	.Holder	
4	904960		2	.Screw	
5	381385		1	.Cover	
6	383039		1	.Reduction	
7	334238		1	.Adapter	
8	500021		1	.Screw M8-1,25x25 8,8	
9	160110		1	.O-ring	
10	234481		1	.Connector	
11		A		Hydraulic hose	
12		A		Hydraulic hose	

A) See section hydraulic system



**Handle and throttle control**

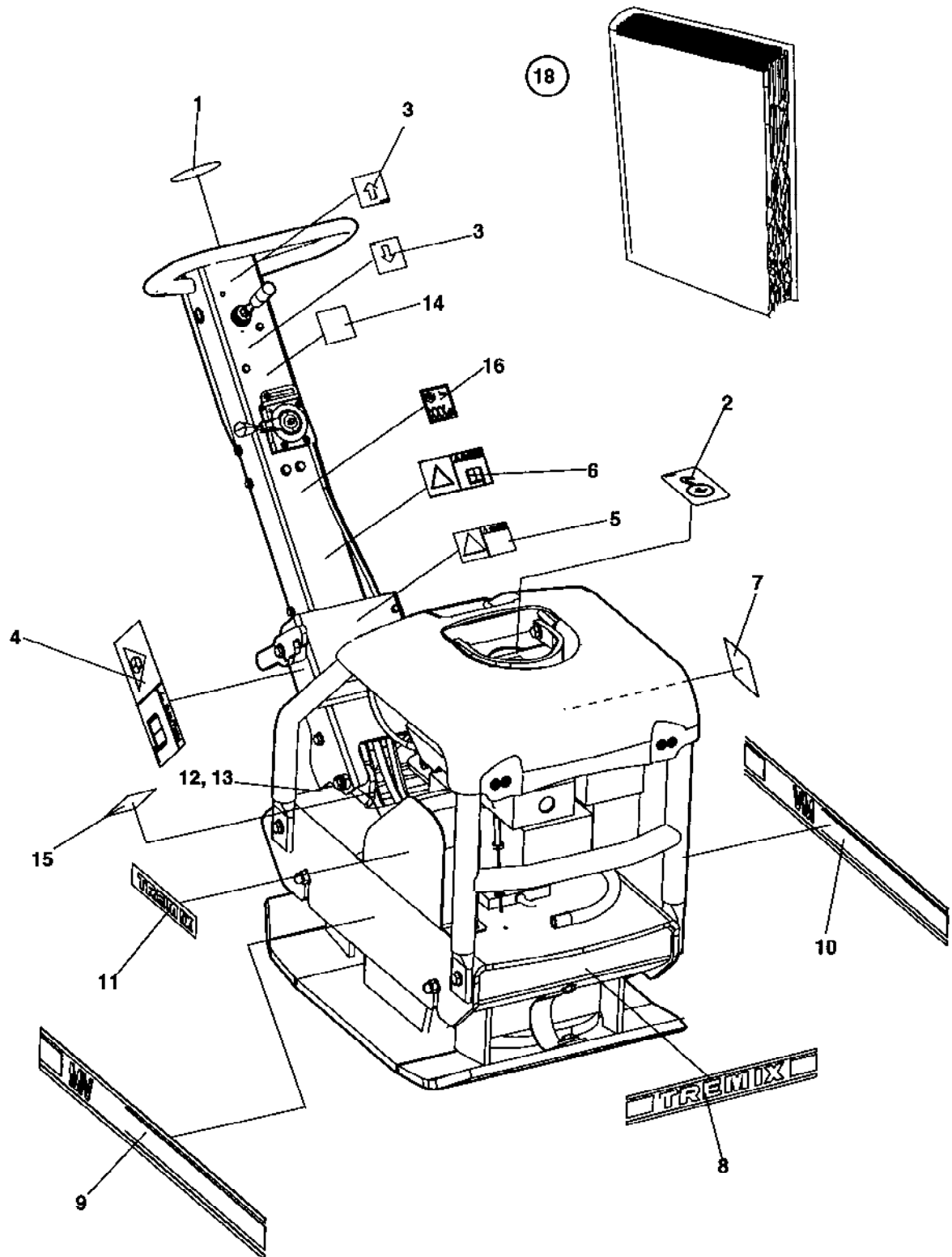
<b>Ref. No.</b>	<b>Part No.</b>	<b>Rem.</b>	<b>Qty</b>	<b>Description</b>	<b>Code</b>
10				Handle and throttle control ( Page 30 )	



<b>Ref. No.</b>	<b>Part No.</b>	<b>Rem.</b>	<b>Qty</b>	<b>Description</b>	<b>Code</b>
1	386988		1	Bracket	
2	282904		1	Handle	
3	791373		2	Shock absorber	
4	282901		1	Cover, upper	
5	282903		1	Cover, lower	
6	904230		14	Washer 10,5x22x2	
7	500043		10	Screw M10x16H 8,8	
8	100900827		4	Shock absorber	
9	100504729		2	Bushing	
10	500109		2	Screw M10-1,5x65 8,8	
11	385387		1	Shock absorber	
12	382496		1	Hook	
13	500048		1	Screw M10-1,5x20 8,8	
14	570006		1	Nut M10	
15	904229		10	Washer 8,4x16x1,5	
16	500019		10	Screw M8-1,25x16 8,8	
17	184111		2	Plug	
18	286454		1	Throttle control	
19	286447		1	Throttle cable	
20	455019		1	Throttle handle	
21	284365		1	Bracket	
22	924875		3	Screw M6x35	
23	902285		6	Lock nut M6	
24	508001		1	Screw	
25	791341		3	Clamp	
26	500040		2	Screw M6-1x20 8,8	
27	904228		2	Washer 6,4x12x1,5	
28	465013		1	Clamp	
29	105508509		1	Bracket	D
30	500013		1	Screw M6-1x16 8,8	



Ref. No.	Part No.	Rem.	Qty	Description	Code
10				Decals and documentation ( Page 34 )	



<b>Ref. No.</b>	<b>Part No.</b>	<b>Rem.</b>	<b>Qty</b>	<b>Description</b>	<b>Code</b>
1	281898		1	Decal, ear protection	
2	281269		1	Decal "LIFT"	
3	284278		2	Decal	
4	908229		1	Safety decal	
5	904785		1	Safety decal	
6	904680		1	Decal "Read instruction manual"	
7	272373		1	Decal "HYDRAULIC OIL"	
8	387752		1	Decal "TREMIX"	
9	388183		1	Decal "TREMIX"	
10	388184		1	Decal "TREMIX"	
11	387757		1	Decal "TREMIX"	
12			1	Sign plate	
13	527002		4	Drive screw	
14	284285		1	Decal	
15	903832		1	Safety decal	
16	791296		1	Decal "Sound power level"	
17	903424		1	Decal "HOT SURFACE"	
18			1	Documentation	
			1	Spare parts catalogue SMV215	
			1	Instructions IMV215	
			1	Warrenty registration certificate	
			1	Warrenty conditions	
			1	CE declaration	



## NUMERICAL INDEX

Part Number	Page	Part Number	Page	Part Number	Page
100504609	17	280835	21	508023	17
100504729	31	280836	21	508025	25
100505023	25	280837	21	508028	7
100505036	7	280850	11	508031	11
100505042	25	280858	11	508042	11
100900827	31	280871	11	527002	35
100901024	21	281124	21	535002	21
100901382	17	281234	17	570004	25
105508509	31	281269	35	570005	25
111114	21	281276	11	570006	31
111180	21	281345	21	570007	7
150002	11	281898	35	581013	7
150009	21	282901	31	586001	17
150012	21	282903	31	586002	25
150017	11	282904	31	586019	7
151007	11	282993	25	747541	7
151017	21	284237	7	791145	25
151019	21	284278	35	791296	35
151039	11	284285	35	791341	31
160110	27	284365	31	791373	31
162011	11	286447	31	791524	7
184111	31	286454	31	902285	7,25,31
232143	11	313001	17	902286	25
234481	25,27	334238	27	903363	11
234992	25	334463	25	903424	35
238301	15	350029	11	903821	25
238303	15	381057	17	903832	35
238309	15	381385	27	904213	11,21
239063	15	381563	27	904228	7,11,25
239064	15	381566	27		,31
239065	15	382496	31	904229	11,17
239067	15	383039	27		,25,31
239290	21	383562	25	904230	25,31
239321	15	385387	31	904231	7,11
239324	15	386986	7	904281	17
239374	15	386988	31	904556	17,25
239375	15	387113	7	904655	7
239376	15	387257	7	904680	35
239377	15	387259	7	904734	21
239378	15	387260	7	904742	7
239379	15	387261	7	904785	35
239380	15	387301	17	904798	7
239381	15	387511	25	904960	27
239391	15	387705	7	908229	35
239565	15	387752	35	921072	25
239682	15	387757	35	923859	25
239734	21	387979	15	923876	25
239889	15	388183	35	924543	7
239890	15	388184	35	924875	31
272373	35	455019	31	928241	11
280534	25	465013	31	928789	25
280537	25	482328	25	928794	11
280538	25	483611	25	928795	11
280540	25	483612	25	928893	11
280621	7	483613	25	928894	25
280630	11	500013	11,31	929286	11
280631	11	500019	17,31	929287	11
280637	11	500021	21,27	929291	11
280638	11	500022	11,25	929356	21
280639	11	500023	17	929360	21
280640	11	500025	25	929454	11
280642	11	500028	11	935802	15
280643	11	500029	25	935803	21
280644	11	500037	7	935807	21
280645	11	500040	7,11,31	935808	21
280646	11	500043	31		
280647	11	500046	21		
280648	11	500048	31		
280654	11	500049	7		
280659	11	500051	7		
280662	11	500053	11,25		
280663	11	500075	11		
280669	11	500079	25		
280670	11	500109	31		
280677	11	500187	25		
280750	7	508001	31		

