

BFP
Engine Kawasaki TG018D-CA51

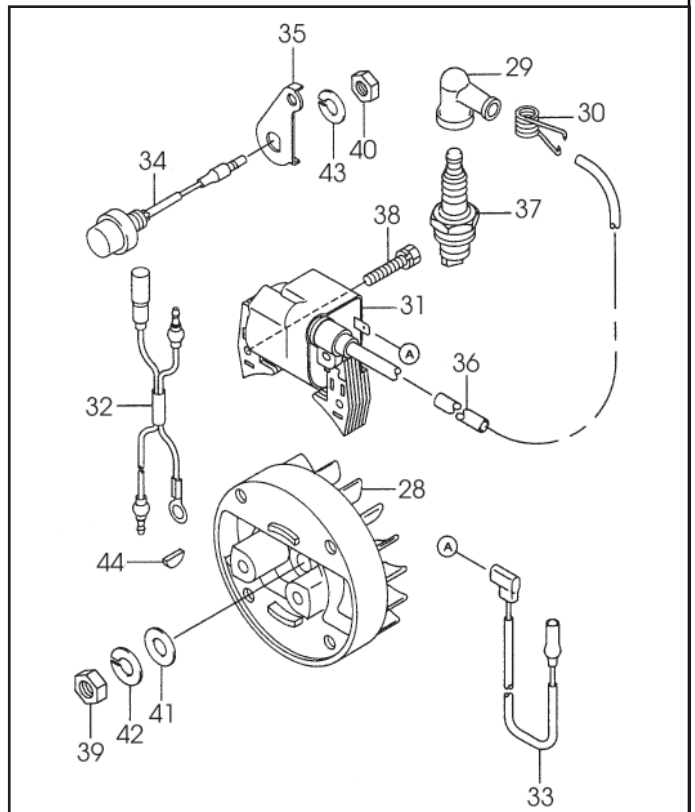
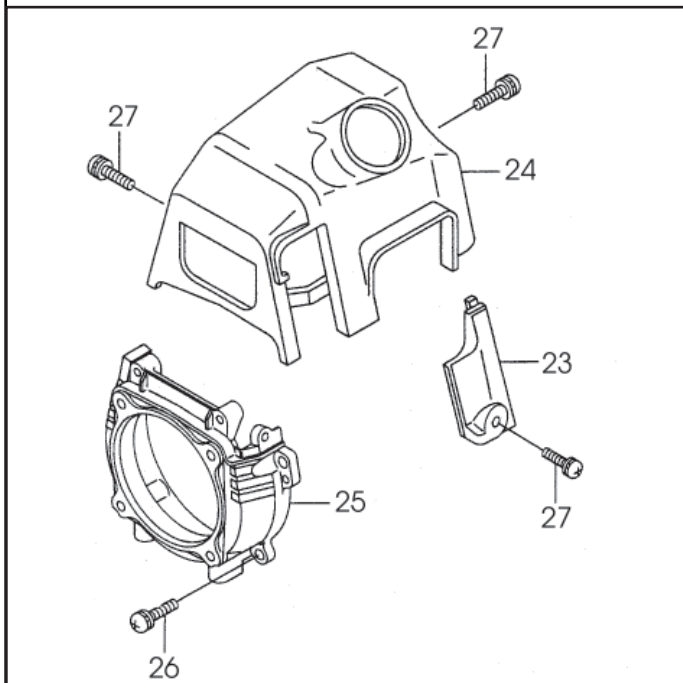
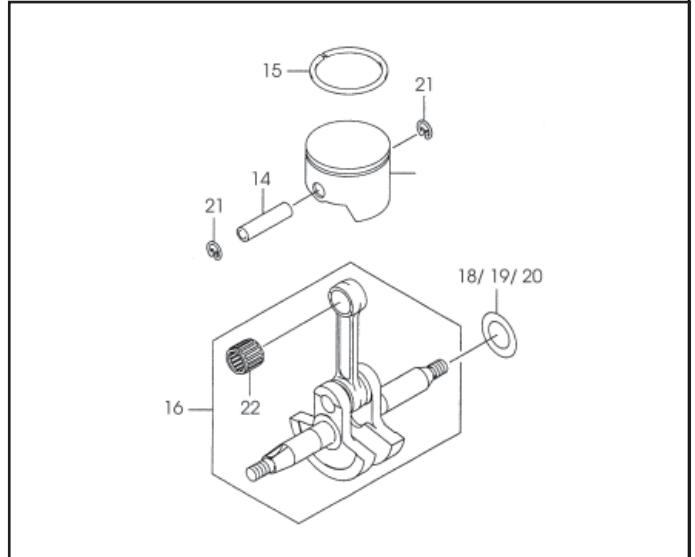
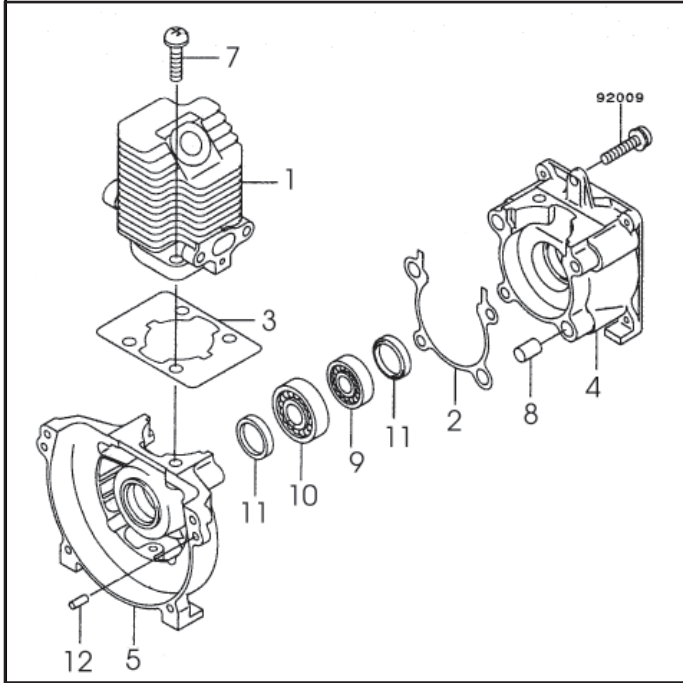


SPARE PART LIST

KAWASAKI

Date 0406

Pos	Qty	NO	Denomination	
1	1		CYLINDER	11005-2080
2	1		GASKET	11009-2274
3	1		GASKET, CYLINDER	11009-2732
4	1		CRANKCASE	14002-2185
5	1		CRANKCASE	14002-2199
6	4		SCREW	92009-2115
7	2		SCREW	92009-2143
8	2		PIN	92043-1302
9	1		BEARING-BALL, 6000C3	92045-2006
10	1		BEARING-BALL, 6000C3	92045-2056
11	2		SEAL-OIL	92049-2074
12	2		PIN.DOWEL	551A0410
13	1		PISTON-ENGINE	13001-2108
14	1		PIN-PISTON	13002-2072
15	1		RING-PISTON TOP	13003-2106
16	1		CRANKSHAFT-ASSY	49119-6052
17	AR		SHIM, T=0.10	92025-2124
18	AR		SHIM, T=0.20	92025-2125
19	AR		SHIM, T=0.40	92025-2126
20	AR		SHIM, T=0.60	92025-2127
21	2		RING-SNAP	92033-2060
22	1		BEARING-NEEDLE	13033-2003
23	1		COVER	14024-2103
24	1		SHROUD-ENGINE	49089-2432
25	1		HOUSING-FAN	59066-2395-9B
26	4		SCREW-PAN-WSP+-	234B0516
27	3		SCREW-PAN-WSP+-	242B0412
28	1		FLYWHEEL	21050-2255
29	1		CAP-SPARK PLUG	21130-2056
30	1		TERMINAL	21169-2051
31	1		COIL-ASSY-IGNITION	21771-2204
32	1		HARNESS	26001-2203
33	1		WIRE-LEAD,L=200	26011-2332
34	1		SWITCH	27010-2087
35	1		BRACKET SWITCH	32059-2056
36	1		TUBE	92059-2111
37	1		PLUG-SPARK, BMR6A(NGK)	92070-2060
38	2		BOLT-UPSET-WS	180B0524
39	1		NUT-HEX	311B0600
40	1		NUT-HEX	312B0800
41	1		W-PLAIN-S	410B0600
42	1		WASHER-SPRING	461F0600
43	1		WASHER-SPRING	461F0800
44	1		KEY-WOODRUFF	510A3100

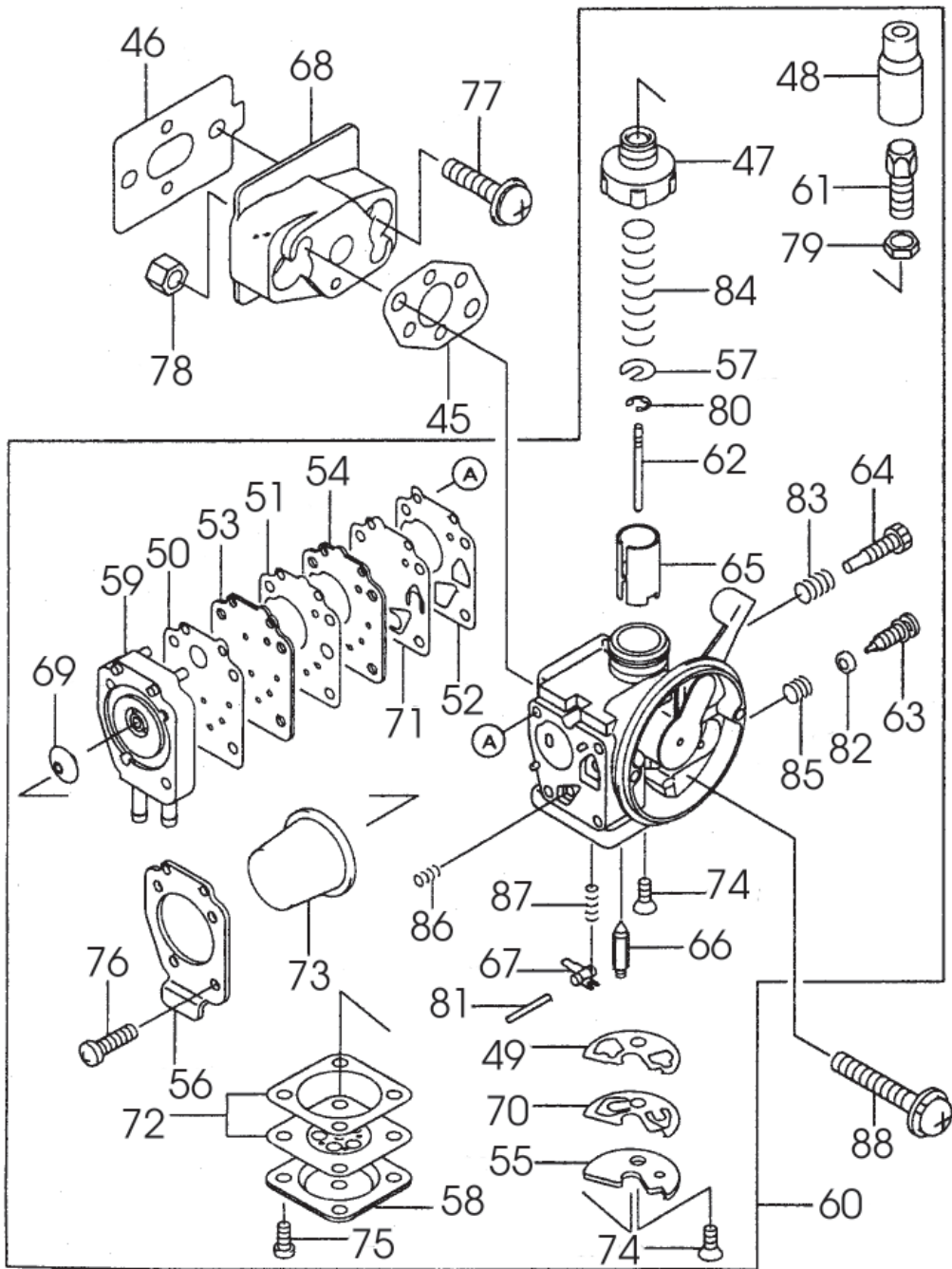


SPARE PART LIST

KAWASAKI

Date 0406

Pos	Qty	NO	Denomination	
45	1		GASKET, CARBURETOR	11009-2727
46	1		GASKET, INSULATOR	11009-2733
47	1		CAP, BODY	11012-2185
48	1		CAP, CARBURETOR	11012-2230
49	1		GASKET	11060-2307
50	1		GASKET	11060-2320
51	1		GASKET	11060-2321
52	1		GASKET	11060-2322
53	1		PLATE	13270-2035
54	1		PLATE	13270-2036
55	1		PLATE	13270-2042
56	1		PLATE	13270-2067
57	1		RETAINER, VALVE	14020-2009
58	1		COVER	14025-2027
59	1		COVER	14090-2066
60	1		CARBURETOR-ASSY	15003-2402
61	1		ADJUSTER-CABLE	16002-2004
62	1		NEEDLE-JET	16009-2146
63	1		SCREW-PILOTAIR	16014-2064
64	1		SCREW-THROTTLESTOP	16021-2008
65	1		VALVE-THROTTLE	16025-2180
66	1		VALVE-FLOAT	16030-2087
67	1		ARM-FLOAT	13168-2118
68	1		INSULATOR	16073-2179
69	1		VALVE-CHECK	16087-2059
70	1		VALVE-CHECK	16087-2060
71	1		DIAPHRAGM	43027-2084
72	1		DIAPHRAGM	43028-2085
73	1		PUMP-PRIMING	49043-2071
74	2		SCREW	92009-2053
75	4		SCREW	92009-2061
76	4		SCREW	92009-2068
77	2		SCREW 5x20	92009-2249
78	2		NUT, M5	92015-2097
79	1		NUT	92015-2124
80	1		PIN	92033-2070
81	1		RING-O	92043-2099
82	1		SPRING	92055-2067
83	1		SPRING, THROTTLE	92081-2245
84	1		SPRING	92081-2246
85	1		SPRING	92081-2249
86	2		SPRING	92081-2340
87	1		SPRING	92144-2009
88	2		SCREW-PAN-WSP+-	234B0543

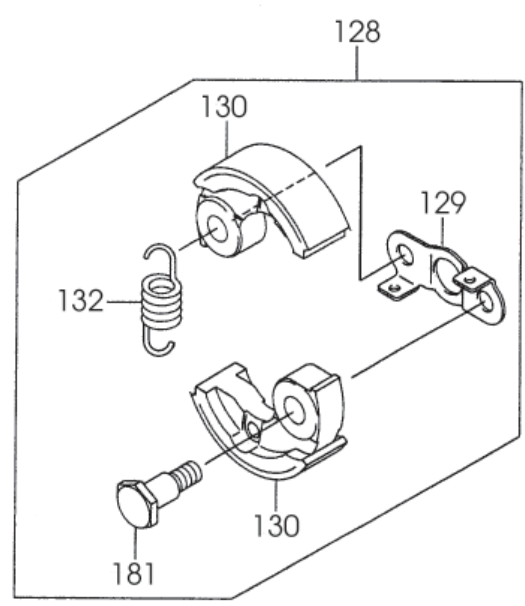
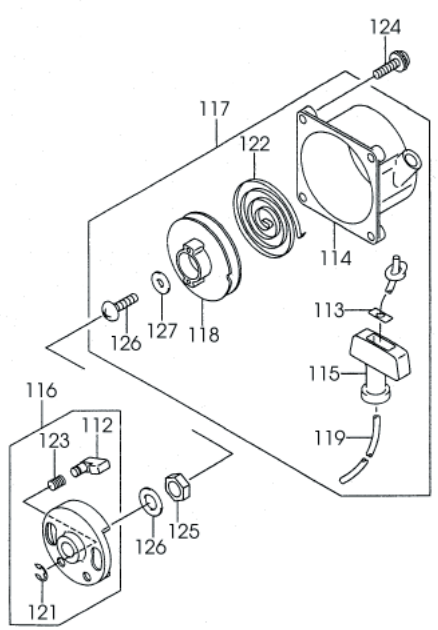
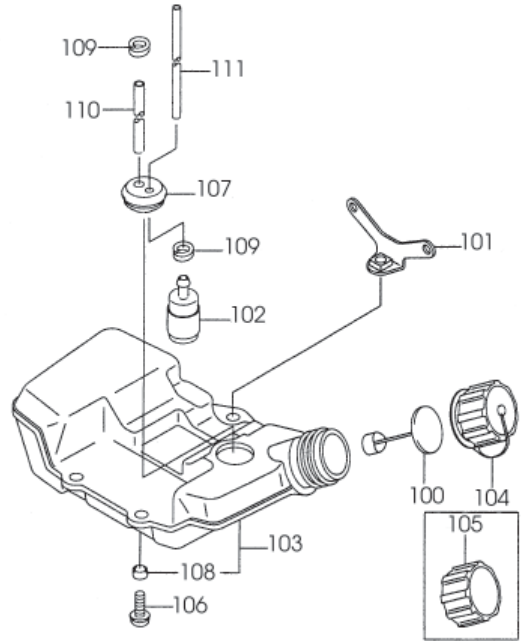
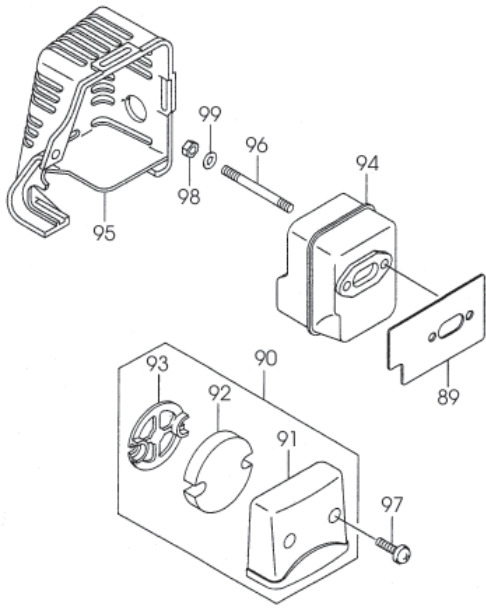


SPARE PART LIST

KAWASAKI

Date 0406

Pos	Qty	NO	Denomination	
89	1		GASKET, MUFFLER	11009-2750
90	1		FILTER-ASSY-AIR	11010-2189
91	1		CAP	11012-2073
92	1		ELEMENT-AIR FILTER	11013-2080
93	1		PLATE	13169-2310
94	1		MUFFLER-COMP	49070-2452-9X
95	1		COVER-MUFFLER	49106-2420
96	2		STUD	92004-2120
97	2		SCREW-PAN-WP+-	233B0416
98	2		NUT-HEX	311B0500
99	2		W-PLAIN-S	410B0500
100	1		BREATHER	14069-2056
101	1		BRACKET-TANK	32056-2176
102	1		FILTER-FUEL	49019-2111
103	1		TANK-COMP-FUEL	51001-2272
104	1		CAP-ASSY-TANK	51048-2066
105	1		CAP-TANK	51049-2057
106	3		SCREW, 5X14	92009-2319
107	1		GROMMET, FUEL TANK	92071-2142
108	3		COLLAR	92143-2163
109	2		CLAMP, FUEL FILTER	92170-2080
110	1		TUBE, 3X6X90	92190-2174
111	1		TUBE, 3X5X160	92190-2177
112	1		PAWL	13165-2052
113	1		PLATE, RECOIL STARTER	13169-2386
114	1		CASE, RECOIL STARTER	32099-2056
115	1		GRIP	46075-2056
116	1		PULLEY-STARTING	49080-2090
117	1		STARTER RECOIL	49088-2241
118	1		REEL	59101-2051
119	1		ROPE, 3X890	59106-2057
120	1		SCREW, 5X12	92009-2206
121	1		RING-SNAP	92033-2010
122	1		SPRING	92081-2238
123	1		SPRING	92081-2253
124	4		SCREW-PAN-WSP+-	234B0518
125	1		NUT-HEX	311B0600
126	1		W-PLAIN-S	410B0600
127	1		WASHER PLAIN	411B0500
128	1		CLUTCH-ASSY	13081-2204
129	1		PLATE	13270-2048
130	2		SHOE-CLUTCH	49049-2096
131	2		PIN	92043-2069
132	1		SPRING, CLUTCH	92144-2086



RESERVDELSBESTÄLLNING

För att undvika felleveranser vid reservdelsbeställning är det angeläget att produkttyp och tillverkningsnummer såväl som pos., antal, benämning och detaljnummer anges.

SPARE PARTS ORDERING

To prevent wrong deliveries, your orders should specify type of product, serial number as well as item No., quantity, denomination and part No.

ERSATZTEILBESTELLUNG

Um fehlerhafte Lieferungen bei Ersatzteilbestellung zu vermeiden, ist es wichtig, daß Typ und Herstellungsnummer sowie Position, Anzahl, Benennung und Teil-Nr. angegeben werden.

